

Today's Market Overview



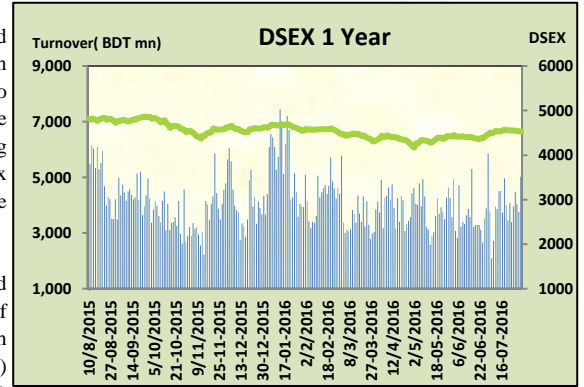
Sunday, July 31, 2016

DSEX	4,525.35	-0.28%	Issues Traded	↑ Advanced	↓ Declined	↔ Unchanged
Turnover (BDT mn)	5,029.53	33.91%		101	176	48

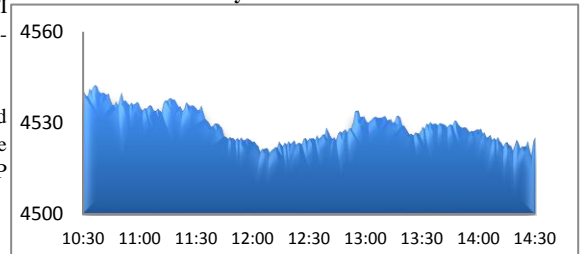
Market ended in red zone with a heavily improved turnover. The premier bourse of the nation opened with negative mood and continued the same mood till the closure. Some recovery stances found in midsession but late hour sale pressure faded it away. Almost all of the major and small sectors failed to click. Sellers seemed very proactive to avoid natural correction. Interestingly some major sectors like Bank, Engineering, Power & NBFI observed notable concentration which amplified confidence among the investors. Telecom, Power faced severity. other two indices DS30 & DSES the shariah based index both performed marginally poor. Jute was the best gainer followed by Paper & Bank. While IT was the worst loser followed by Telecom & Ceramics.

The general gauge DSEX ended at 4526 with a decline of -0.28% which cut 12.91 points from the broad DSEX. The Turnover advanced heavily by 33.91% which was 1274 Million BDT healthier than that of previous day and finally finished the mark at 5029.53 million BDT. A total of 101 issues advanced with 176 declined & 48 remained unchanged. Sectors that improved were: Bank (+0.66%) Food (+0.15%) Jute (+3.88%) Mutual Fund (+0.58%) Paper (+1.18%) & Sectors that declined were: Cement (-0.55%) Ceramics (-1.76%) Engineering (-0.56%) Insurance (-1.27%) IT (-2.33%) Miscellaneous (-0.39%) NBFI (-0.64%) Power (-0.81%) Pharmaceuticals (-0.41%) Service (-1.23%) Telecom (-1.60%) Textile (-0.58%).

ISLAMIBANK topped in the Volume chart with a turnover of 22.45 BDT crore. RUPALIBANK ranked top in gainer chart with a price hike of +10.0% and PRAGATILIF topped in the loser chart with a decline of -20.4 % from its prevailing price. ISLAMIBANK led the way in the index mover chart while GP played the shatter part.



Today's DSEX Scenario



Index Scenario

	INDEX	Change	% Changes
DSEX	4525.35	(12.91)	-0.28%
DSES	1109.10	(2.08)	-0.19%
DS30	1770.28	(1.23)	-0.07%

Market Highlights

DSEX 52 week H/L	4874/3960	Market P/E (LTM)	14.84
DSEX Week H/L	4555/4525	M.Cap	3228681.3

Group Performances

Category	Mkt Cap (mn.)	Δ % M.Cap	Turnover BDT (mn)	Δ % Turnover
Group A	2,454,882.16	-0.5%	3,344.10	-0.1%
Group B	10,739.55	-0.5%	99.30	78.6%
Group N	64,848.62	-4.4%	316.26	27.1%
Group Z	36,311.48	-1.0%	37.95	-6.1%

Turnover Scenario

Today's Turnover (mn.)	Change In BDT (mn.)	% Change
5029.53	1,274	33.91%

Top Ten Volume (in BDT. crore)

Stock	TT	YT	AT	% Δ in Turnover	TT/AT	CP	YP	% Δ P	Number of shares	Public Holding
ISLAMIBANK	22.45	13.64	12.90	64.6%	74.1%	32.5	31.4	3.5%	274,244,180.0	9%
MJLBD	13.54	8.62	8.41	57.1%	61.1%	103.8	103.1	0.7%	362,944,698.6	5%
BRACBANK	13.02	14.02	6.03	-7.1%	115.9%	63.8	61.5	3.7%	15,218,280.0	19%
BSRMLTD	12.47	14.46	12.53	-13.7%	-0.5%	160.8	163.5	-1.7%	341,775,000.0	13%
ACMELAB	11.90	11.09	16.18	7.4%	-26.4%	113	114.9	-1.7%	190,686,141.8	9%
NLTUBES	9.12	3.90	1.87	134.2%	388.7%	112	101.9	9.9%	276,739,950.1	61%
IPDC	8.42	3.28	4.25	156.9%	98.3%	29.3	28.4	3.2%	137,132,037.0	19%
SQURPHARMA	8.09	17.85	11.22	-54.7%	-27.9%	267.1	267.4	-0.1%	190,417,988.2	27%
DBH	7.74	7.57	9.77	2.2%	-20.8%	110.8	111.3	-0.4%	294,400,000.0	24%
HEIDELBCEM	7.47	3.23	2.89	131.2%	158.7%	550.2	537.4	2.4%	54,285,000.0	38%

TT= Today's Turnover in crore, YT= Yesterday's Turnover in Crore, AT= Average of Last 20 day's Turnover, CP= Current Price, YP= Yesterday's Price, % Δ P= percentage change in price

**Top Ten Gainer****Top Ten Loser**

Stock	CP	YP	AP	% Δ P	% Δ in P from AP	Stock	CP	YP	AP	% Δ P	% Δ in P from AP
RUPALIBANK	27.6	25.1	25.22	10.0%	9.4%	PRAGATILIF	78.90	99.10	127.31	-20.4%	-38.0%
NLTUBES	112	101.9	87.235	9.9%	28.4%	SUNLIFEINS	18.40	22.70	26.90	-18.9%	-31.6%
ZEALBANGLA	12.7	11.6	10.055	9.5%	26.3%	MODERNDYE	143.40	157.90	145.15	-9.2%	-1.2%
MONNOSTAF	539.8	496.4	433.94	8.7%	24.4%	EMERALDOIL	37.80	40.20	43.90	-6.0%	-13.9%
RAHIMTEXT	278.8	256.7	245.61	8.6%	13.5%	DOREENPWR	56.80	60.40	NM	-6.0%	NM
NORTHERN	25.1	271.3	234.24	-90.7%	-89.3%	PRIMEFIN	7.50	7.90	8.06	-5.1%	-6.9%
8THICB	84.7	78.4	69.425	8.0%	22.0%	DACCADYE	8.30	8.70	9.14	-4.6%	-9.2%
SAVAREFR	47.5	44.5	42.21	6.7%	12.5%	NFML	19.00	19.90	21.86	-4.5%	-13.1%
GEMINISEA	1105.6	1040.6	1057.175	6.2%	4.6%	JUTESPINN	57.10	59.80	53.42	-4.5%	6.9%
ATLASBANG	123.6	116.9	112.365	5.7%	10.0%	MIDASFIN	17.00	17.80	16.90	-4.5%	0.6%

AP= Average Price of last 20 day,% Δ in P from AP= percentage change in price from the 20-day average price

Industry /Sectors overview (Amounts in BDT. Crore)

Sector	Trade Volume		MKT Turnover %		% Δ in Turnover	Market Capitalization		% of Total MC		% Δ in MC
	Today	Yesterday	Today	Yesterday		Today	Yesterday	Today	Yesterday	
Bank	59.42	53.07	0.16	0.15	11.97%	41538.15	41265.96	16.21%	16.03%	0.66%
Cement	20.17	22.90	0.05	0.06	-11.92%	13980.83	14057.60	5.46%	5.46%	-0.55%
Ceramics	3.46	4.54	0.01	0.01	-23.84%	2333.97	2375.67	0.91%	0.92%	-1.76%
Engineering	69.46	55.13	0.18	0.15	25.98%	15320.12	15406.10	5.98%	5.98%	-0.56%
Food & Allied Product	13.27	15.79	0.03	0.04	-15.97%	23987.09	23950.54	9.36%	9.30%	-0.15%
Insurance	8.71	5.65	0.02	0.02	54.11%	6558.74	6643.31	2.56%	2.58%	-1.27%
IT	3.69	3.34	0.01	0.01	10.36%	886.46	907.58	0.35%	0.35%	-2.33%
Jute	2.77	3.04	0.01	0.01	-8.94%	99.57	95.86	0.04%	0.04%	3.88%
Miscellaneous	20.53	19.66	0.05	0.05	4.41%	8433.80	8466.53	3.29%	3.29%	-0.39%
Mutual Fund	5.85	3.72	0.02	0.01	57.40%	3980.93	3957.88	1.55%	1.54%	-0.58%
NBFI	26.91	20.28	0.07	0.06	32.65%	7905.51	7956.76	3.08%	3.09%	-0.64%
Paper & Printing	2.23	1.49	0.01	0.00	49.15%	168.40	166.44	0.07%	0.06%	-1.18%
Pharmaceuticals & Chemicals	47.44	54.90	0.12	0.15	-13.57%	44151.23	44333.49	17.23%	17.22%	-0.41%
Power & Energy	57.98	52.80	0.15	0.14	9.82%	34877.72	35163.72	13.61%	13.66%	-0.81%
Service & Real Estate	2.97	4.40	0.01	0.01	-32.45%	1506.80	1525.61	0.59%	0.59%	-1.23%
Tannery	2.41	3.57	0.01	0.01	-32.55%	2295.22	2296.13	0.90%	0.89%	-0.04%
Telecommunication	8.46	14.63	0.02	0.04	-42.19%	39113.17	39751.11	15.26%	15.44%	-1.60%
Textile	24.23	22.50	0.06	0.06	7.72%	7288.57	7330.91	2.84%	2.85%	-0.58%
Travel & Leisure	3.09	2.87	0.01	0.01	7.47%	1832.52	1857.47	0.72%	0.72%	-1.34%

MC= Market Capitalization, % Δ in Turnover= change in turnover from last day, % Δ in MC= change in Market cap from last day

Index Movers**Index Shakers****Sector wise P/E (Fd.)**

ISLAMIBANK	GP	Bank	9.30	NBFI	16.91
BRACBANK	LAFSURCEML	Cement	31.17	Paper & Printing	142.15
OLYMPIC	UPGDCL	Ceramics	38.79	Pharmaceuticals & Chemicals	25.96
HEIDELBCEM	SPCL	Engineering	34.44	Power & Energy	16.89
RUPALIBANK	BATBC	Food & Allied Product	26.88	Service & Real Estate	23.38
TRUSTBANK	EBL	Insurance	10.83	Tannery	38.96
LINDEBD	BSRMLTD	IT	41.18	Telecommunication	24.42
NLTUBES	PRIMEBANK	Jute	562.66	Textile	16.82
UTTARAFIN	RENATA	Miscellaneous	17.23	Travel & Leisure	19.64
MERCANBANK	RAKCERAMIC				

Important News

Company News:

PRAGATILIF: Category Change: The Company will be placed in 'Z' category from existing 'A' category with effect from August 01, 2016 as the Company did not recommend any dividend for year ended on December 31, 2015.

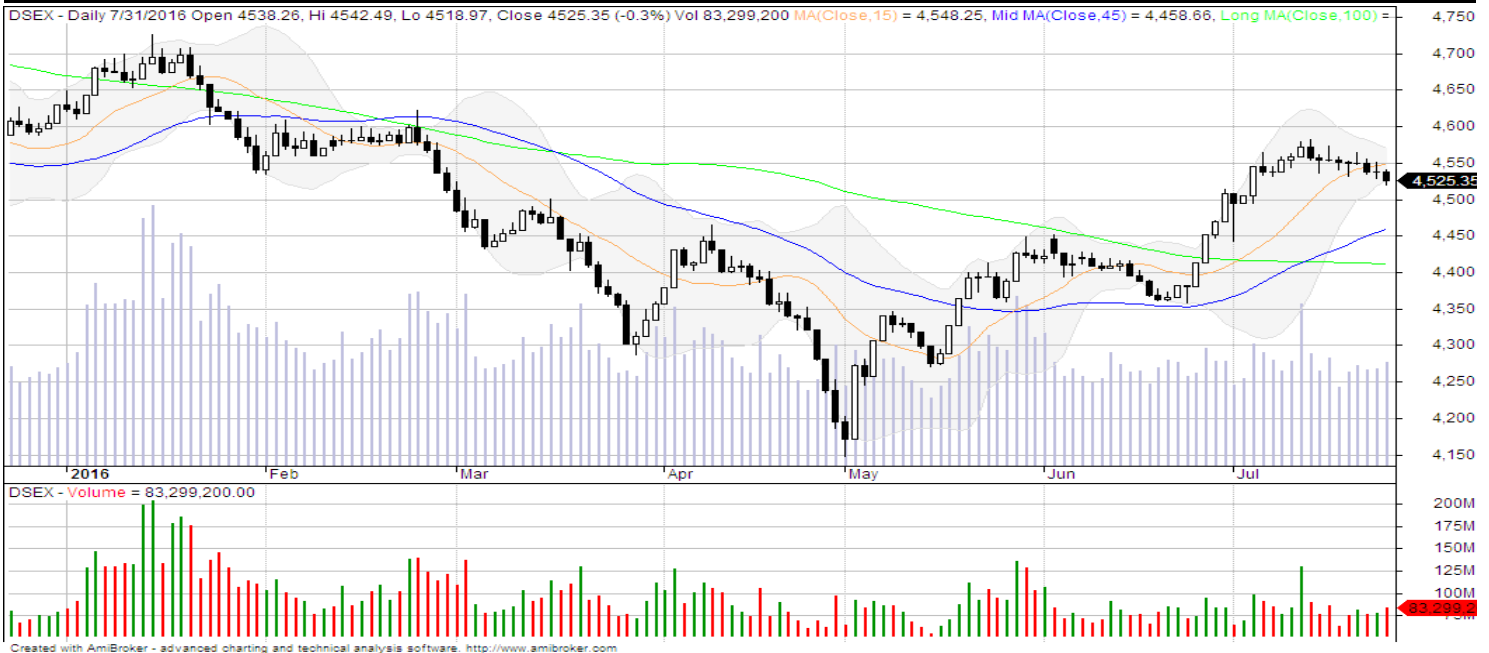
SUNLIFEINS: Category Change: The Company will be placed in 'Z' category from existing 'B' category with effect from August 01, 2016 as the Company did not recommend any dividend for year ended on December 31, 2015.

Recent Dividend Declaration

Ticker	Dividend	Record Date
Prime Islami Life Insurance Ltd	20% C & 5% B	8/8/2016
Grameenphone Limited	85% (interim cash)	08.08.2016
Sandhani Life Insurance Co. Limited	25% B	14.08.2016
Fareast Islami Life Insurance Co. Limited	39% C	07.08.2016

Note: C= cash Dividend, B= Bonus Dividend, R=Right, N/A=NotApplicable

DSEX Technical Graph for last one year



MTB CAPITAL LIMITED

Corporate head office

Level: 3, MTB Tower, 111, Kazi Nazrul Islam Avenue, Dhaka

Phone: 8321714, Fax: 8321543

www.mtbcap.com

A Mutual Trust Bank Company

you can invest with us

Disclaimer

This report has been prepared by the MTB Capital Limited (MTBCL) on the basis of available information in the market and it is provided for the purposes only. It is not to be used as an offer for buying or selling any instruments. If anyone takes any action relying on this information, shall be responsible solely by him/her self for any consequences. The best care has been taken to make the report informative. MTBCL doesn't give any warrant or guarantee that the report or such information is fully accurate. The information that are provided here is the exclusive property of MTBCL and can not be distributed without prior consent of MTBCL.