

Today's Market Overview

Wednesday, September 30, 2015

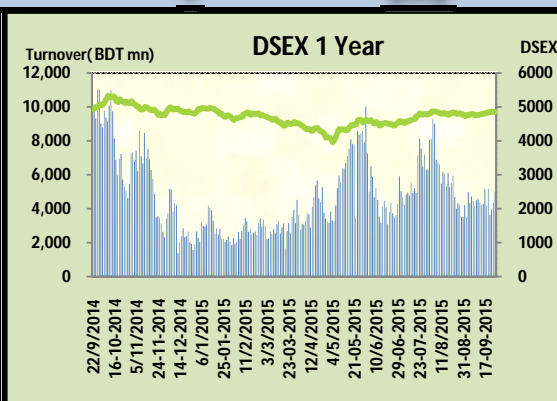


DSEX	4,852.08	-0.02%	Issues Traded	↑ Advanced 125	↓ Declined 151	↔ Unchanged 44
Turnover (BDT mn)	4,953.49	13.9%				

Market observed a flat movement with improved turnover as investors returned to the regular bourse. The whole session investors were in indecisive mood and played a see-saw. Buoyancy tried to pull it up for several times but sale side marginally dominated as quarter ending on mind. The premier bourse of the nation opened with a positive mood but failed to sustain for half an hour, after the midsession buyer & seller both lost their strength and settled it in negative flat end. Other two indexes DS30 & DSES the shariah based index both ill performed today. Most of the major sectors performed poor but Bank, NBFi & Service put a good show.

The general gauge DSEX ended at 4852.08 with a decline of -0.02% which cut -1.09 points from the broad DSEX. The Turnover advanced by +13.9% which was only 605 Million BDT healthier than that of previous day and finally finished the mark at 4953.49 million BDT. A total of 125 issues advanced with 151 declined and 44 remained unchanged. Sectors that improved were: Bank (+0.9%) NBFi (+0.4%) Engineering (+0.2%) Service (+1.4%) & sectors that declined were: Ceramics (-2.1%) Cement (-0.7%) Pharmaceuticals (-0.2%) Telecom (-2.2%) Power (-0.6%) Textile (-0.4%).

GP topped in the Volume chart with a turnover of 23.85 BDT crore. GSPFINANCE ranked top gainer chart with a price hike of +5.9% and BSCCL topped in the loser chart with a decline of -7.1% from its prevailing price. MARICO led the way in the index mover chart while GP played the shatter part.



Index Scenario				Market Highlights				
	INDEX	Change	% Changes	DSEX 52 week H/L	5334/3960	Market P/E (LTM)	15.91	
	DSEX	4852.08	(1.09)	0.0%	DSEX Week H/L	4867/4841	M.Cap (mn)	3355500.8
	DSES	1180.89	(5.18)	-0.4%	Group Performances			
	DS30	1847.97	(6.06)	-0.3%				
Turnover Scenario				Category	Mkt Cap (mn.)	Δ % M.Cap	Turnover BDT (mn)	Δ % Turnover
Today's Turnover (mn.)	Change In BDT (mn.)	% Change		Group A	2,626,551.75	-0.4%	4,387.10	10.8%
4953.49	605	13.9%		Group B	14,569.00	0.1%	100.02	10.3%
				Group N	30,228.23	-0.1%	215.07	17.3%
				Group Z	25,358.20	-0.6%	45.77	58.2%

Top Ten Volume (in BDT. crore)										
Stock	TT	YT	AT	% Δ in Turnover	TT/AT	CP	YP	% Δ P	Number of shares	Public Holding
GP	23.85	10.33	8.16	130.9%	192.5%	285.1	290.8	-2.0%	1,350,300,022.0	4%
SAIFPOWER	23.19	11.55	6.68	100.8%	247.0%	91.1	87.6	4.0%	70,985,380.0	19%
SQURPHARMA	20.39	14.57	13.11	39.9%	55.5%	249.4	250.6	-0.5%	623,586,546.0	9%
ISLAMIBANK	16.71	12.55	9.61	33.2%	73.8%	30.6	30.7	-0.3%	1,609,990,668.0	21%
FARCHEM	14.33	28.51	8.52	-49.7%	68.2%	50.5	52.3	-3.4%	109,237,878.0	12%
BSRMSTEEL	13.07	10.58	7.60	23.6%	72.0%	95.8	93.9	2.0%	341,775,000.0	13%
APOLOISPAT	12.21	9.65	5.69	26.6%	114.8%	23.3	22.9	1.7%	287,500,000.0	36%
BXPHERMA	10.70	9.17	9.94	16.7%	7.7%	71.5	71.4	0.1%	386,244,234.6	50%
IDLC	9.57	9.76	4.95	-1.9%	93.3%	64.5	64.3	0.3%	251,367,187.5	22%
LANKABAFIN	9.04	5.59	4.07	61.6%	122.3%	35	34.3	2.0%	240,643,434.9	61%

TT= Today's Turnover in crore, YT= Yesterday's Turnover in Crore, AT= Average of Last 20 day's Turnover, CP= Current Price, YP= Yesterday's Price, % Δ P= percentage change in price

Top Ten Gainer						Top Ten Loser					
Stock	CP	YP	AP	% Δ P	% Δ in P from AP	Stock	CP	YP	AP	% Δ P	% Δ in P from AP
GSPFINANCE	14.4	13.6	13.31	5.9%	8.2%	BSCCL	113.50	122.20	120.31	-7.1%	-5.7%
LRGLOBMF1	5.5	5.2	5.17	5.8%	6.4%	DBH	99.60	107.10	97.36	-7.0%	2.3%
PENINSULA	20.7	19.7	19.675	5.1%	5.2%	EBLNRBMF	4.20	4.40	4.34	-4.5%	-3.2%
BDFINANCE	12.5	11.9	10.98	5.0%	13.8%	JUTESPINN	55.70	58.30	64.28	-4.5%	-13.3%
PRIMEFIN	13.2	12.6	12.415	4.8%	6.3%	ZAHINTEX	22.00	22.90	22.06	-3.9%	-0.3%
BDAUTOCA	39	37.3	38.045	4.6%	2.5%	PRIMELIFE	43.30	45.00	42.35	-3.8%	2.2%
DBH1STMF	4.6	4.4	4.525	4.5%	1.7%	NORTHERN	319.90	332.10	330.35	-3.7%	-3.2%
ISNLTD	11.8	11.3	11.045	4.4%	6.8%	BEACHHATCI	16.70	17.30	20.46	-3.5%	-18.4%
PHOENIXFIN	19.2	18.4	17.7	4.3%	8.5%	FUWANGCER	14.00	14.50	14.07	-3.4%	-0.5%
NCCBLMF1	5.1	4.9	4.85	4.1%	5.2%	FARCHEM	50.50	52.30	51.95	-3.4%	-2.8%

AP= Average Price of last 20 day,% Δ in P from AP= percentage change in price from the 20-day average price

Industry /Sectors overview (Amounts in BDT. Crore)											
Sector	Trade Volume		MKT Turnover %		% Δ in Turnover	Market Capitalization		% of Total MC		% Δ in MC	
	Today	Yesterday	Today	Yesterday		Today	Yesterday	Today	Yesterday		
Bank	56.36	37.30	0.12	0.09	51.1%	41113.07	40727.67	15.27%	15.07%	0.9%	
Cement	14.51	13.80	0.03	0.03	5.1%	19031.92	19163.08	7.07%	7.09%	-0.7%	
Ceramics	8.27	7.90	0.02	0.02	4.7%	2792.10	2851.17	1.04%	1.06%	-2.1%	
Engineering	72.27	63.67	0.15	0.15	13.5%	15562.81	15533.02	5.78%	5.75%	0.2%	
Food & Allied Product	13.60	16.78	0.03	0.04	-18.9%	24357.67	24359.88	9.05%	9.02%	0.0%	
Insurance	5.83	5.39	0.01	0.01	8.0%	7272.08	7270.19	2.70%	2.69%	0.0%	
IT	2.09	1.81	0.00	0.00	16.0%	551.53	550.75	0.20%	0.20%	0.1%	
Jute	0.45	0.60	0.00	0.00	-24.8%	100.31	103.28	0.04%	0.04%	-2.9%	
Miscellaneous	21.01	28.47	0.04	0.07	-26.2%	8967.49	8989.94	3.33%	3.33%	-0.2%	
Mutual Fund	9.58	7.30	0.02	0.02	31.3%	3489.87	3466.15	1.30%	1.28%	0.7%	
NBFI	45.16	31.22	0.10	0.07	44.6%	8781.04	8742.98	3.26%	3.24%	0.4%	
Paper & Printing	0.94	1.08	0.00	0.00	-12.8%	225.04	228.62	0.08%	0.08%	-1.6%	
Pharmaceuticals & Chemicals	73.65	95.14	0.16	0.22	-22.6%	42105.59	42172.02	15.64%	15.61%	-0.2%	
Power & Energy	49.71	46.45	0.10	0.11	7.0%	39091.38	39318.14	14.52%	14.55%	-0.6%	
Service & Real Estate	34.07	23.00	0.07	0.05	48.1%	2155.66	2126.59	0.80%	0.79%	1.4%	
Tannery	3.58	3.85	0.01	0.01	-6.9%	2563.43	2586.44	0.95%	0.96%	-0.9%	
Telecommunication	28.33	10.33	0.06	0.02	174.2%	40198.58	41098.67	14.93%	15.21%	-2.2%	
Textile	23.79	22.60	0.05	0.05	5.2%	8531.44	8566.88	3.17%	3.17%	-0.4%	
Travel & Leisure	10.57	7.94	0.02	0.02	33.2%	2352.80	2353.63	0.87%	0.87%	0.0%	

MC= Market Capitalization, % Δ in Turnover= change in turnover from last day, % Δ in MC= change in Market cap from last day

Index Movers	Index Shakers	Sector wise P/E			
MARICO	GP	Bank	8.89	NBFI	35.41
BSRMSTEEL	BSCCL	Cement	37.60	Paper & Printing	79.62
PRIMEBANK	DBH	Ceramics	39.58	Pharmaceuticals & Chemicals	27.97
EBL	LAFSURCEML	Engineering	38.58	Power & Energy	16.73
BRACBANK	SQURPHARMA	Food & Allied Product	35.17	Service & Real Estate	45.46
BANKASIA	UPGDCL	Insurance	14.66	Tannery	34.42
DUTCHBANGL	RAKCERAMIC	IT	17.68	Telecommunication	25.05
POWERGRID	TITASGAS	Jute	168.14	Textile	17.55
CITYBANK	MICEMENT	Miscellaneous	35.19	Travel & Leisure	15.19
SAIFPOWER	BEXIMCO				

Important News

Company News:

DBH: Dividend Declaration The Board of Directors has recommended 30% cash dividend for the year ended on June 30, 2015. Date of AGM: 08.12.2015, Time: 11:00 AM, Venue: Hotel Amari Dhaka, House - 47, Road - 41, Gulsan - 2, Dhaka - 1212. Record date: 20.10.2015. The Company has also reported EPS of Tk. 5.90, NAV per share of Tk. 27.32 and NOCFPS of Tk. (0.98) for the year ended on June 30, 2015 as against Tk. 5.15, Tk. 23.92 and Tk. (3.82) respectively for the year ended on June 30, 2014.

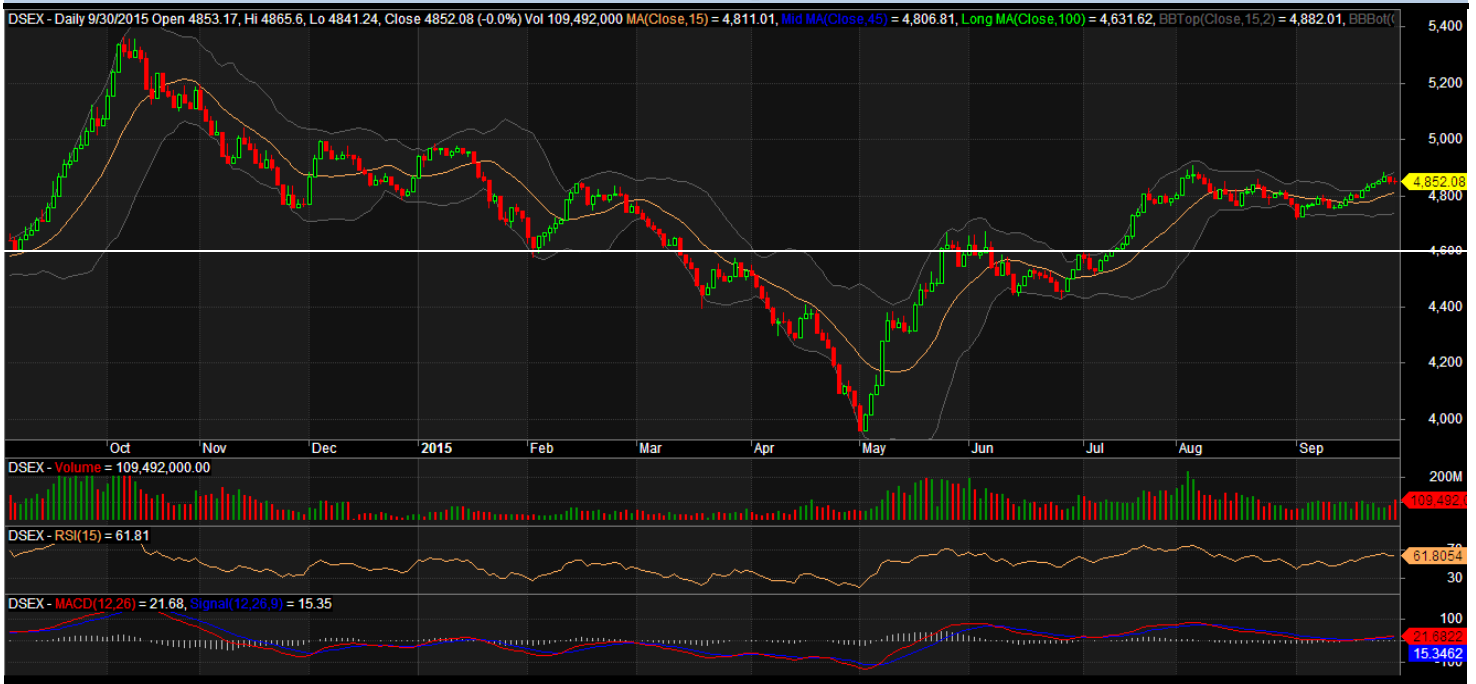
Recent Dividend Declaration

Ticker	Dividend	Record Date
--------	----------	-------------

Matin Spinning Mills Ltd.	27% C	08.10.15
---------------------------	-------	----------

Note: C= cash Dividend, B= Bonus Dividend, R=Right, N/A=NotApplicable

DSEX Technical Graph for last one year



MTB CAPITAL LIMITED

Corporate head office

Level: 3, MTB Tower, 111, Kazi Nazrul Islam Avenue, Dhaka

Phone: 8321714, Fax: 8321543

www.mtbcap.com

A mutual Trust Bank Company

you can invest with US

Disclaimer

This report has been prepared by the MTB Capital Limited (MTBCL) on the basis of available information in the market and it is provided for the purposes only. It is not to be used as an offer for buying or selling any instruments. If anyone takes any action relying on this information, shall be responsible solely by him/her self for any consequences. The best care has been taken to make the report informative. MTBCL doesn't give any warrant or guarantee that the report or such information is fully accurate. The information that are provided here is the exclusive property of MTBCL and can not be distributed without prior consent of MTBCL.