

Today's Market Overview



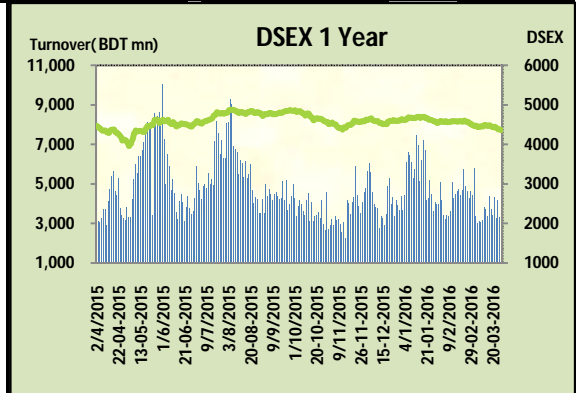
Sunday, March 27, 2016

| | | | | | | |
|--------------------------|----------|----------------|----------------------|--------------------------|--------------------------|--------------------------|
| DSEX | 4,355.94 | -0.33% | Issues Traded | ↑ Advanced 106 | ↓ Declined 165 | ↔ Unchanged 48 |
| Turnover (BDT mn) | 2,781.10 | -15.65% | | | | |

Market frustrated investors for the consecutive four trading sessions with a very apathetic turnover. Turnover hit the lowest from the last December and couldn't break 3 billion mark which horrified investors and created a rational turbulence. The premier bourse of the nation opened with negative mood and continued the same mood till the closure. DSEX tried to stay on previous support level throughout the session but indolence in big cap stocks didn't allow it to flourish upward. Some of the big cap stocks like Bank, Telecom & NBFI faced severity while among the prominent sectors Food & Pharmaceuticals tried to commiserate. Most of the small cap stocks performed marginally well. Investors suffered from confidence and feared for further fall which led to offload their holdings moreover sideliners weren't interested to join the market. Other two indices DS30 & DSES the shariah based index both performed poor. Service was the best gainer followed by Food & Jute While NBFI was the worst loser followed by Telecom & Bank.

The general gauge DSEX ended at 4355.95 with a decline of -0.33% which cut 14.56 points from the broad DSEX. The Turnover declined heavily by -15.7% which was 516 Million BDT poorer than that of previous day and finally finished the mark at 2781.10 million BDT. A total of 106 issues advanced with 165 declined and 48 remained unchanged. Sectors that improved were: Food (+0.9%) Insurance (+0.6%) IT (+0.3%) Jute (+0.7%) Paper (+0.4%) Pharmaceuticals (+0.2%) Service (+1.1%) & Sectors that declined were: Bank (-0.7%) Cement (-0.8%) Ceramics (-1.2%) NBFI (-1.4%) Power (-0.5%) Telecom (-0.9%) Textiles (-0.9%) Travel (-1.0%)

KEYACOSMETIC topped in the Volume chart with a turnover of 12.60 BDT crore. IBNSINA ranked top gainer chart with a price hike of +10.00% and SOUTHEASTB topped in the loser chart with a decline of -9.5% from its prevailing price. BATBC led the way in the index mover chart while GP played the shatter part.



| Index Scenario | | | | Market Highlights | | | | | |
|-------------------------------|----------------------------|-----------------|------------------|-------------------------|---------------------------|-------------------------|-------------------|--------------------------|---------------------|
| | INDEX | Change | % Changes | DSEX 52 week H/L | 4992/3960 | Market P/E (LTM) | 13.49 | | |
| | DSEX | 4355.94 | (14.56) | -0.3% | DSEX Week H/L | 4442/4355 | M.Cap (mn) | 3033762.1 | |
| | DSES | 1057.29 | (2.42) | -0.2% | Group Performances | | | | |
| | DS30 | 1651.14 | (4.32) | -0.3% | Category | Mkt Cap (mn.) | Δ % M.Cap | Turnover BDT (mn) | Δ % Turnover |
| Turnover Scenario | | | | Group A | 2,303,086.84 | -0.3% | 2,073.92 | -21.4% | |
| Today's Turnover (mn.) | Change In BDT (mn.) | % Change | | Group B | 11,875.70 | 0.2% | 70.45 | 19.6% | |
| 2781.10 | (516) | -15.7% | | Group N | 39,253.51 | 0.3% | 299.94 | 4.4% | |
| | | | | Group Z | 34,191.97 | -0.6% | 162.69 | -14.0% | |

| Top Ten Volume (in BDT. crore) | | | | | | | | | | | |
|--------------------------------|-------|-------|-------|-----------------|--------|-------|-------|-------|------------------|----------------|--|
| Stock | TT | YT | AT | % Δ in Turnover | TT/AT | CP | YP | % Δ P | Number of shares | Public Holding | |
| KEYACOSMET | 12.60 | 14.98 | 7.42 | -15.9% | 69.9% | 15.1 | 15.6 | -3.2% | 257,856,010.6 | 66% | |
| EMERALDOIL | 11.40 | 12.55 | 6.00 | -9.2% | 90.0% | 62.7 | 63.3 | -0.9% | 54,285,000.0 | 38% | |
| BSRMLTD | 11.33 | 21.27 | 12.67 | -46.8% | -10.6% | 181.8 | 181.3 | 0.3% | 173,351,038.0 | 9% | |
| DSSL | 10.05 | 8.12 | 17.02 | 23.8% | -41.0% | 19.4 | 17.7 | 9.6% | 100,000,000.0 | 56% | |
| GHAIL | 7.16 | 3.53 | 1.43 | 102.6% | 401.4% | 28.1 | 27.3 | 2.9% | 90,090,000.0 | 45% | |
| AMANFEED | 7.02 | 5.18 | 10.08 | 35.6% | -30.4% | 76.3 | 76.6 | -0.4% | 80,000,000.0 | 23% | |
| ZAHEENSPIN | 5.59 | 3.83 | 5.08 | 46.1% | 10.2% | 23.2 | 23.2 | 0.0% | 74,520,000.0 | 17% | |
| FUWANGCER | 5.52 | 5.97 | 4.22 | -7.5% | 30.9% | 18.2 | 19.1 | -4.7% | 102,380,989.5 | 52% | |
| AFCAGRO | 5.27 | 11.30 | 5.78 | -53.3% | -8.7% | 71.5 | 73.1 | -2.2% | 63,250,000.0 | 57% | |
| POPULARLIF | 4.71 | 1.88 | 0.80 | 151.0% | 489.8% | 79.2 | 74.9 | 5.7% | 60,428,358.2 | 61% | |

TT= Today's Turnover in crore, YT= Yesterday's Turnover in Crore, AT= Average of Last 20 day's Turnover, CP= Current Price, YP= Yesterday's Price, % Δ P= percentage change in price

| Top Ten Gainer | | | | | | Top Ten Loser | | | | | |
|----------------|-------|-------|---------|-------|------------------|---------------|--------|--------|--------|-------|------------------|
| Stock | CP | YP | AP | % Δ P | % Δ in P from AP | Stock | CP | YP | AP | % Δ P | % Δ in P from AP |
| IBNSINA | 152 | 138.2 | 140.76 | 10.0% | 8.0% | SOUTHEASTB | 15.20 | 16.80 | 16.83 | -9.5% | -9.7% |
| DSSL | 19.4 | 17.7 | NM | 9.6% | NM | SAVAREFR | 41.00 | 45.00 | 42.99 | -8.9% | -4.6% |
| ZEALBANGLA | 6 | 5.5 | 6.065 | 9.1% | -1.1% | FBFIF | 5.70 | 6.00 | 6.06 | -5.0% | -5.9% |
| LIBRAINFU | 512.1 | 470.9 | 425.295 | 8.7% | 20.4% | FUWANGCER | 18.20 | 19.10 | 17.60 | -4.7% | 3.4% |
| PREMIERLEA | 10 | 9.2 | 9.385 | 8.7% | 6.6% | DBH | 114.80 | 120.40 | 108.56 | -4.7% | 5.7% |
| EASTRNLAB | 858 | 798.2 | 682.505 | 7.5% | 25.7% | MIDAFIN | 17.50 | 18.30 | 17.93 | -4.4% | -2.4% |
| GEMINISEA | 707.5 | 658.2 | 592.545 | 7.5% | 19.4% | 7THICB | 110.10 | 115.00 | 111.86 | -4.3% | -1.6% |
| ANWARGALV | 73.9 | 69.8 | 68.68 | 5.9% | 7.6% | MAKSONSPIN | 6.80 | 7.10 | 6.57 | -4.2% | 3.5% |
| POPULARLIF | 79.2 | 74.9 | 76.91 | 5.7% | 3.0% | NFML | 20.80 | 21.70 | 19.68 | -4.1% | 5.7% |
| EASTERNINS | 24.7 | 23.7 | 24.785 | 4.2% | -0.3% | ORIONINFU | 64.10 | 66.70 | 59.70 | -3.9% | 7.4% |

AP= Average Price of last 20 day,% Δ in P from AP= percentage change in price from the 20-day average price

| Industry /Sectors overview (Amounts in BDT. Crore) | | | | | | | | | | | |
|--|--------------|-----------|----------------|-----------|-----------------|-----------------------|-----------|---------------|-----------|-----------|--|
| Sector | Trade Volume | | MKT Turnover % | | % Δ in Turnover | Market Capitalization | | % of Total MC | | % Δ in MC | |
| | Today | Yesterday | Today | Yesterday | | Today | Yesterday | Today | Yesterday | | |
| Bank | 16.77 | 15.09 | 0.07 | 0.05 | 11.1% | 37208.34 | 37479.55 | 15.62% | 15.68% | -0.7% | |
| Cement | 7.75 | 8.60 | 0.03 | 0.03 | -9.8% | 13683.46 | 13793.36 | 5.74% | 5.77% | -0.8% | |
| Ceramics | 7.77 | 7.77 | 0.03 | 0.03 | 0.1% | 2540.58 | 2572.07 | 1.07% | 1.08% | -1.2% | |
| Engineering | 41.34 | 64.20 | 0.17 | 0.21 | -35.6% | 15241.51 | 15260.42 | 6.40% | 6.39% | -0.1% | |
| Food & Allied Product | 25.21 | 27.02 | 0.10 | 0.09 | -6.7% | 21871.16 | 21673.50 | 9.18% | 9.07% | 0.9% | |
| Insurance | 8.41 | 8.62 | 0.03 | 0.03 | -2.4% | 7291.26 | 7245.06 | 3.06% | 3.03% | 0.6% | |
| IT | 3.62 | 3.48 | 0.01 | 0.01 | 3.8% | 943.29 | 940.10 | 0.40% | 0.39% | 0.3% | |
| Jute | 0.45 | 0.45 | 0.00 | 0.00 | 0.4% | 83.22 | 82.60 | 0.03% | 0.03% | 0.7% | |
| Miscellaneous | 17.15 | 24.94 | 0.07 | 0.08 | -31.2% | 8391.60 | 8416.47 | 3.52% | 3.52% | -0.3% | |
| Mutual Fund | 1.79 | 1.58 | 0.01 | 0.01 | 13.3% | 3579.80 | 3606.96 | 1.50% | 1.51% | -0.8% | |
| NBFI | 14.97 | 20.48 | 0.06 | 0.07 | -26.9% | 7883.05 | 7997.64 | 3.31% | 3.35% | -1.4% | |
| Paper & Printing | 0.55 | 0.25 | 0.00 | 0.00 | 119.9% | 184.99 | 184.20 | 0.08% | 0.08% | 0.4% | |
| Pharmaceuticals & Chemicals | 42.16 | 56.18 | 0.17 | 0.18 | -25.0% | 40444.88 | 40347.12 | 16.98% | 16.88% | 0.2% | |
| Power & Energy | 23.27 | 29.36 | 0.10 | 0.10 | -20.7% | 31849.26 | 32015.87 | 13.37% | 13.40% | -0.5% | |
| Service & Real Estate | 3.34 | 2.79 | 0.01 | 0.01 | 19.6% | 1651.31 | 1632.63 | 0.69% | 0.68% | 1.1% | |
| Tannery | 0.94 | 1.06 | 0.00 | 0.00 | -11.2% | 2213.74 | 2217.02 | 0.93% | 0.93% | -0.1% | |
| Telecommunication | 3.98 | 4.54 | 0.02 | 0.01 | -12.4% | 33379.55 | 33667.75 | 14.01% | 14.09% | -0.9% | |
| Textile | 22.85 | 25.66 | 0.09 | 0.08 | -10.9% | 7836.04 | 7904.31 | 3.29% | 3.31% | -0.9% | |
| Travel & Leisure | 2.26 | 2.90 | 0.01 | 0.01 | -21.9% | 1934.52 | 1953.37 | 0.81% | 0.82% | -1.0% | |

MC= Market Capitalization, % Δ in Turnover= change in turnover from last day, % Δ in MC= change in Market cap from last day

| Index Movers | Index Shakers | Sector wise P/E (Fd.) | | | |
|--------------|---------------|-----------------------|--------|-----------------------------|-------|
| BATBC | GP | Bank | 8.30 | NBFI | 41.72 |
| SQRPHARMA | SOUTHEASTB | Cement | 29.43 | Paper & Printing | 99.29 |
| DESCO | HEIDELBCEM | Ceramics | 33.93 | Pharmaceuticals & Chemicals | 26.60 |
| UCB | UPGDCL | Engineering | 55.11 | Power & Energy | 15.42 |
| EBL | DBH | Food & Allied Product | 28.05 | Service & Real Estate | 28.21 |
| IBNSINA | BRACBANK | Insurance | 13.22 | Tannery | 52.46 |
| POPULARLIF | ISLAMIBANK | IT | 93.27 | Telecommunication | 25.94 |
| DSSL | KPCL | Jute | 154.12 | Textile | 16.57 |
| SAPORTL | RENATA | Miscellaneous | 33.80 | Travel & Leisure | 20.51 |
| SHAHJABANK | POWERGRID | | | | |

Important News

Company News:

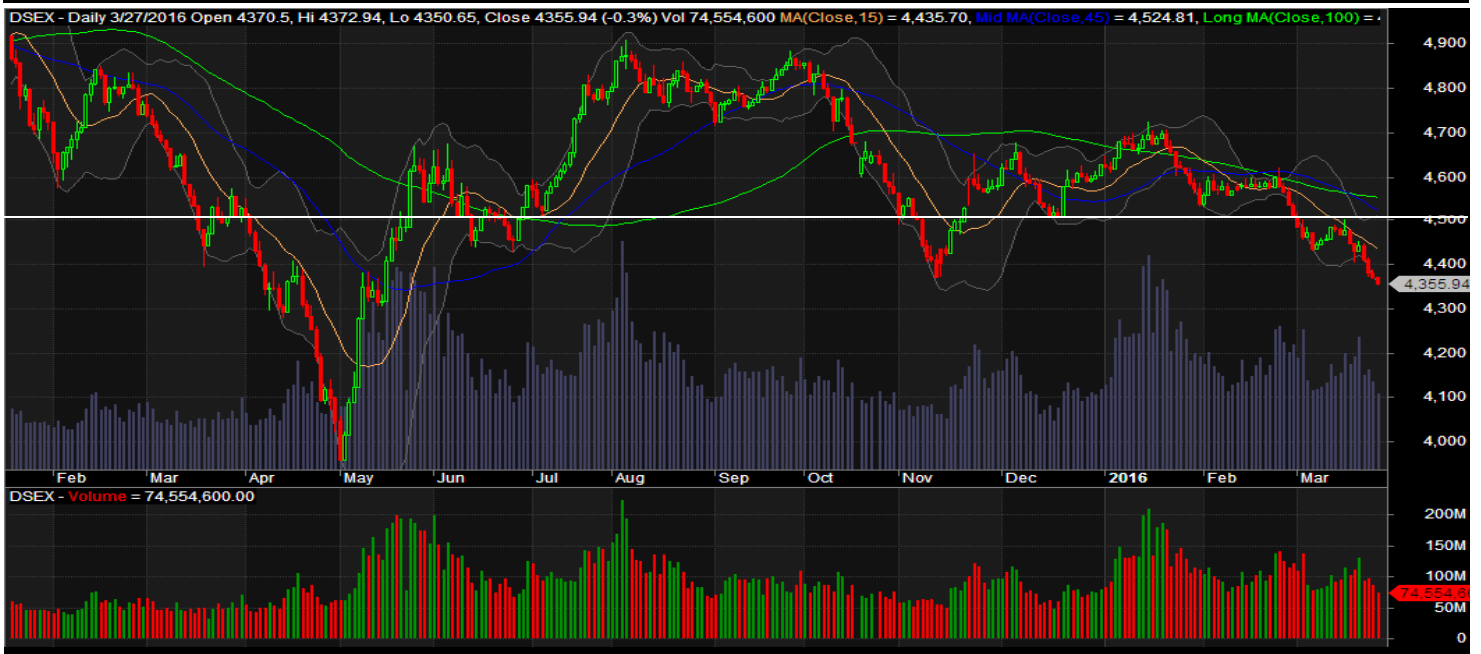
PHENIXINS: Dividend Declaration: The Board of Directors has recommended 18% cash dividend for the year ended on 31.12.2015. Date of AGM: 02.06.2016, Time: 3:30 PM, Venue: Army Golf Club, Dhaka Cantonment, Dhaka. Record Date: 19.04.2016. The Company has also reported Net Profit after Tax of Tk. 114.66 million, EPS of Tk. 2.84, NAV per share of Tk. 31.27 and NOCFPS of Tk. 3.37 for the year ended on 31.12.2015 as against Tk. 138.16 million, Tk. 3.42, Tk. 32.63 and Tk. 2.98 respectively for the year ended on 31.12.2014.

Recent Dividend Declaration

| Ticker | Dividend | Record Date |
|--------------------------------------|--------------|-------------|
| Phoenix Finance and Investments Ltd. | 20% C | 31.03.16 |
| Bank Asia Limited | 15% C & 5% B | 31.03.16 |
| Lafarge Surma Cement Limited | 5% C (Final) | 13.04.16 |
| Bangladesh Lamps Ltd. | 20% C | 30.03.16 |

Note: C= cash Dividend, B= Bonus Dividend, R=Right, N/A=NotApplicable

DSEX Technical Graph for last one year



MTB CAPITAL LIMITED

Corporate head office

Level: 3, MTB Tower, 111, Kazi Nazrul Islam Avenue, Dhaka

Phone: 8321714, Fax: 8321543

www.mtbcap.com

A Mutual Trust Bank Company

you can invest with us

Disclaimer

This report has been prepared by the MTB Capital Limited (MTBCL) on the basis of available information in the market and it is provided for the purposes only. It is not to be used as an offer for buying or selling any instruments. If anyone takes any action relying on this information, shall be responsible solely by him/her self for any consequences. The best care has been taken to make the report informative. MTBCL doesn't give any warrant or guarantee that the report or such information is fully accurate. The information that are provided here is the exclusive property of MTBCL and can not be distributed without prior consent of MTBCL.