

Today's Market Overview

Sunday, February 14, 2016

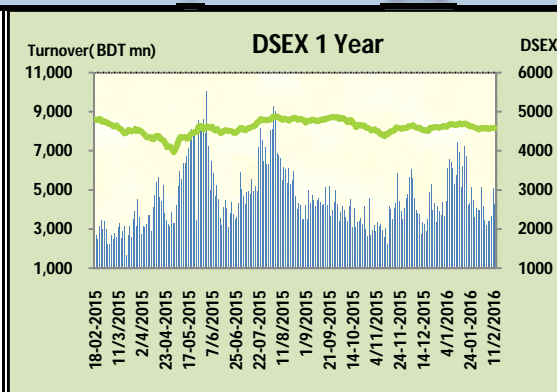


DSEX	4,580.56	-0.02%	Issues Traded	Advanced	Declined	Unchanged
Turnover (BDT mn)	4,276.05	-15.44%		99	191	36

Market observed marginal fall after three days of gaining streak with a declined turnover. The premier bourse of the nation opened with a positive mood but couldn't sustain for an hour, soon after the first hour investors went for picking quick gain and heavy sale pressure pushed the market to the red zone. A super recovery stance took place during the midsession as some big cap stocks tried to move in this time but late hour sale pressure again frustrated the market. Poor participation in the late hour actually created the tension among the active investors. Most of the investors were busy in offloading, notable concentration was not found in any sectors except Power % Pharmaceuticals. Other two indices DS30 & DSES the shariah based index both put green mark in the board. Most of the major sectors performed marginally mixed. Among the major sectors Food, Engineering & Power performed well while Cement, Telecom & NBFI failed to put gain.

The general gauge DSEX ended at 4580.56 with a decline of -0.01% which cut only 0.79 points from the broad DSEX. The Turnover declined by 15.4% which was 781 Million BDT Poorer than that of previous day and finally finished the mark at 4276.05 million BDT. A total of 99 issues advanced with 191 declined and 36 remained unchanged. Sectors that improved were: Bank (+0.3%) Engineering (+0.7%) Food (+0.9 %) Pharmaceuticals (+0.1%) Power (+0.5%) & Sectors that declined were: Cement (-0.7%) Ceramics (-0.4%) IT (-3.3%) Miscellaneous (-0.7%) NBFI (-0.3%) Telecom (-0.4%) Textiles (-1.2%) Service (-0.2%)

BSRMLTD topped in the Volume chart with a turnover of 33.38 BDT crore. ISLAMIBANK ranked top gainer chart with a price hike of +10.0% and LIBRAINFu topped in the loser chart with a decline of -6.8% from its prevailing price. ISLAMIBANK led the way in the index mover chart while LAFSURCEML played the shatter part.



Index Scenario				Market Highlights				
INDEX	Change	% Changes		DSEX 52 week H/L	4992/3960	Market P/E (LTM)	14.72	
DSEX	4580.56	(0.79)	0.0%	DSEX Week H/L	4581/4560	M.Cap (mn)	3173941.4	
DSES	1122.27	3.40	0.3%	Group Performances				
DS30	1760.57	0.99	0.1%	Category	Mkt Cap (mn.)	Δ % M.Cap	Turnover BDT (mn)	Δ % Turnover
Turnover Scenario				Group A	2,458,180.53	0.1%	3,669.46	-17.4%
Today's Turnover (mn.)	Change In BDT (mn.)	% Change		Group B	12,147.98	-1.9%	76.95	-19.4%
4276.05	(781)	-15.4%		Group N	35,140.50	0.3%	469.52	48.1%
				Group Z	32,674.03	-0.9%	48.03	-15.2%

Top Ten Volume (in BDT. crore)										
Stock	TT	YT	AT	% Δ in Turnover	TT/AT	CP	YP	% Δ P	Number of shares	Public Holding
BSRMLTD	33.38	56.56	6.18	-41.0%	440.4%	154.5	146.3	5.6%	173,351,038.0	9%
UPGDCL	28.13	16.36	12.85	72.0%	119.0%	163.6	161.8	1.1%	362,944,698.6	5%
IFADAUTOS	25.00	9.51	7.05	162.8%	254.8%	96.6	94.5	2.2%	149,500,000.0	17%
BXPHERMA	24.33	27.90	14.51	-12.8%	67.6%	93.3	94.4	-1.2%	386,244,234.6	50%
SQURPHARMA	18.29	7.83	11.16	133.5%	63.8%	266.9	263.4	1.3%	623,586,546.0	9%
OLYMPIC	9.64	7.54	6.47	27.9%	49.0%	298.6	295.6	1.0%	190,417,988.2	27%
KPCL	9.57	4.58	3.91	108.6%	144.7%	77.3	76	1.7%	361,284,710.0	13%
AMANFEED	8.76	6.11	2.90	43.3%	202.0%	47.7	46.3	3.0%	80,000,000.0	23%
BSRMSTEEL	8.20	15.19	4.22	-46.0%	94.3%	93.2	93.3	-0.1%	341,775,000.0	13%
SAPORTL	7.23	4.78	3.94	51.5%	83.6%	46.3	47	-1.5%	171,762,330.6	24%

TT= Today's Turnover in crore, YT= Yesterday's Turnover in Crore, AT= Average of Last 20 day's Turnover, CP= Current Price, YP= Yesterday's Price, % Δ P= percentage change in price

Top Ten Gainer						Top Ten Loser					
Stock	CP	YP	AP	% Δ P	% Δ in P from AP	Stock	CP	YP	AP	% Δ P	% Δ in P from AP
ISLAMIBANK	25.4	23.1	26.06	10.0%	-2.5%	LIBRAINFU	502.00	538.90	384.46	-6.8%	30.6%
GEMINISEA	607.2	564.9	408.865	7.5%	48.5%	ITC	54.00	57.20	67.43	-5.6%	-19.9%
SHYAMPSUG	6.6	6.2	6.605	6.5%	-0.1%	SAVAREFR	46.00	48.70	48.34	-5.5%	-4.8%
BSRMLTD	154.5	146.3	123.1	5.6%	25.5%	PREMIERLEA	9.10	9.60	9.28	-5.2%	-1.9%
IPDC	30.5	29	29.41	5.2%	3.7%	ALLTEX	27.40	28.80	28.65	-4.9%	-4.3%
PRIMELIFE	55.7	53.1	44.3	4.9%	25.7%	FUWANGCER	15.70	16.50	14.21	-4.8%	10.5%
RELIANCINS	50	47.8	50.165	4.6%	-0.3%	MONNOSTAF	310.70	326.20	319.22	-4.8%	-2.7%
PEOPLESINS	16.9	16.3	16.56	3.7%	2.1%	UNITEDINS	26.30	27.60	29.15	-4.7%	-9.8%
AZIZPIPES	37	35.8	36.34	3.4%	1.8%	CMCKAMAL	16.40	17.20	15.97	-4.7%	2.7%
BSC	354.2	343.1	335.675	3.2%	5.5%	STYLECRAFT	1,000.60	1,047.80	966.66	-4.5%	3.5%

AP= Average Price of last 20 day,% Δ in P from AP= percentage change in price from the 20-day average price

Industry /Sectors overview (Amounts in BDT. Crore)											
Sector	Trade Volume		MKT Turnover %		% Δ in Turnover	Market Capitalization		% of Total MC		% Δ in MC	
	Today	Yesterday	Today	Yesterday		Today	Yesterday	Today	Yesterday		
Bank	18.90	29.78	0.04	0.06	-36.5%	39568.93	39431.13	15.61%	15.56%	0.3%	
Cement	17.42	25.34	0.04	0.05	-31.3%	14754.34	14856.96	5.82%	5.86%	-0.7%	
Ceramics	8.08	12.27	0.02	0.03	-34.1%	2772.88	2783.38	1.09%	1.10%	-0.4%	
Engineering	102.19	120.15	0.24	0.25	-14.9%	15883.02	15767.29	6.27%	6.22%	0.7%	
Food & Allied Product	19.44	24.06	0.05	0.05	-19.2%	24994.92	24783.69	9.86%	9.78%	0.9%	
Insurance	13.52	9.39	0.03	0.02	44.0%	7372.11	7397.18	2.91%	2.92%	-0.3%	
IT	8.60	9.94	0.02	0.02	-13.5%	978.97	1012.89	0.39%	0.40%	-3.3%	
Jute	0.78	1.41	0.00	0.00	-44.6%	83.90	84.38	0.03%	0.03%	-0.6%	
Miscellaneous	21.00	22.04	0.05	0.05	-4.7%	8447.21	8505.64	3.33%	3.36%	-0.7%	
Mutual Fund	3.43	4.66	0.01	0.01	-26.4%	3634.92	3641.32	1.43%	1.44%	-0.2%	
NBFI	16.16	15.73	0.04	0.03	2.8%	8687.17	8716.39	3.43%	3.44%	-0.3%	
Paper & Printing	0.46	0.56	0.00	0.00	-17.8%	181.58	185.68	0.07%	0.07%	-2.2%	
Pharmaceuticals & Chemicals	65.84	64.99	0.16	0.13	1.3%	42300.43	42256.64	16.69%	16.68%	0.1%	
Power & Energy	68.75	62.31	0.16	0.13	10.3%	33291.72	33127.48	13.13%	13.08%	0.5%	
Service & Real Estate	13.38	8.14	0.03	0.02	64.3%	1841.67	1846.00	0.73%	0.73%	-0.2%	
Tannery	1.47	2.04	0.00	0.00	-28.0%	2376.60	2374.00	0.94%	0.94%	0.1%	
Telecommunication	6.56	10.66	0.02	0.02	-38.4%	36179.72	36339.17	14.27%	14.34%	-0.4%	
Textile	32.13	54.73	0.08	0.11	-41.3%	8058.31	8153.25	3.18%	3.22%	-1.2%	
Travel & Leisure	3.25	5.18	0.01	0.01	-37.2%	2060.37	2077.26	0.81%	0.82%	-0.8%	

MC= Market Capitalization, % Δ in Turnover= change in turnover from last day, % Δ in MC= change in Market cap from last day

Index Movers	Index Shakers	Sector wise P/E (Fd.)			
ISLAMIBANK	LAFSURCEML	Bank	9.09	NBFI	42.03
SQRPHARMA	GP	Cement	31.31	Paper & Printing	102.77
BATBC	RENATA	Ceramics	37.59	Pharmaceuticals & Chemicals	28.68
BSRMLTD	BERGERPBL	Engineering	60.04	Power & Energy	16.51
UPGDCL	EBL	Food & Allied Product	31.77	Service & Real Estate	33.91
OLYMPIC	BXPHERMA	Insurance	14.03	Tannery	54.94
SUMITPOWER	BSCCL	IT	97.16	Telecommunication	27.31
TITASGAS	DHAKABANK	Jute	172.21	Textile	18.30
KPCL	GLAXOSMITH	Miscellaneous	37.55	Travel & Leisure	23.13
IFADAUTOS	DELTALIFE				

Important News

Company News:

GREENDEL: Dividend Declaration: The Board of Directors has recommended 25% cash dividend for the year ended on December 31, 2015. Date of AGM: 31.03.2016, Time: 11:00 AM, Venue: Spectra Convention Center Ltd., House No. 19, Road No. 7, Gulshan-1, Dhaka-1212. Record Date: 06.03.2016. The Company has also reported Net Profit after tax of Tk. 230.30 million, EPS of Tk. 2.85, NAV per share of Tk. 70.54 and NOCFPS of Tk. 0.46 for the year ended on December 31, 2015 as against Tk. 239.26 million, Tk. 2.96 (restated), Tk. 60.14 (restated) and Tk. 0.19 (restated) respectively for the year ended on December 31, 2014.

GEMINISEA: Q1 Financials (Q1 Un-audited): EPS for October-December, 2015 was Tk. 8.54 as against Tk. (1.59) for October-December, 2014; NOCFPS was Tk. 24.71 for October-December, 2015 as against Tk. (48.80) for October-December, 2014. NAV per share was Tk. 8.87 as of December 31, 2015 and Tk. 1.83 as of September 30, 2015. Accumulated profit/(loss) of the Company was Tk. (1.25) million as on 31.12.2015.

ENVOYTEX: Q1 Financials (Q1 Un-audited): EPS for October-December, 2015 was Tk. 1.08 as against Tk. 1.15 for October-December, 2014; NOCFPS was Tk. 0.73 for October-December, 2015 as against Tk. (0.20) for October-December, 2014. NAV per share was Tk. 37.51 as of December 31, 2015 and Tk. 38.18 as of September 30, 2015.

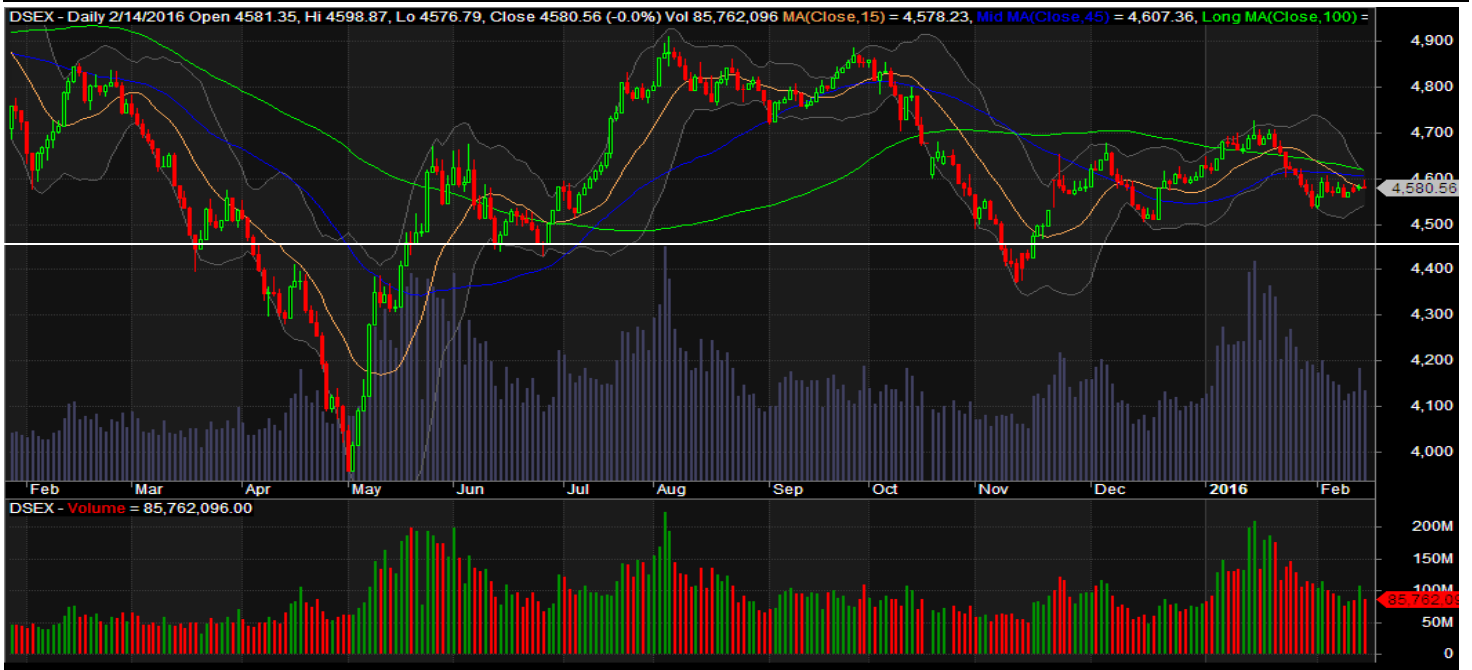
Recent Dividend Declaration

Ticker	Dividend	Record Date
--------	----------	-------------

Marico	100%C	15.02.2016
--------	-------	------------

Note: C= cash Dividend, B= Bonus Dividend, R=Right, N/A=NotApplicable

DSEX Technical Graph for last one year



MTB CAPITAL LIMITED

Corporate head office

Level: 3, MTB Tower, 111, Kazi Nazrul Islam Avenue, Dhaka

Phone: 8321714, Fax: 8321543

www.mtbcap.com

A Mutual Trust Bank Company

you can invest with us

Disclaimer

This report has been prepared by the MTB Capital Limited (MTBCL) on the basis of available information in the market and it is provided for the purposes only. It is not to be used as an offer for buying or selling any instruments. If anyone takes any action relying on this information, shall be responsible solely by him/her self for any consequences. The best care has been taken to make the report informative. MTBCL doesn't give any warrant or guarantee that the report or such information is fully accurate. The information that are provided here is the exclusive property of MTBCL and can not be distributed without prior consent of MTBCL.