

Today's Market Overview



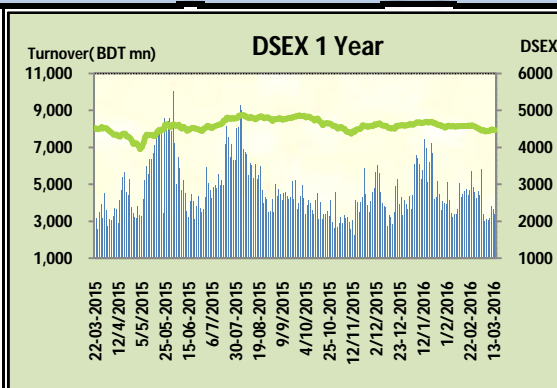
Monday, March 14, 2016

DSEX	4,467.62	-0.28%	Issues Traded	Advanced	Declined	Unchanged
Turnover (BDT mn)	3,367.52	-8.45%		122	134	53

Market continued the losing streak for the consecutive two days with a very sluggish turnover. The premier bourse of the nation opened with a negative mood and continued the same mood till the closure. Market tried to keep the momentum till the midsession but soon after the midsession sellers became very aggressive while they found less buoyancy in the market. Market actually started suffering with less confidence, moreover some recent national issues made it more volatile thus led to a poor participation level as the volume failed to cross 3.5 billion mark. Most of the major sectors failed to keep the price level though notable concentration occurred in Pharmaceuticals, Power & Telecom. Small cap stocks tried to take the advantage of poor transaction in big paid up stocks and some of them were stocked. Most of the major sectors were loser except Engineering. Other two indices DS30 & DSES the shariah based index both performed poor. Jute was the best gainer followed by Travel & Tannery.

The general gauge DSEX ended at 4467.62 with a decline of -0.3% which cut 12.57 points from the broad DSEX. The Turnover declined by -8.4% which was 311 Million BDT poorer than that of previous day and finally finished the mark at 3367.52 million BDT. A total of 122 issues advanced with 134 declined and 53 remained unchanged. Sectors that improved were: Engineering (+0.4%) Jute (+2.1%) Miscellaneous (+0.1%) Pharmaceuticals (+0.1%) Tannery (+0.2%) Travel (+0.4%) & Sectors that declined were: Bank (-0.3%) Cement (-0.3%) Ceramics (-0.6%) Food (-0.2%) NBFI (-1.1%) Power (-0.6%) Service (-1.4%) Telecom (-0.8%)

AMANFEED topped in the Volume chart with a turnover of 20.05 BDT crore. KEYACOSMETIC ranked top gainer chart with a price hike of +9.0% and NCCBLMF1 topped in the loser chart with a decline of -7.8% from its prevailing price. BSRMLTD led the way in the index mover chart while GP played the shatter part.



Index Scenario				Market Highlights				
INDEX	Change	% Changes		DSEX 52 week H/L	4992/3960	Market P/E (LTM)	14.06	
DSEX	4467.62	(12.57)	-0.3%	DSEX Week H/L	4485/4453	M.Cap (mn)	3100683.4	
DSES	1085.42	(1.63)	-0.2%	Group Performances				
DS30	1712.48	(9.04)	-0.5%	Category	Mkt Cap (mn.)	Δ % M.Cap	Turnover BDT (mn)	Δ % Turnover
Turnover Scenario				Group A	2,372,552.09	-0.3%	2,695.16	-5.6%
Today's Turnover (mn.)	Change In BDT (mn.)	% Change		Group B	11,921.93	-0.3%	59.67	11.1%
3367.52	(311)	-8.4%		Group N	36,657.40	0.0%	445.17	-21.6%
				Group Z	33,782.72	1.0%	155.40	63.2%

Top Ten Volume (in BDT. crore)										
Stock	TT	YT	AT	% Δ in Turnover	TT/AT	CP	YP	% Δ P	Number of shares	Public Holding
AMANFEED	20.05	25.74	10.66	-22.1%	88.0%	69.8	66.2	5.4%	80,000,000.0	23%
KEYACOSMET	13.12	6.42	1.66	104.4%	688.7%	13.3	12.2	9.0%	257,856,010.6	66%
BSCCL	9.76	8.80	3.04	10.9%	220.6%	112.9	110.6	2.1%	164,905,510.0	14%
ORIONPHARM	8.86	14.25	9.19	-37.8%	-3.6%	40.9	41.2	-0.7%	234,000,000.0	44%
SPPCL	8.34	1.97	2.05	322.4%	307.3%	58.4	57	2.5%	151,980,704.0	21%
BXPHARMA	7.36	9.22	11.28	-20.2%	-34.8%	85.2	84.9	0.4%	386,244,234.6	50%
BEXIMCO	7.31	5.12	4.83	42.9%	51.5%	29.1	29.5	-1.4%	691,171,354.4	65%
SQURPHARMA	7.30	3.62	9.09	101.4%	-19.7%	264.8	264.7	0.0%	623,586,546.0	9%
SUMITPOWER	7.29	6.14	7.61	18.8%	-4.2%	41.9	41.4	1.2%	714,284,847.2	15%
CMCKAMAL	7.29	10.85	8.79	-32.8%	-17.0%	20.9	21.3	-1.9%	96,811,412.6	59%

TT= Today's Turnover in crore, YT= Yesterday's Turnover in Crore, AT= Average of Last 20 day's Turnover, CP= Current Price, YP= Yesterday's Price, % Δ P= percentage change in price

Top Ten Gainer						Top Ten Loser					
Stock	CP	YP	AP	% Δ P	% Δ in P from AP	Stock	CP	YP	AP	% Δ P	% Δ in P from AP
KEYACOSMET	13.3	12.2	11.75	9.0%	13.2%	NCCBLMF1	5.90	6.40	6.40	-7.8%	-7.8%
FUWANGFOOD	15.5	14.3	14.355	8.4%	8.0%	IDLC	52.20	55.20	57.08	-5.4%	-8.5%
DESHBANDHU	12.2	11.5	11.65	6.1%	4.7%	RUPALILIFE	40.20	42.10	39.21	-4.5%	2.5%
BEACHHATCH	14.5	13.7	13.675	5.8%	6.0%	SINOBANGLA	32.80	33.90	35.56	-3.2%	-7.8%
AMANFEED	69.8	66.2	56.69	5.4%	23.1%	JAMUNAOIL	153.90	158.90	147.47	-3.1%	4.4%
MIDASFIN	19.6	18.7	17.245	4.8%	13.7%	LIBRAINFU	408.80	421.90	431.11	-3.1%	-5.2%
PIONEERINS	33.2	31.7	33.195	4.7%	0.0%	ITC	54.00	55.60	51.41	-2.9%	5.0%
ASIAPACINS	15.1	14.5	15.06	4.1%	0.3%	PHOENIXFIN	20.90	21.50	22.08	-2.8%	-5.3%
ISNLTD	15.4	14.8	15.49	4.1%	-0.6%	SAPORTL	42.10	43.20	41.70	-2.5%	1.0%
SALVOCHEM	13.8	13.3	13.4	3.8%	3.0%	JANATAINS	11.80	12.10	11.98	-2.5%	-1.5%

AP= Average Price of last 20 day,% Δ in P from AP= percentage change in price from the 20-day average price

Industry /Sectors overview (Amounts in BDT. Crore)											
Sector	Trade Volume		MKT Turnover %		% Δ in Turnover	Market Capitalization		% of Total MC		% Δ in MC	
	Today	Yesterday	Today	Yesterday		Today	Yesterday	Today	Yesterday		
Bank	20.54	19.87	0.06	0.06	3.4%	38058.07	38185.79	15.53%	15.53%	-0.3%	
Cement	11.19	7.90	0.03	0.02	41.6%	14309.79	14349.82	5.84%	5.84%	-0.3%	
Ceramics	4.68	4.54	0.01	0.01	3.0%	2641.47	2656.24	1.08%	1.08%	-0.6%	
Engineering	50.75	52.87	0.15	0.15	-4.0%	15171.86	15115.18	6.19%	6.15%	0.4%	
Food & Allied Product	14.31	15.75	0.04	0.04	-9.2%	23197.98	23240.71	9.47%	9.45%	-0.2%	
Insurance	7.32	12.17	0.02	0.03	-39.9%	7379.12	7391.70	3.01%	3.01%	-0.2%	
IT	7.48	10.73	0.02	0.03	-30.2%	972.24	986.01	0.40%	0.40%	-1.4%	
Jute	1.29	0.56	0.00	0.00	131.1%	84.06	82.36	0.03%	0.03%	2.1%	
Miscellaneous	39.63	43.59	0.12	0.12	-9.1%	8400.37	8393.84	3.43%	3.41%	0.1%	
Mutual Fund	2.47	1.37	0.01	0.00	80.0%	3636.03	3633.75	1.48%	1.48%	0.1%	
NBFI	11.48	24.45	0.03	0.07	-53.1%	8180.59	8275.44	3.34%	3.37%	-1.1%	
Paper & Printing	0.44	0.35	0.00	0.00	27.1%	184.61	184.61	0.08%	0.08%	0.0%	
Pharmaceuticals & Chemicals	58.54	54.99	0.18	0.16	6.5%	41399.64	41350.68	16.89%	16.82%	0.1%	
Power & Energy	44.31	43.88	0.13	0.12	1.0%	33223.36	33424.27	13.56%	13.60%	-0.6%	
Service & Real Estate	5.39	6.18	0.02	0.02	-12.7%	1728.85	1754.20	0.71%	0.71%	-1.4%	
Tannery	1.23	0.64	0.00	0.00	91.7%	2213.73	2209.30	0.90%	0.90%	0.2%	
Telecommunication	14.90	9.89	0.05	0.03	50.7%	34417.52	34703.66	14.04%	14.12%	-0.8%	
Textile	31.91	39.94	0.10	0.11	-20.1%	7907.76	7909.51	3.23%	3.22%	0.0%	
Travel & Leisure	3.04	2.64	0.01	0.01	15.2%	1967.73	1960.24	0.80%	0.80%	0.4%	

MC= Market Capitalization, % Δ in Turnover= change in turnover from last day, % Δ in MC= change in Market cap from last day

Index Movers	Index Shakers	Sector wise P/E (Fd.)			
BSRMLTD	GP	Bank	8.47	NBFI	41.02
BSCCL	TITASGAS	Cement	30.56	Paper & Printing	98.83
POWERGRID	IDLC	Ceramics	34.61	Pharmaceuticals & Chemicals	27.42
SUMITPOWER	JAMUNAOIL	Engineering	55.59	Power & Energy	15.62
MARICO	OLYMPIC	Food & Allied Product	29.66	Service & Real Estate	30.69
AMANFEED	MJLBD	Insurance	13.12	Tannery	54.38
SINGERBD	MPETROLEUM	IT	97.49	Telecommunication	27.85
SPPCL	PADMAOIL	Jute	152.70	Textile	16.98
SPCL	ISLAMIBANK	Miscellaneous	35.90	Travel & Leisure	21.04
NBL	HEIDELBCEM				

Important News

Company News:

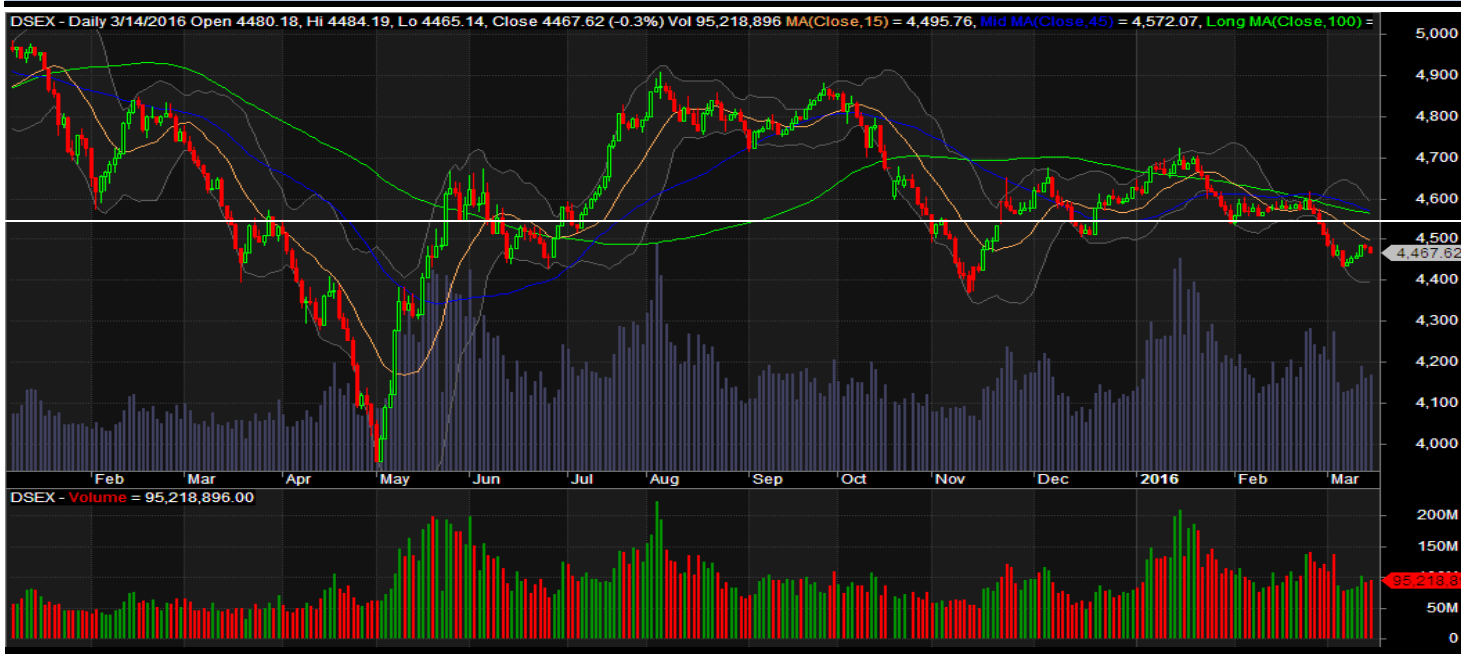
SINOBANGLA: Q1 Financials: (Q1 Un-audited): EPS for November 2015- January, 2016 was Tk. 0.31 as against Tk. 0.23 for November 2014- January, 2015; NOCFPS was Tk. 0.83 for November 2015- January, 2016 as against Tk. 2.26 for November 2014- January, 2015. NAV per share was Tk. 25.24 as of January 31, 2016 and Tk. 24.93 as of October 31, 2015.

Recent Dividend Declaration

Ticker	Dividend	Record Date
Dutch Bangla Bank Limited	40% C	15.03.16
Phoenix Finance and Investments Ltd.	20% C	31.03.16
Summit Alliance Port Ltd.	10% B	21.03.16

Note: C= cash Dividend, B= Bonus Dividend, R=Right, N/A=NotApplicable

DSEX Technical Graph for last one year



MTB CAPITAL LIMITED

Corporate head office

Level: 3, MTB Tower, 111, Kazi Nazrul Islam Avenue, Dhaka

Phone: 8321714, Fax: 8321543

www.mtbcap.com

A Mutual Trust Bank Company

you can invest with us

Disclaimer

This report has been prepared by the MTB Capital Limited (MTBCL) on the basis of available information in the market and it is provided for the purposes only. It is not to be used as an offer for buying or selling any instruments. If anyone takes any action relying on this information, shall be responsible solely by him/her self for any consequences. The best care has been taken to make the report informative. MTBCL doesn't give any warrant or guarantee that the report or such information is fully accurate. The information that are provided here is the exclusive property of MTBCL and can not be distributed without prior consent of MTBCL.