

Today's Market Overview

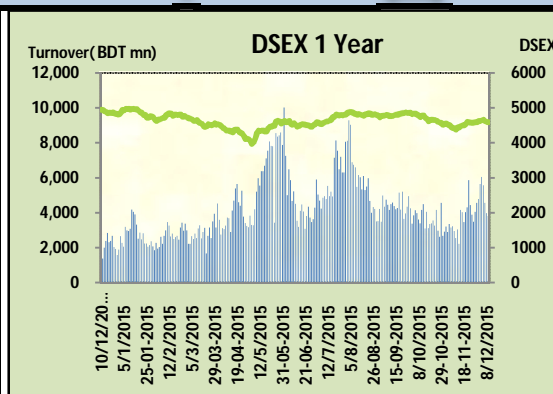
Wednesday, December 09, 2015



DSEX	4,587.38	-0.13%	Issues Traded	Advanced	Declined	Unchanged
Turnover (BDT mn)	3,814.14	-4.19%		144	126	53

Market extended another day of marginal loss with a slightly declined turnover. The premier bourse of the nation opened with very negative mood and continued the same mood till the closure. Market observed recovery stance for couple of times as some major sectors put mixed performances. Engineering, Power, Food & Miscellaneous tried to gain but other remained in red zone. Market observed concentration mostly on small cap stocks like Insurance, IT jute & Tannery. Most of the investors remained in sideline and took the vigilant posture while active investors remained very cautious. Other two indices DS30 & DSES the shariah based index both performed poor. IT was the best gainer followed by Insurance & Miscellaneous while Telecom was the worst loser followed by Cement & NBFIL.

The general gauge DSEX ended at 4587.38 with a decline of -0.1% which cut 6.11 points from the broad DSEX. The Turnover declined slightly by -4.2% which was 167 Million BDT poorer than that of previous day and finally finished the mark at 3814.14 million BDT. A total of 144 issues advanced with 126 declined and 53 remained unchanged. Sectors that improved were: Engineering (+0.2%) Food (+0.2%) Insurance (+0.9%) Miscellaneous (+0.7%) IT (+1.4%) Power (+0.2%) Tannery (+0.6%) & sectors that declined were: Bank (-0.2%) Cement (-0.7%) Ceramics (-0.5%) NBFIL (-0.8%) Pharmaceuticals (-0.1%) Telecom (-0.9%) Service (-0.3%) Travel (-1.1%) AFTABAUTO topped in the Volume chart with a turnover of 16.51 BDT crore. APEXTANRY ranked top gainer chart with a price hike of +10.0% and ATCLGF topped in the loser chart with a decline of -7.8% from its prevailing price. UPGDCL led the way in the index mover chart while GP played the shatter part.



Index Scenario				Market Highlights					
	INDEX	Change	% Changes	DSEX 52 week H/L	4992/3960	Market P/E (LTM)	14.78		
	DSEX	4587.38	(6.11)	-0.1%	DSEX Week H/L	4655/4587	M.Cap (mn)	3149641.5	
	DSES	1104.78	(1.80)	-0.2%	Group Performances				
	DS30	1743.95	(5.29)	-0.3%	Category	Mkt Cap (mn.)	Δ % M.Cap	Turnover BDT (mn)	Δ % Turnover
Turnover Scenario				Group A	2,439,529.44	-0.2%	3,210.07	-2.2%	
Today's Turnover (mn.)	Change In BDT (mn.)	% Change		Group B	13,314.92	0.6%	105.52	-11.0%	
3814.14	(167)	-4.2%		Group N	33,687.67	-1.2%	285.72	-21.7%	
				Group Z	23,846.99	0.1%	85.60	-10.6%	

Top Ten Volume (in BDT. crore)											
Stock	TT	YT	AT	% Δ in Turnover	TT/AT	CP	YP	% Δ P	Number of shares	Public Holding	
AFTABAUTO	16.51	4.62	5.18	257.1%	218.8%	64.4	62.4	3.2%	95,732,422.0	22%	
BXPHERMA	16.36	12.93	14.95	26.5%	9.5%	81	81.2	-0.2%	386,244,234.6	50%	
SQURPHARMA	13.94	18.93	11.60	-26.4%	20.2%	254.3	255	-0.3%	623,586,546.0	9%	
QSM DRYCELL	13.83	19.78	11.10	-30.1%	24.6%	93.8	97.5	-3.8%	40,479,436.8	54%	
DELTA LIFE	13.45	20.15	5.91	-33.2%	127.8%	124.3	124	0.2%	123,750,000.0	63%	
BSRMSTEEL	13.29	23.76	11.60	-44.0%	14.6%	99.2	98.7	0.5%	341,775,000.0	13%	
UPGDCL	9.92	6.72	7.56	47.7%	31.1%	143.5	139	3.2%	362,944,698.6	5%	
KDSALTD	8.95	9.16	10.83	-2.2%	-17.3%	84.2	87.1	-3.3%	52,000,000.0	21%	
MICEMENT	7.28	7.13	4.23	2.1%	72.0%	92.5	93	-0.5%	148,500,000.0	30%	
SHASHADNIM	7.06	5.22	3.01	35.1%	134.6%	42	41	2.4%	112,787,630.0	46%	

TT= Today's Turnover in crore, YT= Yesterday's Turnover in Crore, AT= Average of Last 20 day's Turnover, CP= Current Price, YP= Yesterday's Price, % Δ P= percentage change in price

Top Ten Gainer						Top Ten Loser					
Stock	CP	YP	AP	% Δ P	% Δ in P from AP	Stock	CP	YP	AP	% Δ P	% Δ in P from AP
APEXTANRY	119.9	109	111.46	10.0%	7.6%	ATCSLGF	7.10	7.70	7.68	-7.8%	-7.6%
BDAUTOCA	39.7	36.3	36.625	9.4%	8.4%	ALLTEX	17.60	19.00	19.77	-7.4%	-11.0%
SAMATALETH	23.7	21.9	23.095	8.2%	2.6%	AGRANINS	14.60	15.60	14.42	-6.4%	1.2%
SHYAMPSUG	6.7	6.2	6.36	8.1%	5.3%	FEKDIL	18.10	19.10	22.06	-5.2%	-18.0%
PROGRESLIF	62.6	58.5	56.215	7.0%	11.4%	UNITEDINS	23.90	25.10	23.70	-4.8%	0.9%
DACCADYE	12.9	12.1	13.355	6.6%	-3.4%	FBFIF	6.20	6.50	5.97	-4.6%	3.9%
APEXSPINN	86.5	81.2	75.615	6.5%	14.4%	GQBALLPEN	67.10	70.20	61.69	-4.4%	8.8%
EXIMISTMF	5.1	4.8	5.315	6.3%	-4.0%	AMANFEED	47.80	49.90	46.53	-4.2%	2.7%
MIRACLEIND	22.9	21.7	21.875	5.5%	4.7%	RUPALIBANK	34.40	35.90	38.75	-4.2%	-11.2%
LEGACYFOOT	29.2	27.7	25.79	5.4%	13.2%	BSC	345.90	360.80	329.59	-4.1%	4.9%

AP= Average Price of last 20 day,% Δ in P from AP= percentage change in price from the 20-day average price

Industry /Sectors overview (Amounts in BDT. Crore)											
Sector	Trade Volume		MKT Turnover %		% Δ in Turnover	Market Capitalization		% of Total MC		% Δ in MC	
	Today	Yesterday	Today	Yesterday		Today	Yesterday	Today	Yesterday		
Bank	21.52	17.34	0.06	0.05	24.1%	39915.09	40010.26	15.92%	15.93%	-0.2%	
Cement	19.04	19.24	0.05	0.05	-1.1%	15695.07	15813.46	6.26%	6.30%	-0.7%	
Ceramics	3.03	4.85	0.01	0.01	-37.6%	2618.84	2631.26	1.04%	1.05%	-0.5%	
Engineering	90.42	98.86	0.25	0.26	-8.5%	15733.49	15701.57	6.28%	6.25%	0.2%	
Food & Allied Product	11.12	9.39	0.03	0.02	18.5%	23885.95	23849.79	9.53%	9.50%	0.2%	
Insurance	28.08	30.47	0.08	0.08	-7.8%	7535.24	7468.48	3.01%	2.97%	0.9%	
IT	2.60	3.75	0.01	0.01	-30.8%	519.96	512.69	0.21%	0.20%	1.4%	
Jute	0.58	0.45	0.00	0.00	29.9%	87.62	87.17	0.03%	0.03%	0.5%	
Miscellaneous	14.02	18.90	0.04	0.05	-25.9%	8036.50	7979.45	3.21%	3.18%	0.7%	
Mutual Fund	5.15	6.29	0.01	0.02	-18.1%	3548.42	3569.06	1.42%	1.42%	-0.6%	
NBFI	10.41	10.13	0.03	0.03	2.9%	8121.55	8183.12	3.24%	3.26%	-0.8%	
Paper & Printing	1.46	1.91	0.00	0.01	-23.8%	189.63	191.69	0.08%	0.08%	-1.1%	
Pharmaceuticals & Chemicals	60.51	63.38	0.17	0.17	-4.5%	40792.57	40842.95	16.27%	16.27%	-0.1%	
Power & Energy	37.41	41.71	0.10	0.11	-10.3%	34010.94	33936.51	13.57%	13.52%	0.2%	
Service & Real Estate	9.89	12.98	0.03	0.03	-23.8%	1987.00	1992.39	0.79%	0.79%	-0.3%	
Tannery	7.17	3.83	0.02	0.01	87.3%	2400.64	2385.86	0.96%	0.95%	0.6%	
Telecommunication	7.33	7.78	0.02	0.02	-5.8%	35758.76	36082.21	14.27%	14.37%	-0.9%	
Textile	24.11	21.95	0.07	0.06	9.8%	7755.93	7758.91	3.09%	3.09%	0.0%	
Travel & Leisure	5.78	5.59	0.02	0.01	3.5%	2080.23	2103.79	0.83%	0.84%	-1.1%	

MC= Market Capitalization, % Δ in Turnover= change in turnover from last day, % Δ in MC= change in Market cap from last day

Index Movers	Index Shakers	Sector wise P/E (Fd.)			
UPGDCL	GP	Bank	9.14	NBFI	38.75
BERGERPBL	TITASGAS	Cement	34.60	Paper & Printing	81.13
MJLBD	LAFSURCEML	Ceramics	43.76	Pharmaceuticals & Chemicals	27.70
OLYMPIC	BRACBANK	Engineering	29.38	Power & Energy	15.81
UCB	SQURPHARMA	Food & Allied Product	30.68	Service & Real Estate	40.50
SINGERBD	RUPALIBANK	Insurance	15.97	Tannery	51.54
KPCL	DESCO	IT	22.90	Telecommunication	26.74
BSRMLTD	HEIDELBCEM	Jute	61.24	Textile	18.34
AFTABAUTO	DUTCHBANGL	Miscellaneous	35.78	Travel & Leisure	18.05
POPULARLIF	BSCCL				

Important News

Company News:

APEXTANRY: Agreement Signing:The Company has informed that they have signed an agreement with the Bangladesh Small and Cottage Industries Corporation (BSCIC), Govt. of Bangladesh to receive an amount of Tk. 2,00,81,073.00 as first installment out of total Tk. 10,04,05,367.45 for the purpose of shifting compensation from Hazaribagh to Savar.

BSRMSLTD: Starting of commercial production after completion of BMRE: The Company has informed that the Board of Directors has declared for starting its commercial production of the Rolling Unit of the Company after successful completion of BMRE and trial production, with effect from December 09, 2015.

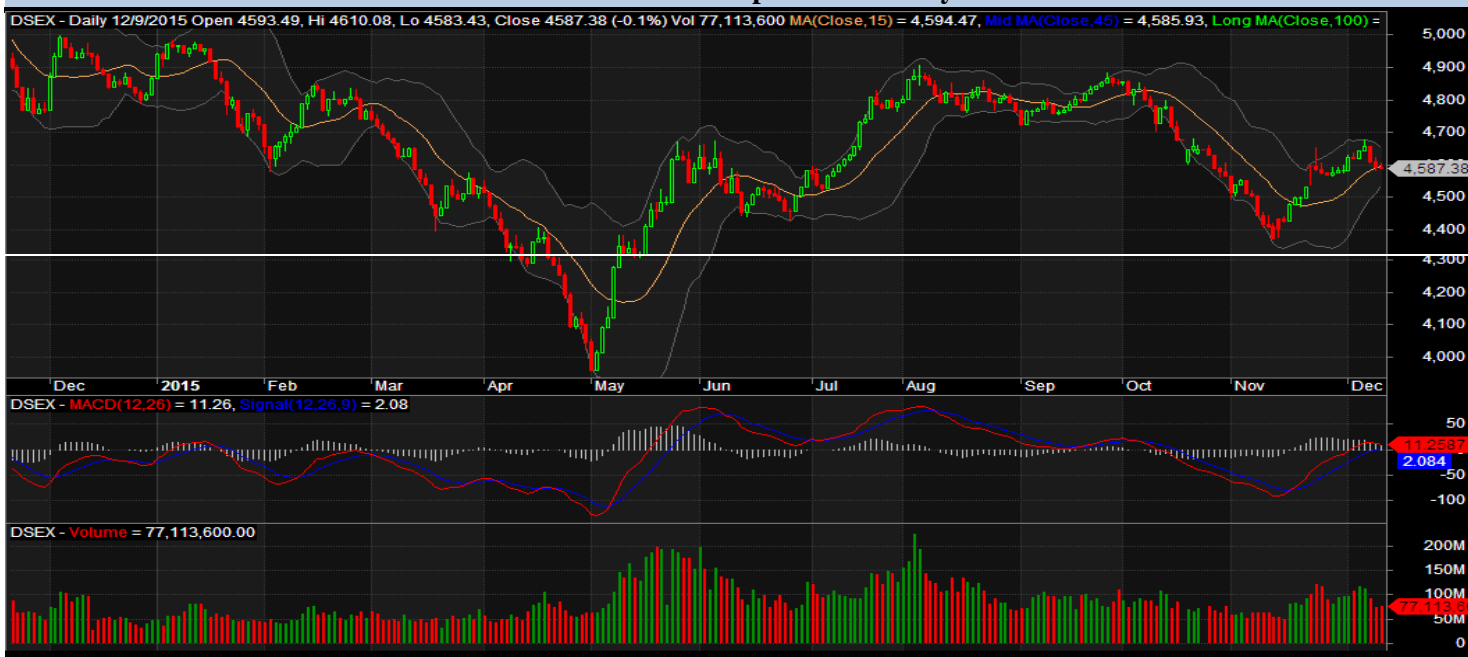
KEYACOSMET: Dividend Declaration and increase of Authorized Capital: The Board of Directors has recommended 20% stock dividend for the year ended on June 30, 2015. The Board has also decided to increase the Authorized Capital of the Company from Tk. 650.00 crore to Tk. 750.00 crore by amending the Clause - V (Uma) of the Memorandum of Association and Clause - 5 of the Articles of Association subject to approval of shareholders in the AGM

Recent Dividend Declaration

Ticker	Dividend	Record Date
Meghna Petroleum Limited	105%C	22.12.15
Jamuna Oil Company Limited	100%C	28.12.15

Note: C= cash Dividend, B= Bonus Dividend, R=Right, N/A=NotApplicable

DSEX Technical Graph for last year



MTB CAPITAL LIMITED

Corporate head office

Level: 3, MTB Tower, 111, Kazi Nazrul Islam Avenue, Dhaka

Phone: 8321714, Fax: 8321543

www.mtbcap.com

A Mutual Trust Bank Company

you can invest with us

Disclaimer

This report has been prepared by the MTB Capital Limited (MTBCL) on the basis of available information in the market and it is provided for the purposes only. It is not to be used as an offer for buying or selling any instruments. If anyone takes any action relying on this information, shall be responsible solely by him/her self for any consequences. The best care has been taken to make the report informative. MTBCL doesn't give any warrant or guarantee that the report or such information is fully accurate. The information that are provided here is the exclusive property of MTBCL and can not be distributed without prior consent of MTBCL.