

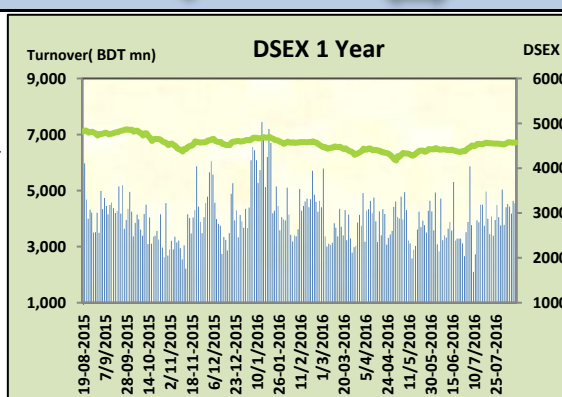
Today's Market Overview



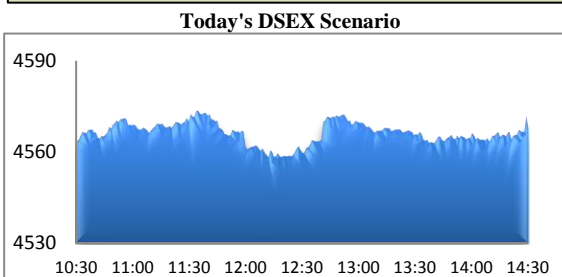
Tuesday, August 09, 2016

DSEX	4,567.69	-0.03%	Issues Traded	↑ Advanced	↓ Declined	↔ Unchanged
Turnover (BDT mn)	4,540.43	-2.00%		134	132	59

Market continued the flat movement for the consecutive three trading sessions with a slightly declined turnover. The premier bourse of the nation opened with a positive mood but during the midsession observed a huge sale pressure from the marginal sellers but then a recovery stance took place and lastly ended in flat zone. Market just portrayed the exact picture of the yesterday's behavior. Interestingly market observed top ten volume consisted of some big cap stocks which actually indicated investors are with the market and 4.5 billion above turnover motivated investors to remain with the market. Most of the major sectors observed marginal performances and notable concentration occurred in NBI, Power & Pharmaceuticals. Small cap stocks observed offloading tendency. Other two indices DS30 & DSES the shariah based index performed marginally poor. Jute was the best gainer followed by NBFI & Engineering while Telecom was the worst loser followed by Service & Travel.



The general gauge DSEX ended at 4567.69 with a decline of -0.03% which cut only 1.44 points from the broad DSEX. The Turnover declined slightly by -2.0% which was only 92 Million BDT poorer than that of previous day and finally finished the mark at 4540.43 million BDT. A total of 134 issues advanced with 132 declined & 59 remained unchanged. Sectors that improved were: Bank (+0.17%) Cement (+0.25%) Engineering (+0.91%) Food (+0.16%) IT (+0.14%) Jute (+3.19%) NBFI (+0.71%) Paper (+1.16%) Tannery (+0.44%) Textiles (+0.09%) & Sectors that declined were: Ceramics (-0.22%) Insurance (-0.32%) Mutual Fund (-0.13%) Pharmaceuticals (-0.07%) Service (-0.70%) Power (-0.41%) Telecom (-2.63%) Travel (-0.54%).



DBH topped in the Volume chart with a turnover of 25.44 BDT crore. ZEALBANGLA ranked top in gainer chart with a price hike of +9.9% and PRIMELIFE topped in the loser chart with a decline of -9.5% from its prevailing price. BSRMSTEEL led the way in the index mover chart while GP played the shatter part.

Index Scenario				Market Highlights				
	INDEX	Change	% Changes	DSEX 52 week H/L	4874/3960	Market P/E (LTM)	14.84	
DSEX	4567.69	(1.44)	-0.03%	DSEX Week H/L	4576/4525	M.Cap	3228681.3	
DSES	1118.93	(2.20)	-0.20%	Group Performances				
DS30	1783.05	(2.61)	-0.15%	Category	Mkt Cap (mn.)	Δ % M.Cap	Turnover BDT (mn)	Δ % Turnover
Turnover Scenario				Group A	2,463,447.85	-0.4%	4,086.21	4.3%
Today's Turnover (mn.)	Change In BDT (mn.)	% Change		Group B	10,651.69	-0.3%	79.81	-24.5%
4540.43	(92)	-2.00%		Group N	65,423.07	-2.5%	257.67	-6.1%
				Group Z	38,520.93	0.3%	53.87	-1.8%

Top Ten Volume (in BDT. crore)										
Stock	TT	YT	AT	% Δ in Turnover	TT/AT	CP	YP	% Δ P	Number of shares	Public Holding
DBH	25.44	13.17	12.27	93.2%	107.3%	114.2	110.6	3.3%	274,244,180.0	9%
TITASGAS	21.43	13.80	9.32	55.2%	130.0%	47.8	49.7	-3.8%	362,944,698.6	5%
MJLBD	20.07	9.46	12.47	112.2%	61.0%	110.2	107.7	2.3%	15,218,280.0	19%
BSRMSTEEL	16.45	15.31	5.43	7.4%	202.7%	103.7	101.2	2.5%	341,775,000.0	13%
BSRMLTD	15.98	11.24	14.10	42.2%	13.3%	165.8	164.5	0.8%	190,686,141.8	9%
SQURPHARMA	14.08	7.30	10.11	92.8%	39.2%	271.8	271.9	0.0%	276,739,950.1	61%
MITHUNKNIT	8.26	6.74	1.61	22.4%	412.3%	65	63.7	2.0%	137,132,037.0	19%
IPDC	8.09	4.97	5.37	62.6%	50.7%	32.5	31.6	2.8%	190,417,988.2	27%
LAFSURCEML	7.68	6.70	7.38	14.7%	4.0%	76	75.6	0.5%	294,400,000.0	24%
ACMELAB	6.79	10.25	15.08	-33.8%	-55.0%	112.8	113.5	-0.6%	54,285,000.0	38%

TT= Today's Turnover in crore, YT= Yesterday's Turnover in Crore, AT= Average of Last 20 day's Turnover, CP= Current Price, YP= Yesterday's Price, % Δ P= percentage change in price

**Top Ten Gainer****Top Ten Loser**

Stock	CP	YP	AP	% Δ P	% Δ in P from AP	Stock	CP	YP	AP	% Δ P	% Δ in P from AP
ZEALBANGLA	19.9	18.1	12.7	9.9%	56.7%	PRIMELIFE	56.90	62.90	60.95	-9.5%	-6.6%
SHYAMPSUG	14.6	13.3	9.01	9.8%	62.0%	EXIM1STMF	7.70	8.20	7.50	-6.1%	2.7%
MEGHNAPEP	8	7.3	5.47	9.6%	46.3%	GEMINISEA	1,280.10	1,358.70	1,172.94	-5.8%	9.1%
AMBEEPHA	410.6	377.6	325.63	8.7%	26.1%	MODERNDYE	138.60	145.10	156.12	-4.5%	-11.2%
RENWICKJA	799.2	743.5	511.685	7.5%	56.2%	IFILISLMF1	6.60	6.90	6.89	-4.3%	-4.1%
RAHIMAFOOD	25.1	56.8	55.385	-55.8%	-54.7%	RELIANCE1	7.40	7.70	8.08	-3.9%	-8.4%
KOHINOOR	445.4	417.5	386.885	6.7%	15.1%	TITASGAS	47.80	49.70	49.20	-3.8%	-2.8%
PRIMETEX	20	18.9	17.495	5.8%	14.3%	NITOLINS	21.50	22.30	21.95	-3.6%	-2.1%
SAVAREFR	51.4	48.7	45.06	5.5%	14.1%	FINEFOODS	8.50	8.80	8.81	-3.4%	-3.5%
BDAUTOCA	40	38	37.01	5.3%	8.1%	ALLTEX	20.00	20.60	18.92	-2.9%	5.7%

AP= Average Price of last 20 day,% Δ in P from AP= percentage change in price from the 20-day average price

Industry /Sectors overview (Amounts in BDT. Crore)

Sector	Trade Volume		MKT Turnover %		% Δ in Turnover	Market Capitalization		% of Total MC		% Δ in MC
	Today	Yesterday	Today	Yesterday		Today	Yesterday	Today	Yesterday	
Bank	29.92	33.82	0.07	0.08	-11.54%	41543.01	41474.49	16.13%	16.05%	0.17%
Cement	18.17	17.12	0.04	0.04	6.14%	14845.54	14808.18	5.76%	5.73%	0.25%
Ceramics	2.53	3.38	0.01	0.01	-25.22%	2332.48	2337.74	0.91%	0.90%	-0.22%
Engineering	85.06	94.81	0.19	0.22	-10.28%	15978.46	15834.06	6.20%	6.13%	0.91%
Food & Allied Product	18.35	20.34	0.04	0.05	-9.79%	24002.83	23963.92	9.32%	9.27%	0.16%
Insurance	4.86	5.84	0.01	0.01	-16.87%	6467.47	6488.35	2.51%	2.51%	-0.32%
IT	4.27	5.59	0.01	0.01	-23.55%	894.90	893.63	0.35%	0.35%	0.14%
Jute	3.76	4.30	0.01	0.01	-12.61%	119.91	116.21	0.05%	0.04%	3.19%
Miscellaneous	30.69	31.15	0.07	0.07	-1.49%	8551.34	8545.31	3.32%	3.31%	0.07%
Mutual Fund	6.66	7.56	0.01	0.02	-12.00%	3956.31	3961.64	1.54%	1.53%	-0.13%
NBFI	41.85	26.63	0.09	0.06	57.18%	7898.99	7843.43	3.07%	3.04%	0.71%
Paper & Printing	1.25	1.07	0.00	0.00	16.96%	162.83	160.96	0.06%	0.06%	1.6%
Pharmaceuticals & Chemicals	57.00	54.62	0.13	0.12	4.37%	44454.64	44486.10	17.26%	17.22%	-0.07%
Power & Energy	83.08	67.67	0.19	0.15	22.77%	35212.34	35355.88	13.67%	13.68%	0.41%
Service & Real Estate	5.15	8.53	0.01	0.02	-39.62%	1552.25	1563.24	0.60%	0.60%	0.70%
Tannery	5.30	6.77	0.01	0.02	-21.67%	2312.43	2302.38	0.90%	0.89%	0.44%
Telecommunication	10.98	10.46	0.02	0.02	4.99%	37941.39	38965.35	14.73%	15.08%	-2.63%
Textile	37.58	37.48	0.08	0.09	0.26%	7459.20	7452.14	2.90%	2.88%	0.09%
Travel & Leisure	1.72	2.47	0.00	0.01	-30.31%	1835.47	1845.49	0.71%	0.71%	0.54%

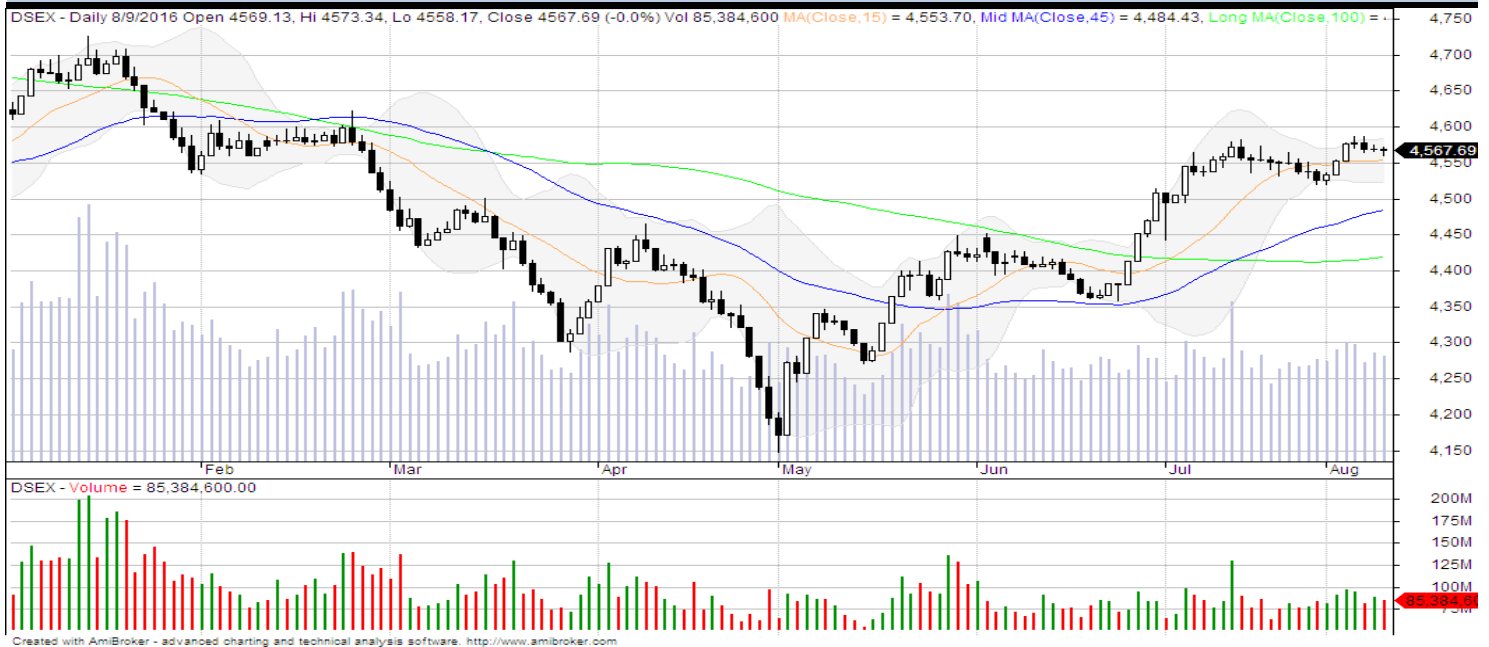
MC= Market Capitalization, % Δ in Turnover= change in turnover from last day, % Δ in MC= change in Market cap from last day

Index Movers	Index Shakers	Sector wise P/E (Fd.)			
BSRMSTEEL	GP	Bank	9.18	NBFI	14.13
MJLBD	TITASGAS	Cement	34.24	Paper & Printing	129.36
NBL	BXPHERMA	Ceramics	38.67	Pharmaceuticals & Chemicals	26.21
LAFSURCEML	ISLAMIBANK	Engineering	37.07	Power & Energy	17.18
DBH	DESCO	Food & Allied Product	26.85	Service & Real Estate	24.92
BATBC	BSCCL	Insurance	10.86	Tannery	38.30
KOHINOOR	GLAXOSMITH	IT	41.20	Telecommunication	24.25
BSRMLTD	PRIMELIFE	Jute	689.61	Textile	16.35
SUMITPOWER	PADMAOIL	Miscellaneous	17.74	Travel & Leisure	20.23
DOREENPWR	JAMUNAOIL				

Important News**Recent Dividend Declaration****Company News:**

Ticker	Dividend	Record Date
Sandhani Life Insurance Co. Limited	25%B	14.08.2016

Note: C= cash Dividend, B= Bonus Dividend, R=Right, N/A=NotApplicable

DSEX Technical Graph for last one year**MTB CAPITAL LIMITED**

Corporate head office

Level: 3, MTB Tower, 111, Kazi Nazrul Islam Avenue, Dhaka

Phone: 8321714, Fax: 8321543

www.mtbcap.com*A Mutual Trust Bank Company**you can invest with us***Disclaimer**

This report has been prepared by the MTB Capital Limited (MTBCL) on the basis of available information in the market and it is provided for the purposes only. It is not to be used as an offer for buying or selling any instruments. If anyone takes any action relying on this information, shall be responsible solely by him/her self for any consequences. The best care has been taken to make the report informative. MTBCL doesn't give any warrant or guarantee that the report or such information is fully accurate. The information that are provided here is the exclusive property of MTBCL and can not be distributed without prior consent of MTBCL.