

Today's Market Overview

Wednesday, March 16, 2016

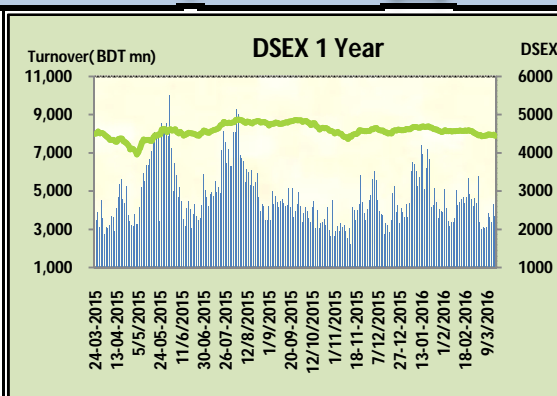


DSEX	4,446.29	-0.66%	Issues Traded	Advanced	Declined	Unchanged
Turnover (BDT mn)	3,707.47	-14.78%		113	148	47

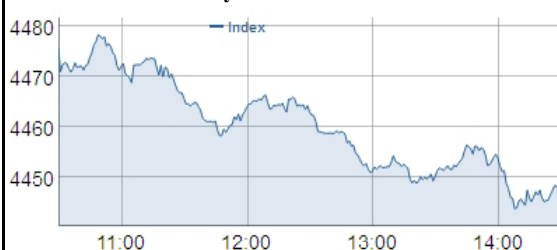
Market bounced back in dipped red zone after yesterday's upturn with a very sluggish turnover. The premier bourse of the nation opened with a negative mood and it continued the same mood till the closure. Market didn't try for once to recover moreover it intensified losing speed with the progression of time. Investors remained very cautious as recent several changes in Bangladesh Bank's management body created some hope but market couldn't explode as there was no back up from institutional investors. Participation level was very poor and crossed only 3.5 billion mark. All sorts of sector were loser moreover some price sensitive news regarding amalgamation and dividend of power sectors couldn't reflect positively. Investors from Food, Power & Engineering were very harsh with their holding while Textiles somehow tried to give comfort. Among the other two indices DS30 & DSES the shariah based index both performed poor. Travel was the best gainer followed by Paper & Textiles.

The general gauge DSEX ended at 4446.29 with a decline of -0.7% which cut 29.61 points from the broad DSEX. The Turnover declined heavily by -14.8% which was 643 Million BDT poorer than that of previous day and finally finished the mark at 3707.47 million BDT. A total of 113 issues advanced with 148 declined and 47 remained unchanged. Sectors that improved were: Miscellaneous (+0.1%) Paper (+0.7%) (+1.6%) Textile (+0.5%) Travel (+1.0%) & Sectors that declined were: Bank (-0.8%) Cement (-0.1%) Engineering (-1.3%) Food (-2.1%) IT (-1.5%) NBFI (-0.9%) Pharmaceuticals (-0.4%) Power (-1.3%) Service (-0.8%) Telecom (-0.8%)

SUMITPOWER topped in the Volume chart with a turnover of 17.76 BDT crore. MIRACLEIND ranked top gainer chart with a price hike of +7.1% and UCB topped in the loser chart with a decline of -14.1% from its prevailing price. EBL led the way in the index mover chart while BATBC played the shatter part.



Today's DSEX Scenario



Index Scenario				Market Highlights				
INDEX	Change	% Changes		DSEX 52 week H/L	4992/3960	Market P/E (LTM)	13.80	
DSEX	4446.29	(29.61)	-0.7%	DSEX Week H/L	4485/4446	M.Cap (mn)	3099868.3	
DSES	1080.45	(6.94)	-0.6%	Group Performances				
DS30	1693.30	(20.04)	-1.2%	Category	Mkt Cap (mn.)	Δ % M.Cap	Turnover BDT (mn)	Δ % Turnover
Turnover Scenario				Group A	2,352,027.28	-0.8%	3,127.38	-14.0%
Today's Turnover (mn.)	Change In BDT (mn.)	% Change		Group B	11,979.08	0.6%	77.49	40.3%
3707.47	(643)	-14.8%		Group N	36,795.39	0.3%	321.00	-19.0%
				Group Z	34,059.96	0.6%	106.53	13.1%

Top Ten Volume (in BDT. crore)										
Stock	TT	YT	AT	% Δ in Turnover	TT/AT	CP	YP	% Δ P	Number of shares	Public Holding
SUMITPOWER	17.76	8.73	8.47	103.5%	109.5%	38.4	41.7	-7.9%	714,284,847.2	15%
AFCAGRO	13.19	17.23	3.69	-23.5%	257.2%	74.4	73.3	1.5%	63,250,000.0	57%
ALLTEX	12.49	10.15	5.07	23.1%	146.4%	29.7	28.1	5.7%	55,968,000.0	51%
LANKABAFIN	11.84	26.35	21.45	-55.0%	-44.8%	33.1	34.9	-5.2%	240,643,434.9	61%
AMANFEED	10.02	14.73	10.64	-32.0%	-5.9%	71.1	68.5	3.8%	80,000,000.0	23%
ORIONINFU	9.20	14.87	2.90	-38.2%	216.7%	65.8	64.1	2.7%	20,359,760.0	33%
SPPCL	8.90	4.37	2.47	103.6%	260.1%	52.6	57.4	-8.4%	151,980,704.0	21%
OAL	8.24	4.01	2.68	105.3%	207.7%	36.4	35.8	1.7%	125,093,700.0	68%
SPCL	8.13	1.88	2.72	332.8%	198.5%	114.9	111.1	3.4%	137,132,037.0	19%
ORIONPHARM	8.00	13.18	10.07	-39.3%	-20.5%	40.3	41.4	-2.7%	234,000,000.0	44%

TT= Today's Turnover in crore, YT= Yesterday's Turnover in Crore, AT= Average of Last 20 day's Turnover, CP= Current Price, YP= Yesterday's Price, % Δ P= percentage change in price

Top Ten Gainer						Top Ten Loser					
Stock	CP	YP	AP	% Δ P	% Δ in P from AP	Stock	CP	YP	AP	% Δ P	% Δ in P from AP
MIRACLEIND	30.3	28.3	29.355	7.1%	3.2%	UCB	17.60	20.50	20.31	-14.1%	-13.3%
ALLTEX	29.7	28.1	27.015	5.7%	9.9%	SPPCL	52.60	57.40	56.41	-8.4%	-6.7%
EBL	27.8	26.4	28.38	5.3%	-2.0%	KAY&QUE	19.00	20.70	19.90	-8.2%	-4.5%
MICEMENT	81.7	78.1	78.52	4.6%	4.0%	SUMITPOWEF	38.40	41.70	41.60	-7.9%	-7.7%
MIDASFIN	19.3	18.5	17.45	4.3%	10.6%	PROGRESLIF	60.20	63.90	61.89	-5.8%	-2.7%
FUWANGCER	17.9	17.2	17.185	4.1%	4.2%	LANKABAFIN	33.10	34.90	36.92	-5.2%	-10.3%
KEYACOSMET	13.3	12.8	11.845	3.9%	12.3%	DUTCHBANGI	92.80	96.90	98.51	-4.2%	-5.8%
CMCKAMAL	21.7	20.9	20.37	3.8%	6.5%	LRGLOBMF1	5.00	5.20	5.04	-3.8%	-0.7%
7THICB	116.9	112.6	110.525	3.8%	5.8%	BSRMLTD	156.40	162.50	179.61	-3.8%	-12.9%
AMANFEED	71.1	68.5	58.54	3.8%	21.5%	MODERNDYE	80.30	83.10	85.60	-3.4%	-6.2%

AP= Average Price of last 20 day,% Δ in P from AP= percentage change in price from the 20-day average price

Industry /Sectors overview (Amounts in BDT. Crore)											
Sector	Trade Volume		MKT Turnover %		% Δ in Turnover	Market Capitalization		% of Total MC		% Δ in MC	
	Today	Yesterday	Today	Yesterday		Today	Yesterday	Today	Yesterday		
Bank	23.86	23.47	0.07	0.06	1.7%	37785.79	38094.30	15.55%	15.55%	-0.8%	
Cement	16.34	20.01	0.05	0.05	-18.3%	14443.04	14462.91	5.94%	5.90%	-0.1%	
Ceramics	6.80	4.21	0.02	0.01	61.8%	2630.10	2642.85	1.08%	1.08%	-0.5%	
Engineering	56.97	70.48	0.16	0.17	-19.2%	15036.63	15233.94	6.19%	6.22%	-1.3%	
Food & Allied Product	11.56	15.16	0.03	0.04	-23.8%	22360.28	22838.26	9.20%	9.32%	-2.1%	
Insurance	8.16	11.48	0.02	0.03	-28.9%	7406.08	7420.89	3.05%	3.03%	-0.2%	
IT	6.04	6.95	0.02	0.02	-13.1%	956.17	970.66	0.39%	0.40%	-1.5%	
Jute	0.49	0.49	0.00	0.00	-0.5%	82.91	83.38	0.03%	0.03%	-0.6%	
Miscellaneous	24.80	33.04	0.07	0.08	-24.9%	8401.63	8395.19	3.46%	3.43%	0.1%	
Mutual Fund	2.21	2.33	0.01	0.01	-5.1%	3636.40	3648.40	1.50%	1.49%	-0.3%	
NBFI	19.83	37.20	0.06	0.09	-46.7%	8038.60	8111.43	3.31%	3.31%	-0.9%	
Paper & Printing	0.40	0.36	0.00	0.00	11.5%	186.07	184.80	0.08%	0.08%	0.7%	
Pharmaceuticals & Chemicals	59.08	81.85	0.16	0.20	-27.8%	41152.40	41304.76	16.93%	16.86%	-0.4%	
Power & Energy	63.99	48.62	0.18	0.12	31.6%	32923.50	33352.57	13.55%	13.61%	-1.3%	
Service & Real Estate	3.83	7.94	0.01	0.02	-51.8%	1742.09	1756.89	0.72%	0.72%	-0.8%	
Tannery	0.56	1.19	0.00	0.00	-52.6%	2220.21	2233.77	0.91%	0.91%	-0.6%	
Telecommunication	6.59	7.17	0.02	0.02	-8.0%	34034.39	34317.02	14.00%	14.01%	-0.8%	
Textile	42.94	37.42	0.12	0.09	14.7%	7981.88	7941.02	3.28%	3.24%	0.5%	
Travel & Leisure	3.95	4.86	0.01	0.01	-18.6%	2007.81	1987.20	0.83%	0.81%	1.0%	

MC= Market Capitalization, % Δ in Turnover= change in turnover from last day, % Δ in MC= change in Market cap from last day

Index Movers	Index Shakers	Sector wise P/E (Fd.)			
EBL	BATBC	Bank	8.40	NBFI	42.96
ISLAMIBANK	UCB	Cement	30.70	Paper & Printing	98.48
MICEMENT	GP	Ceramics	34.68	Pharmaceuticals & Chemicals	27.27
SPCL	SUMITPOWER	Engineering	55.84	Power & Energy	15.74
MJLBD	UPGDCL	Food & Allied Product	28.66	Service & Real Estate	31.05
POWERGRID	BSRMLTD	Insurance	13.07	Tannery	54.13
AMANFEED	OLYMPIC	IT	93.23	Telecommunication	26.92
UNIQUEHRL	DUTCHBANGL	Jute	151.19	Textile	17.42
PREMIERCEM	LAFSURCEML	Miscellaneous	34.12	Travel & Leisure	21.24
MPETROLEUM	TITASGAS				

Important News

Company News:

MTB: Dividend Declaration: The Board of Directors has recommended 20% stock dividend for the year ended on December 31, 2015. Date of AGM: 25.04.2016, Time: 10:00 AM, Venue: International Convention City Bashundhara (Pushpogusso), Juar Sahara, Khilkhet, Dhaka. Record Date: 05.04.2016. The Company has also reported EPS of Tk. 3.70, NAV per share of Tk. 24.18 and NOCFPS of Tk. 11.58 for the year ended on December 31, 2015 as against Tk. 2.60 (restated), Tk. 22.00 and Tk. (4.57) respectively for the year ended on December 31, 2014.

SUMITPOWER: Dividend Declaration: The Board of Directors has recommended 12% cash and 6% stock dividend for the year ended on December 31, 2015. Date of AGM: 27.04.2016, Time: 10:30 AM, Venue: Krisibid Institute Complex BD. (KIB), Krishi Khamar Sarak (Khamarbari) Farmgate, Dhaka-1215. Record Date: 05.04.2016. The Company has also reported EPS of Tk. 3.76, NAV per share of Tk. 28.73 and NOCFPS of Tk. 4.46 for the year ended on December 31, 2015.

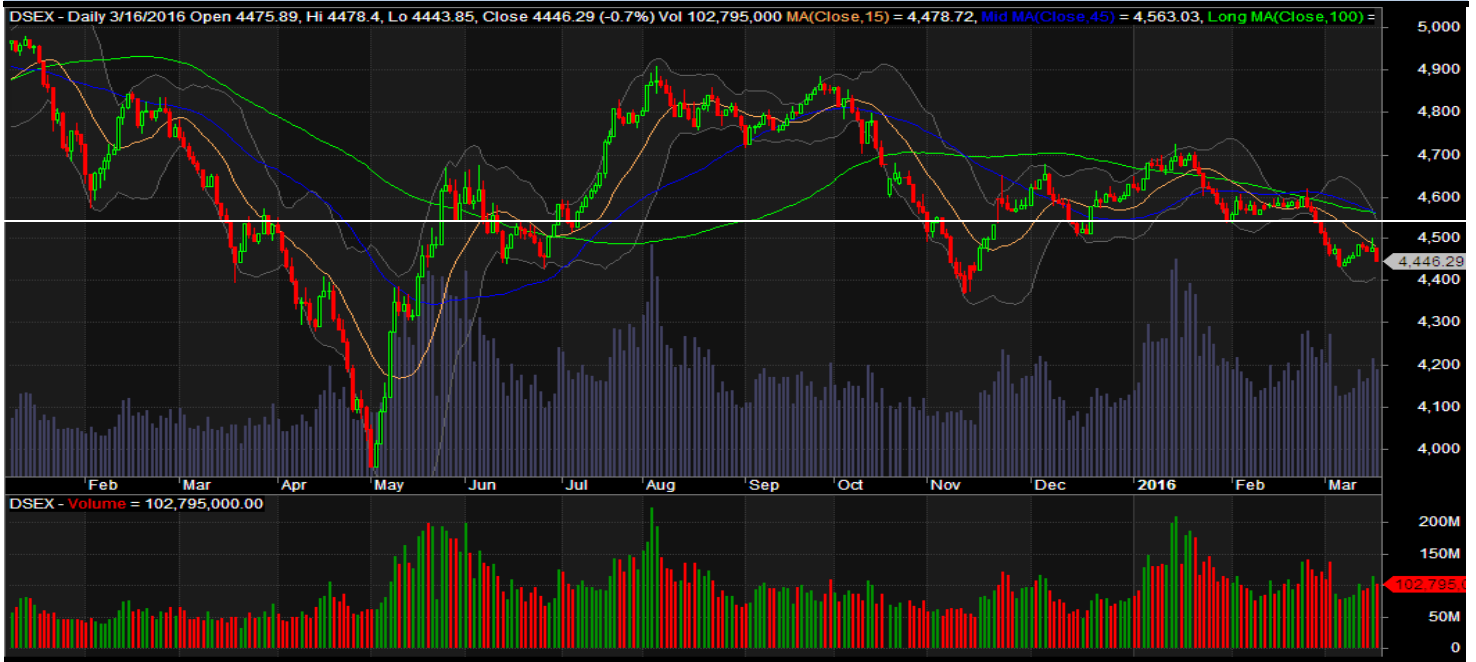
SPPCL: Dividend Declaration: The Board of Directors has recommended 25% cash dividend for the year ended on December 31, 2015. Date of AGM: 27.04.2016, Time: 10:00 AM, Venue: Krisibid Institute Complex BD. (KIB), Krishi Khamar Sarak (Khamarbari) Farmgate, Dhaka-1215. Record Date: 05.04.2016. The Company has also reported EPS of Tk. 5.23, NAV per share of Tk. 32.22 and NOCFPS of Tk. 6.39 for the year ended on December 31, 2015.

Recent Dividend Declaration

Ticker	Dividend	Record Date
Phoenix Finance and Investments Ltd.	20% C	31.03.16
Summit Alliance Port Ltd.	10% B	21.03.16

Note: C= cash Dividend, B= Bonus Dividend, R=Right, N/A=NotApplicable

DSEX Technical Graph for last one year



MTB CAPITAL LIMITED

Corporate head office

Level: 3, MTB Tower, 111, Kazi Nazrul Islam Avenue, Dhaka

Phone: 8321714, Fax: 8321543

www.mtbcap.com

A Mutual Trust Bank Company

you can invest with us

Disclaimer

This report has been prepared by the MTB Capital Limited (MTBCL) on the basis of available information in the market and it is provided for the purposes only. It is not to be used as an offer for buying or selling any instruments. If anyone takes any action relying on this information, shall be responsible solely by him/her self for any consequences. The best care has been taken to make the report informative. MTBCL doesn't give any warrant or guarantee that the report or such information is fully accurate. The information that are provided here is the exclusive property of MTBCL and can not be distributed without prior consent of MTBCL.