

Today's Market Overview

Tuesday, October 06, 2015

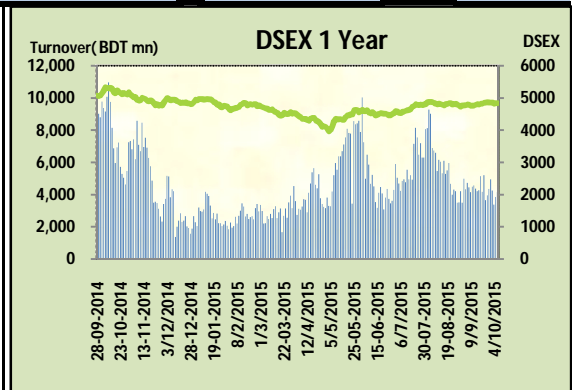


DSEX	4,833.33	0.04%	Issues Traded	Advanced	Declined	Unchanged
Turnover (BDT mn)	4,148.35	7.9%		109	173	41

Market ended in the flat zone with a slightly improved turnover. After two trading days turnover managed to cross the 4 billion mark. Market opened with a very positive mood but couldn't sustain for an hour but again it tried to recover it. Last hour sale pressure on some big cap stocks bound the market to settle in flat zone. Investors witnessed a feeble market except the banking sector and most of the investors off loaded their existing sector to take position in banking sector with a expectation of better third quarter earnings from this sector as macroeconomic aspects are in favor of this sector. Among the other two indices DS30 somehow closed in marginal gaining position while DSES the shariah based index ill performed today. Most of the major sectors were loser except Bank & Ceramics. Service was the worst loser followed by Cement & Engineering

The general gauge DSEX ended at 4833 with an advance of +0.03% which added 1.74 points to the broad DSEX. The Turnover advanced slightly by +7.9% which was only 302 Million BDT healthier than that of previous day and finally finished the mark at 4148 million BDT. A total of 109 issues advanced with 173 declined and 41 remained unchanged. Sectors that improved were Bank (+1.1%) Ceramics (+2.2%) Food (+0.5%) & sectors that declined were: Cement (-1.1%) Engineering (-1.0%) Telecom (-0.3%) Service (-2.7%) Textile (-0.9%) Power (-0.6%) Pharmaceuticals (-0.4%).

BXPHARMA topped in the Volume chart with a turnover of 34.48 BDT crore. JUTESPINN ranked top gainer chart with a price hike of +8.50% and TALLUSPIN topped in the loser chart with a decline of -6.7% from its prevailing price. BRACBANK led the way in the index mover chart while LAFSURCEML played the shatter part.



Index Scenario				Market Highlights				
INDEX	Change	% Changes		DSEX 52 week H/L	5334/3960	Market P/E (LTM)	15.77	
DSEX	4833.33	1.74	0.0%	DSEX Week H/L	4857/4814	M.Cap (mn)	3334704.5	
DSES	1168.15	(2.76)	-0.2%	Group Performances				
DS30	1842.87	2.70	0.1%	Category	Mkt Cap (mn.)	Δ % M.Cap	Turnover BDT (mn)	Δ % Turnover
Turnover Scenario				Group A	2,602,836.29	-0.2%	3,615.23	3.1%
Today's Turnover (mn.)	Change In BDT (mn.)	% Change		Group B	14,273.76	0.1%	74.71	1.4%
4148.35	302	7.9%		Group N	28,997.38	-1.7%	112.78	-14.0%
				Group Z	25,236.55	0.2%	38.53	17.5%

Top Ten Volume (in BDT. crore)										
Stock	TT	YT	AT	% Δ in Turnover	TT/AT	CP	YP	% Δ P	Number of shares	Public Holding
BXPHARMA	34.48	25.17	12.91	37.0%	167.1%	75	74	1.4%	386,244,234.6	50%
SAIFPOWER	14.80	9.80	8.74	51.0%	69.3%	88.1	91.8	-4.0%	70,985,380.0	19%
SQURPHARMA	13.68	10.57	11.46	29.4%	19.3%	246.5	247.8	-0.5%	623,586,546.0	9%
BRACBANK	10.91	16.00	2.78	-31.8%	293.1%	46.4	44.4	4.5%	709,287,321.0	46%
GP	9.25	14.86	9.15	-37.7%	1.1%	275.2	276.1	-0.3%	1,350,300,022.0	4%
RAKCERAMIC	8.90	2.64	4.11	237.4%	116.6%	70.6	69	2.3%	336,850,610.0	12%
LAFSURCEML	8.83	8.23	9.84	7.3%	-10.3%	105	106.1	-1.0%	1,161,373,500.0	30%
TRUSTBANK	8.43	1.90	1.22	342.9%	592.3%	22.4	21.7	3.2%	468,826,782.6	19%
IFIC	8.32	2.03	2.58	309.0%	222.0%	23.7	23.2	2.2%	503,412,418.4	37%
FARCHEM	7.26	9.92	10.74	-26.8%	-32.4%	43.7	45.9	-4.8%	109,237,878.0	12%

TT= Today's Turnover in crore, YT= Yesterday's Turnover in Crore, AT= Average of Last 20 day's Turnover, CP= Current Price, YP= Yesterday's Price, % Δ P= percentage change in price

Top Ten Gainer						Top Ten Loser					
Stock	CP	YP	AP	% Δ P	% Δ in P from AP	Stock	CP	YP	AP	% Δ P	% Δ in P from AP
JUTESPINN	59.8	55.1	61.57	8.5%	-2.9%	TALLUSPIN	21.00	22.50	22.54	-6.7%	-6.8%
PROGRESLIF	64.7	60.1	62.44	7.7%	3.6%	MODERNDYE	156.30	166.70	157.62	-6.2%	-0.8%
GREENDELMF	5.2	4.9	4.59	6.1%	13.3%	4THICB	212.00	225.00	225.14	-5.8%	-5.8%
ISLAMICFIN	16.4	15.5	15.25	5.8%	7.5%	FARCHEM	43.70	45.90	50.39	-4.8%	-13.3%
7THICB	103	98.3	105.96	4.8%	-2.8%	SAIFPOWER	88.10	91.80	85.01	-4.0%	3.6%
RAHIMAFOOD	55.2	52.8	49.965	4.5%	10.5%	EXIMISTMF	5.00	5.20	5.22	-3.8%	-4.1%
BRACBANK		44.4	40.245		NM	ARAMITCEM	40.60	42.20	43.53	-3.8%	-6.7%
CONTININS	16.5	15.8	15.55	4.4%	6.1%	SINGERBD	158.70	164.90	165.51	-3.8%	-4.1%
MTB	19.1	18.3	17.82	4.4%	7.2%	ICB1STNRB	18.10	18.80	18.22	-3.7%	-0.7%
SPCERAMICS	12.5	12	11.255	4.2%	11.1%	SAFKOSPINN	18.60	19.30	20.54	-3.6%	-9.4%

AP= Average Price of last 20 day,% Δ in P from AP= percentage change in price from the 20-day average price

Industry /Sectors overview (Amounts in BDT. Crore)											
Sector	Trade Volume		MKT Turnover %		% Δ in Turnover	Market Capitalization		% of Total MC		% Δ in MC	
	Today	Yesterday	Today	Yesterday		Today	Yesterday	Today	Yesterday		
Bank	70.31	59.93	0.18	0.16	17.3%	41896.38	41447.13	15.71%	15.51%	1.1%	
Cement	16.79	15.83	0.04	0.04	6.1%	18691.48	18908.48	7.01%	7.08%	-1.1%	
Ceramics	10.23	3.55	0.03	0.01	188.3%	2822.02	2761.06	1.06%	1.03%	2.2%	
Engineering	46.31	44.90	0.12	0.12	3.2%	15219.59	15373.91	5.71%	5.75%	-1.0%	
Food & Allied Product	12.61	15.14	0.03	0.04	-16.7%	24327.11	24213.92	9.12%	9.06%	0.5%	
Insurance	4.10	5.00	0.01	0.01	-17.9%	7225.82	7212.64	2.71%	2.70%	0.2%	
IT	2.28	1.50	0.01	0.00	52.3%	548.48	552.00	0.21%	0.21%	-0.6%	
Jute	0.40	0.35	0.00	0.00	15.5%	99.03	99.74	0.04%	0.04%	-0.7%	
Miscellaneous	14.81	13.82	0.04	0.04	7.1%	9021.47	9021.07	3.38%	3.38%	0.0%	
Mutual Fund	7.92	6.83	0.02	0.02	16.1%	3509.37	3521.50	1.32%	1.32%	-0.3%	
NBFI	17.77	25.77	0.05	0.07	-31.0%	8488.86	8501.03	3.18%	3.18%	-0.1%	
Paper & Printing	0.46	0.61	0.00	0.00	-24.5%	222.16	224.25	0.08%	0.08%	-0.9%	
Pharmaceuticals & Chemicals	76.35	71.41	0.20	0.19	6.9%	41637.69	41809.09	15.61%	15.65%	-0.4%	
Power & Energy	40.55	40.43	0.11	0.11	0.3%	38852.41	39085.40	14.57%	14.63%	-0.6%	
Service & Real Estate	21.23	17.27	0.06	0.05	22.9%	2108.26	2167.08	0.79%	0.81%	-2.7%	
Tannery	5.09	5.75	0.01	0.02	-11.5%	2597.85	2590.42	0.97%	0.97%	0.3%	
Telecommunication	10.37	16.27	0.03	0.04	-36.3%	38782.33	38908.35	14.54%	14.56%	-0.3%	
Textile	20.48	23.45	0.05	0.06	-12.7%	8355.49	8433.45	3.13%	3.16%	-0.9%	
Travel & Leisure	6.18	7.23	0.02	0.02	-14.5%	2337.87	2342.39	0.88%	0.88%	-0.2%	

MC= Market Capitalization, % Δ in Turnover= change in turnover from last day, % Δ in MC= change in Market cap from last day

Index Movers	Index Shakers	Sector wise P/E			
BRACBANK	LAFSURCEML	Bank	9.16	NBFI	34.05
OLYMPIC	GP	Cement	36.70	Paper & Printing	75.20
RAKCERAMIC	SQURPHARMA	Ceramics	38.90	Pharmaceuticals & Chemicals	27.48
BANKASIA	SPCL	Engineering	38.15	Power & Energy	16.48
BXPBARMA	UPGDCL	Food & Allied Product	35.29	Service & Real Estate	44.09
RUPALBANK	HEIDELBCEM	Insurance	14.55	Tannery	35.38
TRUSTBANK	SINGERBD	IT	17.65	Telecommunication	24.01
UCBL	GLAXOSMITH	Jute	164.16	Textile	17.20
MTB	POWERGRID	Miscellaneous	36.25	Travel & Leisure	15.09
BSRMLTD	BSRMSTEEL				

Important News

Company News:

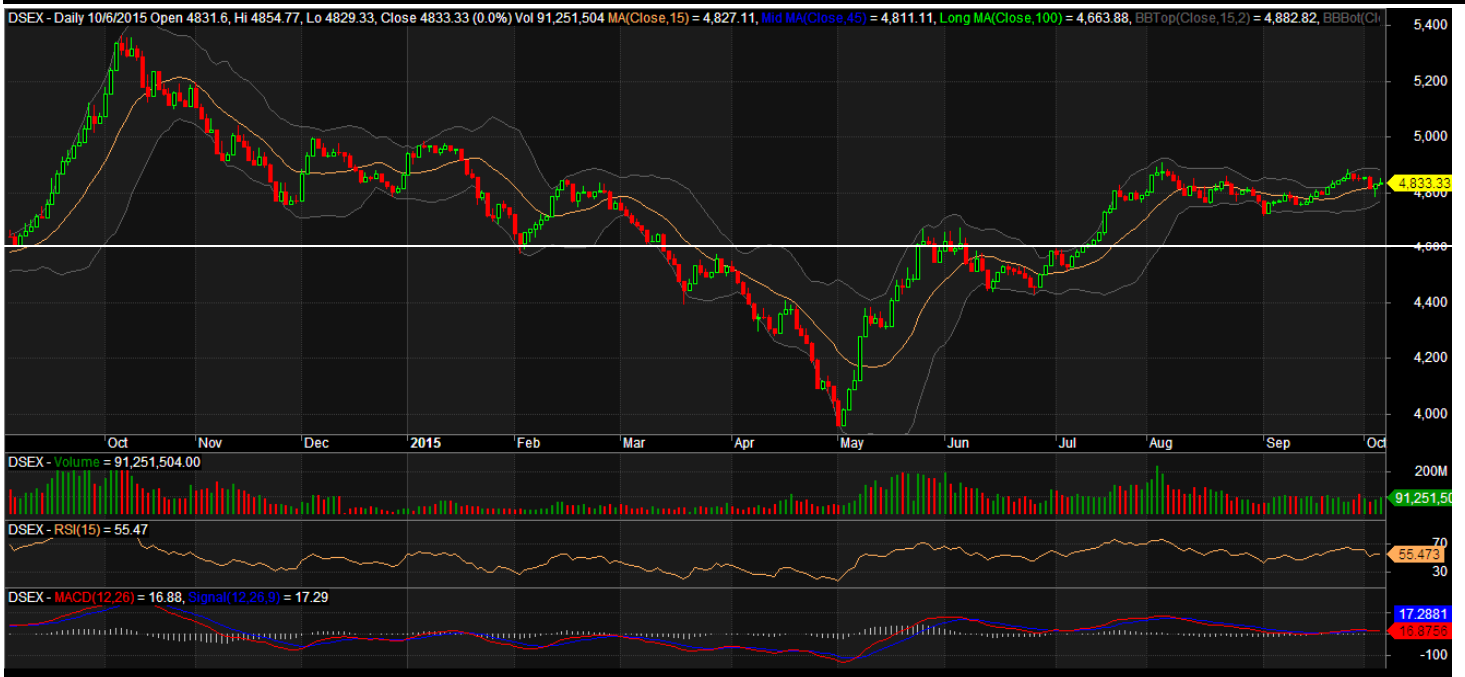
SINGERBD: Declaration of sale by Corporate Sponsor: Singer Bhold B. V., one of the Corporate Sponsors of the Company, has expressed its intention to sell 37,58,030 shares out of its total holding of 4,21,81,971 shares of the Company at prevailing market price through Stock Exchange within October 29, 2015.

Recent Dividend Declaration

Ticker	Dividend	Record Date
Matin Spinning Mills Ltd.	27% C	08.10.15
Premier Cement Mills Limited	20% C	18.10.15
SAIF Powertec Limited	29% B	15.10.15
Appollo Ispat Complex Limited	3% C & 12% B	14.10.15
Beach Hatchery Ltd.	5% B	28.10.15

Note: C= cash Dividend, B= Bonus Dividend, R=Right, N/A=NotApplicable

DSEX Technical Graph for last one year



MTB CAPITAL LIMITED

Corporate head office

Level: 3, MTB Tower, 111, Kazi Nazrul Islam Avenue, Dhaka

Phone: 8321714, Fax: 8321543

www.mtbcap.com

A mutual Trust Bank Company

you can invest with US

Disclaimer

This report has been prepared by the MTB Capital Limited (MTBCL) on the basis of available information in the market and it is provided for the purposes only. It is not to be used as an offer for buying or selling any instruments. If anyone takes any action relying on this information, shall be responsible solely by him/her self for any consequences. The best care has been taken to make the report informative. MTBCL doesn't give any warrant or guarantee that the report or such information is fully accurate. The information that are provided here is the exclusive property of MTBCL and can not be distributed without prior consent of MTBCL.