

Today's Market Overview

Tuesday, November 24, 2015

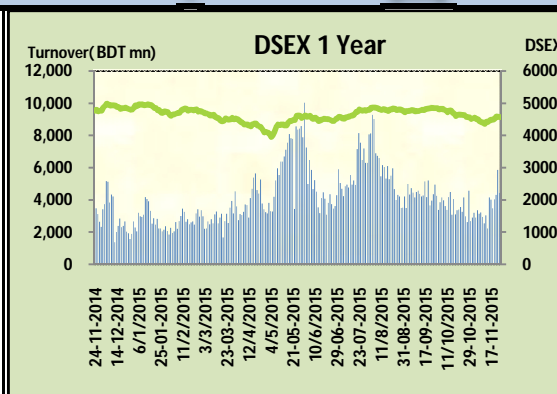


DSEX	4,574.06	-0.24%	Issues Traded	Advanced	Declined	Unchanged
Turnover (BDT mn)	4,430.34	-24.43%		74	212	35

Market behavior again perplexed and shaken the confidence of investors as market continued the losing streak for the consecutive two days with heavily declined turnover. The premier bourse of the nation opened with a positive mood but sustained only for an hour and lastly closed with negative note. Market played see-saw several times and that actually shown both the buoyancy and sale pressure was in the market, general investors were in buying mood but severity in some big cap stocks actually puzzled them and lastly they minimize their buying binge thus mow down the market. Most of the major & prominent sectors performed poor except Bank & NBFI and they helped to minimize the negativity space. Other two indices DS30 & DSES the shariah based index both ill performed today. IT & Jute was the worst loser followed by Service, Textiles & Cement.

The general gauge DSEX ended at 4575.06 with a decline of -0.2% which cut 11.05 points from the broad DSEX. The Turnover declined heavily by -24.4% which was 1433 Million BDT poorer than that of previous day and finally finished the mark at 4430.34 million BDT. A total of 74 issues advanced with 212 declined and 35 remained unchanged. Sectors that improved were: Bank (+1.3%) NBFI (+1.3%) & sectors that declined were: Cement (-1.1%) Ceramics (-0.7%) Engineering (-0.8%) Pharmaceuticals (-0.6%) Service (-1.6%) Power (-0.3%) Textiles (-1.4%) Telecom (-0.6%) Travel (-1.3%) Miscellaneous (-1.0%) IT (-2.0%)

SAIFPOWER topped in the Volume chart with a turnover of 20.95 BDT crore. ALARABANK ranked top gainer chart with a price hike of +9.7% and KBPPWBIL topped in the loser chart with a decline of 15.2% from its prevailing price. ALARABANK led the way in the index mover chart while GP played the shatter part.



Index Scenario				Market Highlights				
INDEX	Change	% Changes		DSEX 52 week H/L	5334/3960	Market P/E (LTM)	14.79	
DSEX	4574.06	(11.05)	-0.2%	DSEX Week H/L	4597/4496	M.Cap (mn)	3153280.2	
DSES	1102.83	(3.44)	-0.3%	Group Performances				
DS30	1733.03	(10.49)	-0.6%	Category	Mkt Cap (mn.)	Δ % M.Cap	Turnover BDT (mn)	Δ % Turnover
Turnover Scenario				Group A	2,440,134.28	-0.3%	3,839.08	-22.1%
Today's Turnover (mn.)	Change In BDT (mn.)	% Change		Group B	13,065.19	-1.3%	66.16	-38.4%
4430.34	(1,433)	-24.4%		Group N	32,855.34	-1.2%	355.97	-49.0%
				Group Z	23,746.44	-0.6%	40.11	6.3%

Top Ten Volume (in BDT. crore)										
Stock	TT	YT	AT	% Δ in Turnover	TT/AT	CP	YP	% Δ P	Number of shares	Public Holding
SAIFPOWER	20.95	19.18	11.18	9.2%	87.4%	71.9	72.8	-1.2%	91,571,140.2	19%
ALARABANK	20.47	4.69	1.70	336.3%	1105.0%	15.9	14.5	9.7%	946,958,501.0	47%
IFADAUTOS	16.12	17.85	18.93	-9.7%	-14.8%	105.4	106.3	-0.8%	149,500,000.0	17%
SUMITPOWER	15.31	10.18	2.59	50.4%	490.9%	38.5	37.3	3.2%	714,284,847.2	15%
BXPHARMA	13.43	22.83	9.85	-41.2%	36.3%	76.8	77.7	-1.2%	386,244,234.6	50%
TITASGAS	12.21	13.34	13.27	-8.4%	-8.0%	54.6	53.4	2.2%	989,221,831.0	25%
ONEBANKLTD	12.00	5.42	2.11	121.3%	469.1%	15.2	14.8	2.7%	589,924,914.8	50%
UPGDCL	10.12	16.89	6.80	-40.1%	48.9%	143.6	143.3	0.2%	362,944,698.6	5%
EMERALDOIL	8.12	5.81	4.22	39.8%	92.3%	54.6	51.9	5.2%	54,285,000.0	38%
QSMRDYCELL	8.03	8.46	7.23	-5.0%	11.0%	103.8	100.2	3.6%	36,799,488.0	54%

TT= Today's Turnover in crore, YT= Yesterday's Turnover in Crore, AT= Average of Last 20 day's Turnover, CP= Current Price, YP= Yesterday's Price, % Δ P= percentage change in price

Top Ten Gainer						Top Ten Loser					
Stock	CP	YP	AP	% Δ P	% Δ in P from AP	Stock	CP	YP	AP	% Δ P	% Δ in P from AP
ALARABANK	15.9	14.5	13.14	9.7%	21.0%	KBPPWBIL	21.70	25.60	22.41	-15.2%	-3.2%
EXIMISTMF	6	5.5	5.71	9.1%	5.1%	SAMATALETE	22.60	24.90	23.30	-9.2%	-3.0%
ICBIBANK	4.6	4.3	4.33	7.0%	6.2%	ICB1STNRB	16.90	18.00	17.67	-6.1%	-4.4%
STANCERAM	52	48.8	52.125	6.6%	-0.2%	IBNSINA	142.20	150.30	159.19	-5.4%	-10.7%
DBH	113.3	106.9	97.19	6.0%	16.6%	BEACONPHAF	14.30	15.00	14.99	-4.7%	-4.6%
EMERALDOIL	54.6	51.9	51.425	5.2%	6.2%	SAIHAMCOT	14.40	15.10	15.17	-4.6%	-5.0%
IPDC	30.8	29.5	25.535	4.4%	20.6%	PHARMAID	221.90	232.10	247.37	-4.4%	-10.3%
NHFIL	27.6	26.5	26.22	4.2%	5.3%	SPCERAMICS	11.00	11.50	10.87	-4.3%	1.2%
SIBL	13.5	13	12.855	3.8%	5.0%	TALLUSPIN	18.20	19.00	19.97	-4.2%	-8.8%
QSMRDYCELL	103.8	100.2	84.955	3.6%	22.2%	MODERNDYE	103.90	108.40	120.44	-4.2%	-13.7%

AP= Average Price of last 20 day,% Δ in P from AP= percentage change in price from the 20-day average price

Industry /Sectors overview (Amounts in BDT. Crore)											
Sector	Trade Volume		MKT Turnover %		% Δ in Turnover	Market Capitalization		% of Total MC		% Δ in MC	
	Today	Yesterday	Today	Yesterday		Today	Yesterday	Today	Yesterday		
Bank	72.78	39.19	0.17	0.07	85.7%	40825.29	40294.05	16.29%	16.02%	1.3%	
Cement	11.04	21.58	0.03	0.04	-48.9%	15562.18	15728.43	6.21%	6.25%	-1.1%	
Ceramics	4.58	7.12	0.01	0.01	-35.6%	2658.58	2676.92	1.06%	1.06%	-0.7%	
Engineering	65.71	93.49	0.15	0.16	-29.7%	15245.10	15367.63	6.08%	6.11%	-0.8%	
Food & Allied Product	21.58	34.99	0.05	0.06	-38.3%	23865.18	24097.31	9.52%	9.58%	-1.0%	
Insurance	5.57	11.38	0.01	0.02	-51.1%	6786.44	6900.95	2.71%	2.74%	-1.7%	
IT	2.11	4.25	0.00	0.01	-50.4%	498.72	508.96	0.20%	0.20%	-2.0%	
Jute	0.55	1.19	0.00	0.00	-54.0%	86.28	88.03	0.03%	0.04%	-2.0%	
Miscellaneous	20.43	28.85	0.05	0.05	-29.2%	8087.13	8171.57	3.23%	3.25%	-1.0%	
Mutual Fund	2.65	4.60	0.01	0.01	-42.4%	3475.50	3484.81	1.39%	1.39%	-0.3%	
NBFI	26.89	29.12	0.06	0.05	-7.6%	8472.48	8363.28	3.38%	3.33%	1.3%	
Paper & Printing	1.08	2.36	0.00	0.00	-54.3%	176.53	178.53	0.07%	0.07%	-1.1%	
Pharmaceuticals & Chemicals	47.33	89.05	0.11	0.16	-46.8%	40122.91	40350.29	16.01%	16.04%	-0.6%	
Power & Energy	75.41	90.87	0.18	0.16	-17.0%	34720.94	34825.48	13.85%	13.85%	-0.3%	
Service & Real Estate	24.13	24.00	0.06	0.04	0.6%	2018.11	2050.85	0.81%	0.82%	-1.6%	
Tannery	2.00	3.07	0.00	0.01	-34.8%	2416.38	2434.37	0.96%	0.97%	-0.7%	
Telecommunication	4.48	6.53	0.01	0.01	-31.4%	35823.29	36039.02	14.29%	14.33%	-0.6%	
Textile	30.57	68.69	0.07	0.12	-55.5%	7718.70	7826.42	3.08%	3.11%	-1.4%	
Travel & Leisure	7.98	9.60	0.02	0.02	-16.9%	2102.29	2130.74	0.84%	0.85%	-1.3%	

MC= Market Capitalization, % Δ in Turnover= change in turnover from last day, % Δ in MC= change in Market cap from last day

Index Movers	Index Shakers	Sector wise P/E (Fd.)			
ALARABANK	GP	Bank	9.56	NBFI	40.15
TITASGAS	OLYMPIC	Cement	35.18	Paper & Printing	62.86
SUMITPOWER	LAFSURCEML	Ceramics	43.97	Pharmaceuticals & Chemicals	27.64
DBH	MARICO	Engineering	29.01	Power & Energy	15.87
PUBALIBANK	POWERGRID	Food & Allied Product	30.47	Service & Real Estate	40.40
EXIMBANK	MJLBD	Insurance	14.60	Tannery	52.28
SIBL	BATBC	IT	16.16	Telecommunication	26.58
SOUTHEASTB	JAMUNAOIL	Jute	60.44	Textile	18.63
CITYBANK	LINDEBD	Miscellaneous	35.62	Travel & Leisure	18.53
DHAKABANK	MPETROLEUM				

Important News

Company News:

ISTPRIMFMF: Extension for another 3 years term: ICB Asset Management Company Ltd. has informed that BSEC has given consent to extend another 3 years term of Prime Finance 1st Mutual Fund after completion of its tenure of 7 years i.e. on 14 March, 2016. After completion of this said extended period, it will not be extended further.

BATASHOE: Interim Dividend: The Company has declared 215% interim cash dividend considering the performance of the Company from 01 January 2015 to 30 September 2015 and the retained earnings up to 31 December 2014. Record Date: 14.12.2015. The Company has also reported EPS of Tk. 42.63, NAV per share of Tk. 219.51 and NOCFPS of Tk. 15.58 for the period ended on September 30, 2015 as against Tk. 39.72, Tk. 193.95 and Tk. 15.70 respectively for the period ended on September 30, 2014.

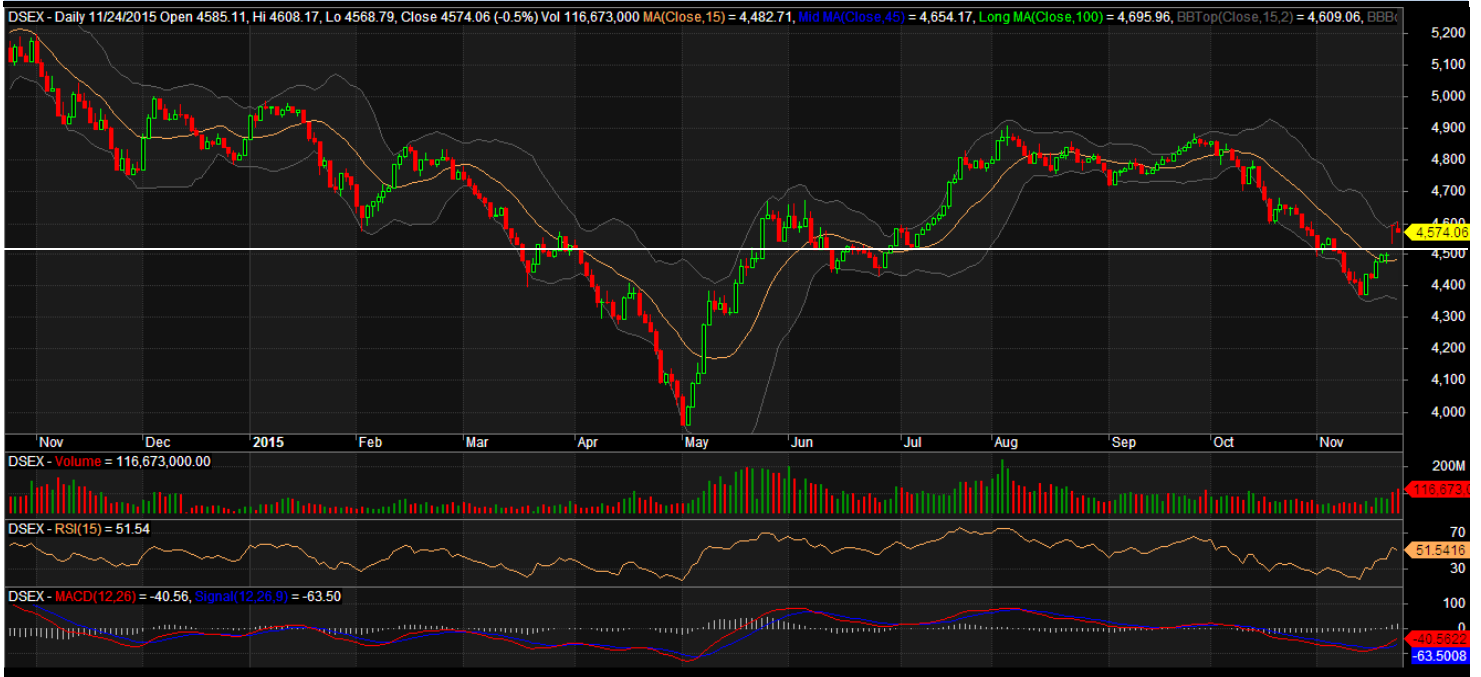
STANCERAM: Capital Machinery purchased: With reference to their decision earlier taken on the Board of Directors meeting held on 23.10.2012 and also referring to the news disseminated by DSE on 30.10.2012, The Company has further informed that it has imported Decal Machinery [Brand new capital machinery for making transfers (Decalcomanias) with accessories] Now, the Company is waiting to install the machinery for setting up Decal Plant. Total value of the capital machinery with accessories is Tk. 8.70 million (approx.). It is expected that for this machinery installation, quality of the goods would be improved and production cost would be reduced

Recent Dividend Declaration

Ticker	Dividend	Record Date
Shahjibazar Power Co. Ltd.	28% C & 3% B	07.12.15
Aftab Automobiles	C (for General Shareholders)	06.12.15
Knitting & Dyeing Industries I	5% C & 10% B	06.12.15
Meghna Petroleum Limited	105% C	22.12.15
Jamuna Oil Company Limited	100% C	28.12.15

Note: C= cash Dividend, B= Bonus Dividend, R=Right, N/A=NotApplicable

DSEX Technical Graph for last one year



MTB CAPITAL LIMITED

Corporate head office

Level: 3, MTB Tower, 111, Kazi Nazrul Islam Avenue, Dhaka

Phone: 8321714, Fax: 8321543

www.mtbcap.com

A mutual Trust Bank Company

you can invest with US

Disclaimer

This report has been prepared by the MTB Capital Limited (MTBCL) on the basis of available information in the market and it is provided for the purposes only. It is not to be used as an offer for buying or selling any instruments. If anyone takes any action relying on this information, shall be responsible solely by him/her self for any consequences. The best care has been taken to make the report informative. MTBCL doesn't give any warrant or guarantee that the report or such information is fully accurate. The information that are provided here is the exclusive property of MTBCL and can not be distributed without prior consent of MTBCL.