

Today's Market Overview

Tuesday, December 01, 2015

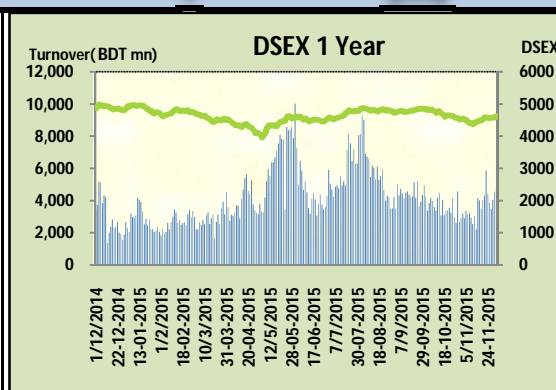


DSEX	4,621.67	0.89%	Issues Traded	Advanced	Declined	Unchanged
Turnover (BDT mn)	4,784.67	5.0%		189	79	53

Market observed huge gain today with an improved turnover as most of the investors were enthusiastic after seeing last couple of day's market movement. Finally market crossed the 4600 barrier with dynamic buoyancy in almost all big cap and small cap stocks. The premier bourse of the nation opened with a flying start and continued to fly till the end. Most of the major & prominent sectors were in rhythm. Investors participation behaved in matured way as big cap stocks movement motivated them to join the rally. Market found positive movement in small cap stocks along with big cap stocks. Investors might find some confidence as overall political situation is in good shape. NBFI back in the positive track as Telecom, Engineering & Pharmaceuticals kept the buoyancy like previous day. Among the small cap Insurance, Jute & Travel got attraction from the investors. All of the sectors put some gain except Textiles & Tannery. Other two indices DS30 & DSES the shariah based index both outperformed today.

The general gauge DSEX ended at 4621.67 with an advance of +0.9% which added 40.68 points to the broad DSEX. The Turnover advanced by +5.0% which was 229 Million BDT healthier than that of previous day and finally finished the mark at 4784.67 million BDT. A total of 189 issues advanced with 79 declined and 53 remained unchanged. Sectors that improved were: Bank (+0.3%) Cement (+0.5%) Ceramics (+0.9%) Engineering (+0.7%) Insurance (+2.3%) Food (+0.5%) NBFI (+0.4%) Pharmaceuticals (+1.2%) Power (+0.6%) Telecom (+1.8%) Service (+1.7%) & sectors that declined were: Tannery (-0.3%) Textiles (-0.3%)

IFADAUTOS topped in the Volume chart with a turnover of 29.48 BDT crore. BDAUTOCAR ranked top gainer chart with a price hike of +9.8% and JANATAINS topped in the loser chart with a decline of -7.9% from its prevailing price. GP led the way in the index mover chart while BSRMLTD played the shatter part.



Index Scenario				Market Highlights				
INDEX	Change	% Changes		DSEX 52 week H/L	4992/3960	Market P/E (LTM)	15.02	
DSEX	4621.67	40.68	0.9%	DSEX Week H/L	4622/4568	M.Cap (mn)	3186862.6	
DSES	1115.79	13.34	1.2%	Group Performances				
DS30	1754.77	20.68	1.2%	Category	Mkt Cap (mn.)	Δ % M.Cap	Turnover BDT (mn)	Δ % Turnover
Turnover Scenario				Group A	2,473,826.93	0.9%	3,847.29	0.8%
Today's Turnover (mn.)	Change In BDT (mn.)	% Change		Group B	12,961.95	0.4%	72.02	2.0%
4784.67	229	5.0%		Group N	35,160.86	0.2%	618.13	27.5%
				Group Z	23,490.60	0.4%	34.58	6.9%

Top Ten Volume (in BDT. crore)										
Stock	TT	YT	AT	% Δ in Turnover	TT/AT	CP	YP	% Δ P	Number of shares	Public Holding
IFADAUTOS	29.48	17.92	20.24	64.5%	45.6%	107.3	108.6	-1.2%	149,500,000.0	17%
BXPHERMA	27.16	20.98	11.81	29.5%	130.0%	79.5	77	3.2%	386,244,234.6	50%
SQURPHARMA	18.25	15.39	9.63	18.6%	89.6%	258.1	254.1	1.6%	623,586,546.0	9%
BSRMSTEEL	17.76	21.81	6.40	-18.6%	177.4%	97	97	0.0%	341,775,000.0	13%
KDSALTD	15.30	11.65	9.62	31.3%	59.1%	89	85.9	3.6%	52,000,000.0	21%
ALARABANK	13.25	7.20	4.59	84.0%	188.4%	15.9	15.3	3.9%	946,958,501.0	47%
RSRMSTEEL	11.79	4.72	3.53	149.7%	234.5%	53.6	51.4	4.3%	78,624,000.0	41%
SAIFPOWER	10.87	9.43	13.12	15.4%	-17.1%	72.1	70.6	2.1%	91,571,140.2	19%
QSMDDRYCELL	7.97	9.69	8.27	-17.7%	-3.5%	111.9	106.3	5.3%	36,799,488.0	54%
AMANFEED	7.74	7.09	4.20	9.2%	84.1%	48.2	47.3	1.9%	80,000,000.0	23%

TT= Today's Turnover in crore, YT= Yesterday's Turnover in Crore, AT= Average of Last 20 day's Turnover, CP= Current Price, YP= Yesterday's Price, % Δ P= percentage change in price

Top Ten Gainer						Top Ten Loser					
Stock	CP	YP	AP	% Δ P	% Δ in P from AP	Stock	CP	YP	AP	% Δ P	% Δ in P from AP
BDAUTOCA	40.4	36.8	32.96	9.8%	22.6%	JANATAINS	11.60	12.60	11.80	-7.9%	-1.7%
DSHGARME	139.8	128.4	134.92	8.9%	3.6%	ISNLTD	13.80	14.60	11.88	-5.5%	16.2%
7THICB	105.1	97.2	101.445	8.1%	3.6%	PROGRESLIF	52.40	55.00	56.24	-4.7%	-6.8%
DELTALIFE	108.9	101.7	92.81	7.1%	17.3%	RAHIMAFOOI	41.90	43.90	41.93	-4.6%	-0.1%
4THICB	231.5	216.6	212.7	6.9%	8.8%	LRGLOBMFI	6.40	6.70	6.25	-4.5%	2.5%
ATLASBANG	144.2	135.6	134.615	6.3%	7.1%	SIMTEX	24.20	25.30	22.24	-4.3%	8.8%
SAMATALETH	25.8	24.3	23.08	6.2%	11.8%	NITOLINS	20.80	21.60	20.97	-3.7%	-0.8%
NAVANACNG	46.8	44.1	44.59	6.1%	5.0%	MODERNDYE	105.90	109.60	120.53	-3.4%	-12.1%
QSMDDRYCELL	111.9	106.3	92.63	5.3%	20.8%	FUWANGCER	12.10	12.50	12.15	-3.2%	-0.4%
NORTHERN	269.1	255.9	258.265	5.2%	4.2%	EASTERNINS	25.40	26.20	25.28	-3.1%	0.5%

AP= Average Price of last 20 day,% Δ in P from AP= percentage change in price from the 20-day average price

Industry /Sectors overview (Amounts in BDT. Crore)											
Sector	Trade Volume		MKT Turnover %		% Δ in Turnover	Market Capitalization		% of Total MC		% Δ in MC	
	Today	Yesterday	Today	Yesterday		Today	Yesterday	Today	Yesterday		
Bank	44.65	47.33	0.10	0.11	-5.7%	41061.34	40923.93	16.15%	16.23%	0.3%	
Cement	14.22	18.42	0.03	0.04	-22.8%	15512.66	15431.64	6.10%	6.12%	0.5%	
Ceramics	3.43	3.87	0.01	0.01	-11.2%	2646.32	2622.00	1.04%	1.04%	0.9%	
Engineering	121.88	102.23	0.27	0.23	19.2%	15719.30	15603.35	6.18%	6.19%	0.7%	
Food & Allied Product	14.46	18.15	0.03	0.04	-20.3%	23984.13	23863.84	9.43%	9.47%	0.5%	
Insurance	10.66	6.73	0.02	0.02	58.3%	6981.88	6826.51	2.75%	2.71%	2.3%	
IT	1.70	2.17	0.00	0.00	-21.8%	493.82	493.96	0.19%	0.20%	0.0%	
Jute	2.48	0.75	0.01	0.00	230.0%	91.55	87.69	0.04%	0.03%	4.4%	
Miscellaneous	20.95	17.58	0.05	0.04	19.1%	8014.58	7975.69	3.15%	3.16%	0.5%	
Mutual Fund	4.44	4.67	0.01	0.01	-5.1%	3510.93	3484.50	1.38%	1.38%	0.8%	
NBFI	24.13	16.59	0.05	0.04	45.4%	8254.93	8220.11	3.25%	3.26%	0.4%	
Paper & Printing	1.27	1.34	0.00	0.00	-4.7%	179.76	177.73	0.07%	0.07%	1.1%	
Pharmaceuticals & Chemicals	79.02	70.25	0.17	0.16	12.5%	41010.39	40516.17	16.13%	16.07%	1.2%	
Power & Energy	45.51	54.57	0.10	0.12	-16.6%	34381.38	34160.87	13.52%	13.55%	0.6%	
Service & Real Estate	15.65	12.28	0.03	0.03	27.5%	2011.61	1977.22	0.79%	0.78%	1.7%	
Tannery	2.08	4.24	0.00	0.01	-51.1%	2390.72	2398.04	0.94%	0.95%	-0.3%	
Telecommunication	11.67	9.16	0.03	0.02	27.4%	38210.74	37537.45	15.03%	14.89%	1.8%	
Textile	28.00	44.75	0.06	0.10	-37.4%	7743.98	7768.30	3.05%	3.08%	-0.3%	
Travel & Leisure	8.10	3.25	0.02	0.01	149.1%	2050.86	2045.02	0.81%	0.81%	0.3%	

MC= Market Capitalization, % Δ in Turnover= change in turnover from last day, % Δ in MC= change in Market cap from last day

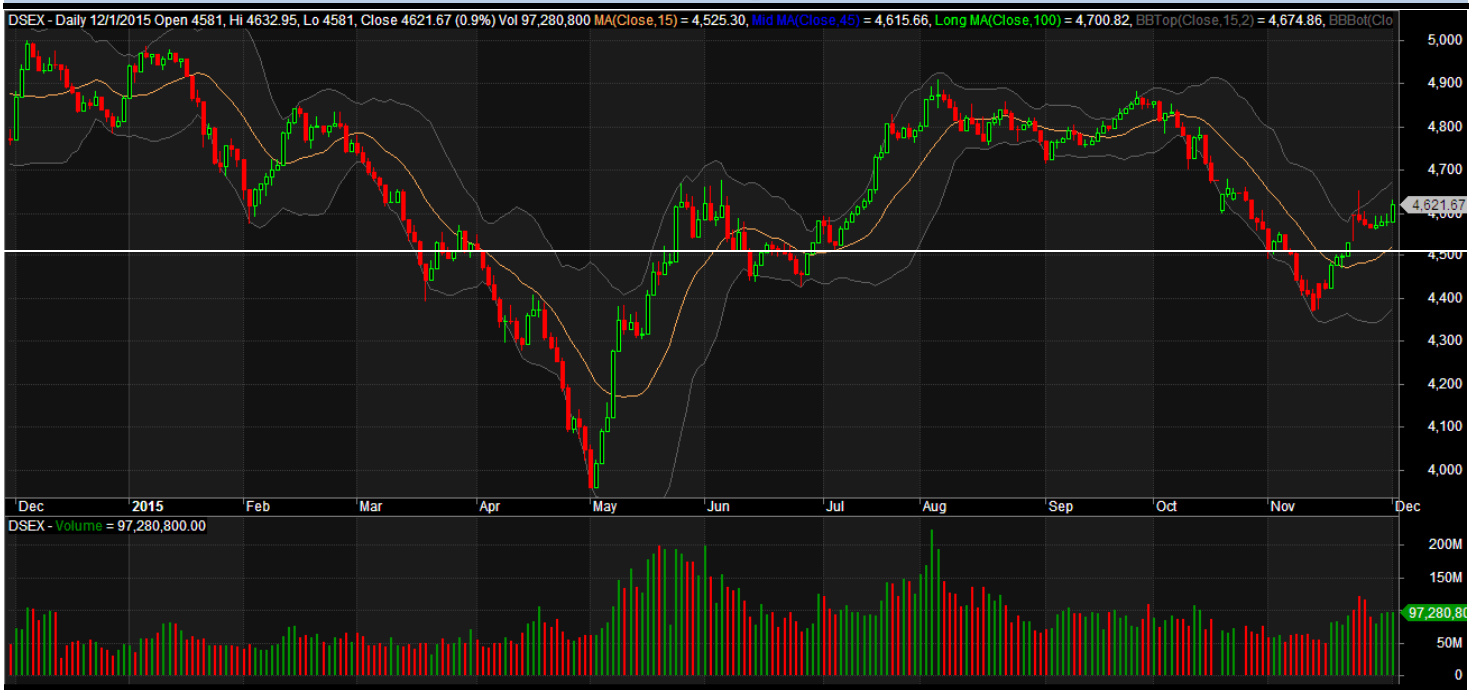
Index Movers	Index Shakers	Sector wise P/E (Fd.)			
GP	BSRMLTD	Bank	9.51	NBFI	39.20
SQRPHARMA	EBL	Cement	34.40	Paper & Printing	65.94
BXPHARMA	IFADAUTOS	Ceramics	43.83	Pharmaceuticals & Chemicals	28.00
DELTALIFE	JAMUNAOIL	Engineering	29.72	Power & Energy	15.83
UPGDCL	TRUSTBANK	Food & Allied Product	30.78	Service & Real Estate	40.21
BSCCL	DUTCHBANGL	Insurance	14.58	Tannery	50.36
BATBC	BATASHOE	IT	22.25	Telecommunication	27.55
LAFSURCEML	IFIC	Jute	65.26	Textile	18.23
ALARABANK	UTTARAFIN	Miscellaneous	34.97	Travel & Leisure	18.11
OLYMPIC	MALEKSPIN				

Important News**Company News:****Recent Dividend Declaration**

Ticker	Dividend	Record Date
--------	----------	-------------

Shahjibazar Power Co. Ltd.	28% C & 3% B	07.12.15
Aftab Automobiles	C (for General Shareholders)	06.12.15
Knitting & Dyeing Industries I	5% C & 10% B	06.12.15
Meghna Petroleum Limited	105% C	22.12.15
Jamuna Oil Company Limited	100% C	28.12.15

Note: C= cash Dividend, B= Bonus Dividend, R=Right, N/A=NotApplicable

DSEX Technical Graph for last year**MTB CAPITAL LIMITED**

Corporate head office

Level: 3, MTB Tower, 111, Kazi Nazrul Islam Avenue, Dhaka

Phone: 8321714, Fax: 8321543

www.mtbcap.com*A mutual Trust Bank Company**you can invest with US***Disclaimer**

This report has been prepared by the MTB Capital Limited (MTBCL) on the basis of available information in the market and it is provided for the purposes only. It is not to be used as an offer for buying or selling any instruments. If anyone takes any action relying on this information, shall be responsible solely by him/her self for any consequences. The best care has been taken to make the report informative. MTBCL doesn't give any warrant or guarantee that the report or such information is fully accurate. The information that are provided here is the exclusive property of MTBCL and can not be distributed without prior consent of MTBCL.