

Today's Market Overview

Monday, October 19, 2015

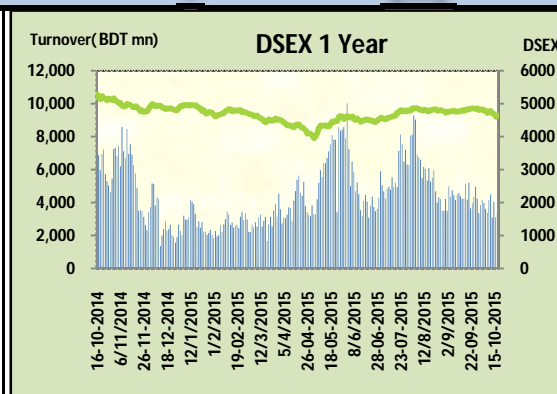


DSEX	4,644.64	0.79%	Issues Traded	Advanced	Declined	Unchanged
Turnover (BDT mn)	3,358.02	8.0%		145	131	45

Market observed gain after three days of downfall with a slightly improved turnover. Buoyancy in some big cap stocks helped the market to come out from the depression of last couple of days. The premier bourse of the nation opened with a positive mood but couldn't sustain more than an hour again soon after the first hour it started to move up and closed with gain. Telecom & Cement sectors mostly were in concentration after last couple of days' over sold. Other major sectors put a marginal gain while Engineering & NBFI ill performed today. Participation level increased slightly as optimistic investors took some position while most of the investors remained out of the side line. Other two indices DS30 & DSES the shariah based index both outperformed today.

The general gauge DSEX ended at 4644.64 with an advance of +0.8% which added 36.60 points to the broad DSEX. The Turnover advanced by +8.0% which was 249 Million BDT healthier than that of previous day and finally finished the mark at 3358.02 million BDT. A total of 145 issues advanced with 131 declined and 45 remained unchanged. Sectors that improved were: Bank (+0.2%) Cement (+5.1%) Engineering (+0.6%) Pharmaceuticals (+0.6%) Power (+0.7%) Telecom (+3.0%) Travel (+2.1%) & sectors that declined were: Ceramics (-1.2%) Miscellaneous (-0.4%) NBFI (-1.2%) Service (-0.6%).

LAFSUCCEML topped in the Volume chart with a turnover of 27.37 BDT crore. LAFSURCEML ranked top gainer chart with a price hike of +8.4% and RAHIMAFOD topped in the loser chart with a decline of -8.1% from its prevailing price. GP led the way in the index mover chart while PREMIERCEM played the shatter part.



Index Scenario				Market Highlights			
INDEX	Change	% Changes		DSEX 52 week H/L	5334/3960	Market P/E (LTM)	15.10
DSEX	4644.64	36.60	0.8%	DSEX Week H/L	4780/4608	M.Cap (mn)	3183722.9
DSES	1108.54	13.94	1.3%	Group Performances			
DS30	1763.39	19.91	1.1%	Category	Mkt Cap (mn.)	Δ % M.Cap	Turnover BDT (mn)
Turnover Scenario				Group A	2,486,977.52	1.0%	2,679.67
Today's Turnover (mn.)	Change In BDT (mn.)	% Change		Group B	13,528.66	-0.6%	57.61
3358.02	249	8.0%		Group N	31,147.92	1.0%	354.46
				Group Z	24,106.69	-0.7%	21.58

Top Ten Volume (in BDT. crore)											
Stock	TT	YT	AT	% Δ in Turnover	TT/AT	CP	YP	% Δ P	Number of shares	Public Holding	
LAFSURCEML	27.37	46.65	15.06	-41.3%	81.8%	90.1	83.1	8.4%	1,161,373,500.0	30%	
BXPHERMA	16.86	8.71	17.36	93.5%	-2.9%	71.8	71.8	0.0%	386,244,234.6	50%	
KDSALTD	15.23	10.90	23.97	39.8%	-36.4%	66.8	71.3	-6.3%	52,000,000.0	21%	
EMERALDOIL	12.20	4.85	4.61	151.5%	164.8%	55.5	53.3	4.1%	49,350,000.0	38%	
IFADAUTOS	10.49	3.52	5.76	198.1%	82.1%	110.6	104.6	5.7%	115,000,000.0	17%	
GP	10.16	7.08	10.28	43.6%	-1.1%	252.2	244.6	3.1%	1,350,300,022.0	4%	
MHSMML	8.41	3.58	6.29	135.2%	33.6%	43.1	41.2	4.6%	78,093,750.0	40%	
BSRMSTEEL	7.93	18.09	10.38	-56.2%	-23.6%	94.9	93.9	1.1%	341,775,000.0	13%	
CITYBANK	7.14	2.71	4.94	163.5%	44.6%	20.8	20	4.0%	875,798,031.2	59%	
CVOPRL	5.14	6.10	4.31	-15.6%	19.3%	437.7	443.8	-1.4%	19,800,000.0	34%	

TT= Today's Turnover in crore, YT= Yesterday's Turnover in Crore, AT= Average of Last 20 day's Turnover, CP= Current Price, YP= Yesterday's Price, % Δ P= percentage change in price

Top Ten Gainer						Top Ten Loser					
Stock	CP	YP	AP	% Δ P	% Δ in P from AP	Stock	CP	YP	AP	% Δ P	% Δ in P from AP
LAFSURCEML	90.1	83.1	101.975	8.4%	-11.6%	RAHIMAFOOD	44.40	48.30	50.00	-8.1%	-11.2%
PARAMOUNT	12.1	11.2	12.135	8.0%	-0.3%	STANCERAM	42.30	46.00	48.34	-8.0%	-12.5%
SAVAREFR	53	49.3	51.195	7.5%	3.5%	PREMIERCEM	91.70	97.10	90.22	-5.6%	1.6%
ZAHINTEX	25.3	23.7	23.43	6.8%	8.0%	RELIANCINS	47.50	50.10	49.66	-5.2%	-4.3%
NORTHERN	306.9	289.1	313.215	6.2%	-2.0%	UNITEDFIN	18.50	19.40	20.82	-4.6%	-11.1%
CENTRALPHL	24.9	23.5	26.77	6.0%	-7.0%	SAIFPOWER	63.90	66.60	85.53	-4.1%	-25.3%
IFADAUTOS	110.6	104.6	106.835	5.7%	3.5%	FINEFOODS	9.50	9.90	10.21	-4.0%	-6.9%
1STICB	1508.1	1430.1	1455.64	5.5%	3.6%	DBH1STMF	5.10	5.30	5.01	-3.8%	1.9%
KAY&QUE	17.9	17	15.305	5.3%	17.0%	OAL	41.20	42.60	49.34	-3.3%	-16.5%
APEXFOODS	110.1	104.6	129.38	5.3%	-14.9%	MONNOCERA	38.50	39.80	43.00	-3.3%	-10.5%

AP= Average Price of last 20 day,% Δ in P from AP= percentage change in price from the 20-day average price

Industry /Sectors overview (Amounts in BDT. Crore)											
Sector	Trade Volume		MKT Turnover %		% Δ in Turnover	Market Capitalization		% of Total MC		% Δ in MC	
	Today	Yesterday	Today	Yesterday		Today	Yesterday	Today	Yesterday		
Bank	37.27	29.10	0.12	0.10	28.1%	41546.61	41457.23	16.28%	16.41%	0.2%	
Cement	30.94	49.01	0.10	0.16	-36.9%	16819.04	15999.49	6.59%	6.33%	5.1%	
Ceramics	3.74	3.17	0.01	0.01	18.1%	2658.37	2689.42	1.04%	1.06%	-1.2%	
Engineering	54.77	55.23	0.18	0.18	-0.8%	14790.72	14704.25	5.79%	5.82%	0.6%	
Food & Allied Product	18.86	10.51	0.06	0.03	79.6%	24530.88	24482.74	9.61%	9.69%	0.2%	
Insurance	3.70	3.58	0.01	0.01	3.4%	6886.76	6893.15	2.70%	2.73%	-0.1%	
IT	1.99	1.59	0.01	0.01	25.3%	503.50	503.41	0.20%	0.20%	0.0%	
Jute	0.46	0.40	0.00	0.00	15.3%	99.37	95.27	0.04%	0.04%	4.3%	
Miscellaneous	12.12	12.01	0.04	0.04	1.0%	8534.73	8572.08	3.34%	3.39%	-0.4%	
Mutual Fund	5.73	6.42	0.02	0.02	-10.8%	3517.70	3508.01	1.38%	1.39%	0.3%	
NBFI	12.27	10.80	0.04	0.04	13.6%	8035.72	8050.67	3.15%	3.19%	-0.2%	
Paper & Printing	0.63	0.70	0.00	0.00	-10.2%	194.85	197.29	0.08%	0.08%	-1.2%	
Pharmaceuticals & Chemicals	40.30	36.05	0.13	0.12	11.8%	40329.20	40080.85	15.80%	15.86%	0.6%	
Power & Energy	31.67	33.28	0.10	0.11	-4.8%	36641.93	36390.24	14.36%	14.40%	0.7%	
Service & Real Estate	8.19	14.44	0.03	0.05	-43.3%	1844.38	1854.94	0.72%	0.73%	-0.6%	
Tannery	4.09	2.83	0.01	0.01	44.5%	2492.78	2498.61	0.98%	0.99%	-0.2%	
Telecommunication	11.47	8.15	0.04	0.03	40.7%	35660.15	34623.42	13.97%	13.70%	3.0%	
Textile	23.48	17.06	0.08	0.06	37.6%	7948.07	7925.71	3.11%	3.14%	0.3%	
Travel & Leisure	6.17	7.17	0.02	0.02	-13.9%	2199.05	2153.91	0.86%	0.85%	2.1%	

MC= Market Capitalization, % Δ in Turnover= change in turnover from last day, % Δ in MC= change in Market cap from last day

Index Movers	Index Shakers	Sector wise P/E			
GP	PREMIERCEM	Bank	9.07	NBFI	30.46
LAFSURCEML	BERGERPBL	Cement	31.78	Paper & Printing	65.06
UPGDCL	SPCL	Ceramics	36.14	Pharmaceuticals & Chemicals	26.82
MJLBD	JAMUNAOIL	Engineering	33.98	Power & Energy	15.37
SQURPHARMA	DUTCHBANGL	Food & Allied Product	35.58	Service & Real Estate	40.82
CITYBANK	KDSALTD	Insurance	13.80	Tannery	33.88
IFADAUTOS	BATBC	IT	16.24	Telecommunication	24.16
OLYMPIC	DBH	Jute	164.65	Textile	16.56
POWERGRID	BRACBANK	Miscellaneous	34.22	Travel & Leisure	14.29
HEIDELBCEM	RAKCERAMIC				

Important News

Company News:

UPGDCL: Q3 Financials (Q3 Un-audited): EPS was Tk. 2.42 for July-September, 2015 as against Tk. 1.67 for July-September, 2014; EPS was Tk. 6.96 for January-September, 2015 as against Tk. 4.92 for January-September, 2014. NOCFPS was Tk. 7.51 for January-September, 2015 as against Tk. 5.36 for January-September, 2014. NAV per share was Tk. 34.17 as of September 30, 2015 and Tk. 26.57 as of December 31, 2014.

GP: Q3 Financials: (Q3 Un-audited): EPS was Tk. 3.07 for July-September, 2015 as against Tk. 3.96 for July-September, 2014; EPS was Tk. 10.83 for January-September, 2015 as against Tk. 11.79 for January-September, 2014. NOCFPS was Tk. 21.58 for January-September, 2015 as against Tk. 18.44 for January-September, 2014. NAV per share was Tk. 19.55 as of September 30, 2015 and Tk. 20.35 as of September 30, 2014.

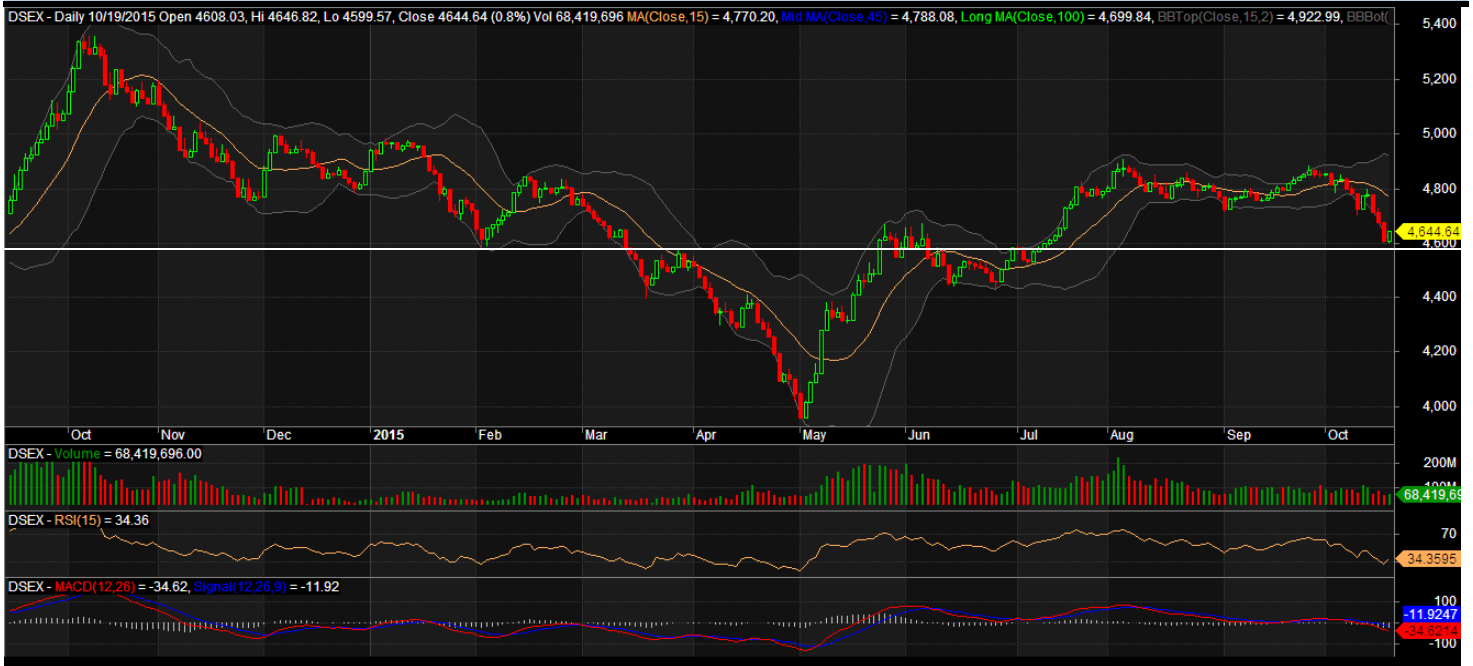
MTB: Q3 Financials: (Q3 Un-audited): Consolidated EPS was Tk. 1.12 for July-September, 2015 as against Tk. 0.53 for July-September, 2014; Consolidated EPS was Tk. 2.47 for January-September, 2015 as against Tk. 1.53 for January-September, 2014. Consolidated NOCFPS was Tk. 7.57 for January-September, 2015 as against Tk. 18.58 for January-September, 2014. Consolidated NAV per share was Tk. 22.43 as of September 30, 2015 and Tk. 22.00 as of December 31, 2014.

Recent Dividend Declaration

Ticker	Dividend	Record Date
Beach Hatchery Ltd.	5%B	28.10.15

Note: C= cash Dividend, B= Bonus Dividend, R=Right, N/A=NotApplicable

DSEX Technical Graph for last one year



MTB CAPITAL LIMITED

Corporate head office

Level: 3, MTB Tower, 111, Kazi Nazrul Islam Avenue, Dhaka

Phone: 8321714, Fax: 8321543

www.mtbcap.com

A mutual Trust Bank Company

you can invest with US

Disclaimer

This report has been prepared by the MTB Capital Limited (MTBCL) on the basis of available information in the market and it is provided for the purposes only. It is not to be used as an offer for buying or selling any instruments. If anyone takes any action relying on this information, shall be responsible solely by him/her self for any consequences. The best care has been taken to make the report informative. MTBCL doesn't give any warrant or guarantee that the report or such information is fully accurate. The information that are provided here is the exclusive property of MTBCL and can not be distributed without prior consent of MTBCL.