

# Today's Market Overview

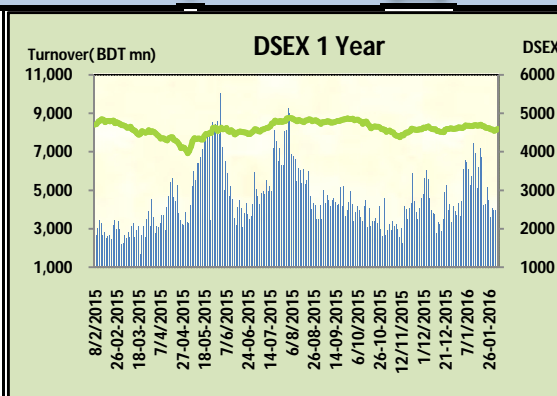
Tuesday, February 02, 2016



<b>DSEX</b>	4,591.10	0.67%	<b>Issues Traded</b>	↑ <b>Advanced</b> 157	↓ <b>Declined</b> 125	↔ <b>Unchanged</b> 38
<b>Turnover (BDT mn)</b>	5,097.33	29.5%				

Market continued the gaining streak for the second days with heavily improved turnover. The premier bourse of the nation opened with a positive mood and continued the same mood till the closure. Strong buoyancy roamed the market mostly in big cap stocks. Most of the concentration occurred in Pharmaceuticals, Power, Bank & Food. Investors' participation increased as positive movement in prominent big cap stocks notably found from the early session. Small cap stocks observed severity today. Investors felt confidence as league of Institutional investors showed their concern regarding development of the market. Most of the major sectors were gainer except NBF. Turnover crossed the 5 billion mark after five trading days which actually relieved investors from tension. Among the other two indices DS30 performed better than DSES the shariah based index. Telecom was the best gainer followed by Pharmaceuticals & Power while IT was the best loser followed by Paper & Ceramics. The general gauge DSEX ended at 4591 with an advance of +0.7% which added 30.68 points to the broad DSEX. The Turnover advanced heavily by +29.5% which was only 1162 Million BDT healthier than that of previous day and finally finished the mark at 5097.33 million BDT. A total of 157 issues advanced with 125 declined and 38 remained unchanged. Sectors that improved were: Bank (+0.1%) Cement (+0.5%) Engineering (+0.5%) Food (+0.7%) Miscellaneous (+1.0%) Pharmaceuticals (+1.3%) Power (+1.5%) Telecom (+1.8%) Tannery (+0.6%) Travel (+1.1%) Insurance (+0.6%) & Sectors that declined were: Ceramics (-0.8%) NBF (-0.1%) IT (-4.7%) Textiles (-0.5%) Service (-0.4%)

BXPHARMA topped in the Volume chart with a turnover of 26.05 BDT crore. APEXDFOODS ranked top gainer chart with a price hike of +10.00% and EASTRNLUB topped in the loser chart with a decline of -7.4% from its prevailing price. GP led the way in the index mover chart while TITASGAS played the shatter part.



Index Scenario				Market Highlights					
	<b>INDEX</b>	<b>Change</b>	<b>% Changes</b>	<b>DSEX 52 week H/L</b>	4992/3960	<b>Market P/E (LTM)</b>	14.91		
	<b>DSEX</b>	4591.10	30.68	0.7%	<b>DSEX Week H/L</b>	4591/4540	<b>M.Cap (mn)</b>	3159720.3	
	<b>DSES</b>	1111.21	10.11	0.9%	<b>Group Performances</b>				
	<b>DS30</b>	1746.17	16.54	1.0%	<b>Category</b>	<b>Mkt Cap (mn.)</b>	<b>Δ % M.Cap</b>	<b>Turnover BDT (mn)</b>	<b>Δ % Turnover</b>
	<b>Turnover Scenario</b>			<b>Group A</b>	2,464,368.95	0.9%	4,161.76	32.1%	
	<b>Today's Turnover (mn.)</b>	<b>Change In BDT (mn.)</b>	<b>% Change</b>	<b>Group B</b>	14,546.15	-0.5%	151.87	26.5%	
	5097.33	1,162	29.5%	<b>Group N</b>	35,242.78	-1.9%	318.38	27.9%	
				<b>Group Z</b>	29,545.04	0.3%	57.96	-0.9%	

Top Ten Volume (in BDT. crore)										
Stock	TT	YT	AT	% Δ in Turnover	TT/AT	CP	YP	% Δ P	Number of shares	Public Holding
<b>BXPHARMA</b>	26.05	10.41	12.35	150.2%	110.9%	89	87.1	2.2%	386,244,234.6	50%
<b>SQURPHARMA</b>	24.71	18.65	10.00	32.5%	147.2%	265.2	261.6	1.4%	623,586,546.0	9%
<b>CITYBANK</b>	15.96	13.47	8.85	18.4%	80.3%	23.6	23.1	2.2%	875,798,031.2	59%
<b>UPGDCL</b>	15.56	7.23	19.85	115.2%	-21.6%	161.2	158.1	2.0%	362,944,698.6	5%
<b>ALLTEX</b>	14.56	10.04	11.35	45.0%	28.3%	27.9	29.7	-6.1%	55,968,000.0	51%
<b>ITC</b>	12.60	8.05	13.25	56.6%	-4.9%	67.5	72.3	-6.6%	87,000,000.0	12%
<b>CVOPRL</b>	11.02	5.64	4.99	95.5%	120.7%	311	302	3.0%	24,750,000.0	34%
<b>APOLOISPAT</b>	9.26	23.19	7.05	-60.1%	31.3%	19.3	19.7	-2.0%	322,000,000.0	36%
<b>OLYMPIC</b>	9.18	3.80	4.30	141.3%	113.6%	268.9	264.3	1.7%	190,417,988.2	27%
<b>RAKCERAMIC</b>	8.67	6.01	6.56	44.2%	32.3%	71.4	72.1	-1.0%	336,850,610.0	12%

TT= Today's Turnover in crore, YT= Yesterday's Turnover in Crore, AT= Average of Last 20 day's Turnover, CP= Current Price, YP= Yesterday's Price, % Δ P= percentage change in price

Top Ten Gainer						Top Ten Loser					
Stock	CP	YP	AP	% Δ P	% Δ in P from AP	Stock	CP	YP	AP	% Δ P	% Δ in P from AP
APEXFOODS	127.6	116	112.975	10.0%	12.9%	EASTRNLUB	699.90	755.90	460.40	-7.4%	52.0%
SPCL	115.6	105.1	119.35	10.0%	-3.1%	UNITEDINS	28.70	30.90	28.82	-7.1%	-0.4%
BANGAS	210.5	193.3	220.255	8.9%	-4.4%	ICBEPMF1S1	6.60	7.10	6.45	-7.0%	2.3%
AMBEEPCHA	311.9	286.8	274.635	8.8%	13.6%	ITC	67.50	72.30	65.54	-6.6%	3.0%
LIBRAINFU	360.5	331.5	303.175	8.7%	18.9%	MIRACLEIND	32.60	34.80	34.95	-6.3%	-6.7%
GEMINISEA	381.9	351.2	328.58	8.7%	16.2%	TALLUSPIN	22.50	24.00	22.31	-6.3%	0.9%
SHYAMPSUG	7	6.5	6.53	7.7%	7.2%	ALLTEX	27.90	29.70	26.49	-6.1%	5.3%
ARAMIT	495.8	462.6	480.57	7.2%	3.2%	IMAMBUTTOI	10.00	10.60	10.18	-5.7%	-1.8%
JUTESPINN	52.8	49.3	56.735	7.1%	-6.9%	DAFODILCOM	21.70	23.00	23.08	-5.7%	-6.0%
RENWICKJA	285.2	266.5	245.17	7.0%	16.3%	SINOBANGLA	31.50	33.10	30.96	-4.8%	1.7%

AP= Average Price of last 20 day,% Δ in P from AP= percentage change in price from the 20-day average price

Industry /Sectors overview (Amounts in BDT. Crore)											
Sector	Trade Volume		MKT Turnover %		% Δ in Turnover	Market Capitalization		% of Total MC		% Δ in MC	
	Today	Yesterday	Today	Yesterday		Today	Yesterday	Today	Yesterday		
Bank	43.08	29.10	0.09	0.08	48.0%	40215.08	40172.75	15.83%	15.94%	0.1%	
Cement	11.09	8.22	0.02	0.02	34.9%	14249.22	14174.55	5.61%	5.63%	0.5%	
Ceramics	14.67	20.65	0.03	0.06	-28.9%	2852.11	2874.62	1.12%	1.14%	-0.8%	
Engineering	63.54	65.76	0.14	0.19	-3.4%	15393.83	15315.84	6.06%	6.08%	0.5%	
Food & Allied Product	27.35	20.17	0.06	0.06	35.6%	25018.40	24851.35	9.85%	9.86%	0.7%	
Insurance	7.95	5.68	0.02	0.02	40.0%	7438.70	7391.64	2.93%	2.93%	0.6%	
IT	20.76	13.82	0.04	0.04	50.3%	1099.64	1153.70	0.43%	0.46%	-4.7%	
Jute	0.51	0.40	0.00	0.00	26.6%	81.01	78.43	0.03%	0.03%	3.3%	
Miscellaneous	16.41	18.15	0.04	0.05	-9.6%	8330.05	8249.97	3.28%	3.27%	1.0%	
Mutual Fund	3.15	4.31	0.01	0.01	-26.9%	3652.05	3629.99	1.44%	1.44%	0.6%	
NBFI	15.32	11.49	0.03	0.03	33.4%	8935.68	8942.02	3.52%	3.55%	-0.1%	
Paper & Printing	1.01	1.03	0.00	0.00	-1.4%	199.29	202.24	0.08%	0.08%	-1.5%	
Pharmaceuticals & Chemicals	93.22	50.89	0.20	0.14	83.2%	41696.67	41175.42	16.41%	16.34%	1.3%	
Power & Energy	66.26	43.15	0.14	0.12	53.6%	33222.05	32736.11	13.08%	12.99%	1.5%	
Service & Real Estate	9.06	6.40	0.02	0.02	41.7%	1881.92	1889.47	0.74%	0.75%	-0.4%	
Tannery	2.06	1.46	0.00	0.00	41.3%	2388.65	2374.10	0.94%	0.94%	0.6%	
Telecommunication	5.67	5.45	0.01	0.02	4.2%	36990.83	36338.05	14.56%	14.42%	1.8%	
Textile	60.33	42.59	0.13	0.12	41.7%	8227.11	8272.38	3.24%	3.28%	-0.5%	
Travel & Leisure	5.59	4.67	0.01	0.01	19.7%	2190.18	2166.01	0.86%	0.86%	1.1%	

MC= Market Capitalization, % Δ in Turnover= change in turnover from last day, % Δ in MC= change in Market cap from last day

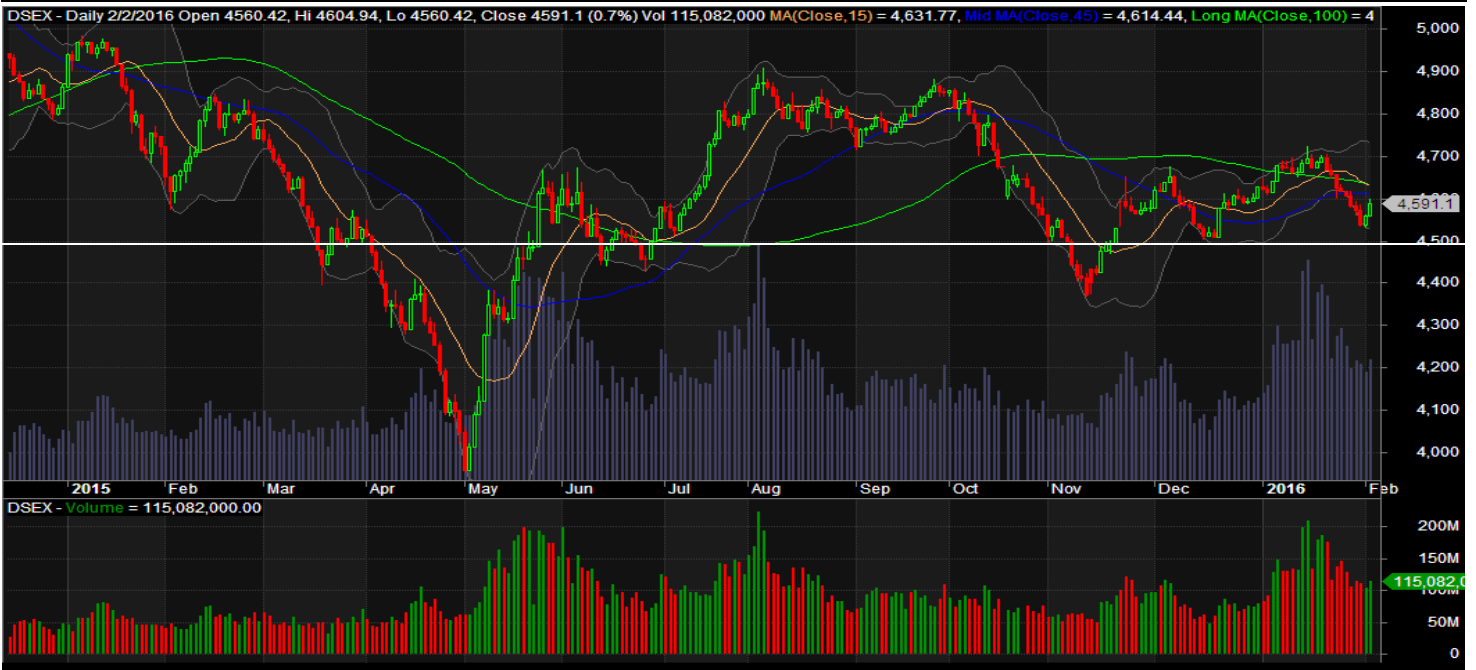
Index Movers	Index Shakers	Sector wise P/E (Fd.)			
GP	TITASGAS	Bank	9.27	NBFI	43.30
SQRPHARMA	ITC	Cement	30.41	Paper & Printing	104.98
SPCL	BRACBANK	Ceramics	44.29	Pharmaceuticals & Chemicals	28.10
UPGDCL	RAK CERAMIC	Engineering	64.19	Power & Energy	16.44
LINDEBD	IFADAUTOS	Food & Allied Product	31.67	Service & Real Estate	35.17
OLYMPIC	ALARABANK	Insurance	15.85	Tannery	54.32
BXPHARMA	ISLAMIBANK	IT	128.51	Telecommunication	27.24
BATBC	EMERALDOIL	Jute	172.19	Textile	18.48
ACI	PADMAOIL	Miscellaneous	36.24	Travel & Leisure	24.77
ACIFORMULA	HEIDELBCEM				

**Important News****Company News:****Recent Dividend Declaration**

Ticker	Dividend	Record Date
--------	----------	-------------

S. Alam Cold Rolled Steels Ltd.	15%C	28.01.16
HRTEX	10%C	10.02.2016
Marico	100%C	15.02.2016

Note: C= cash Dividend, B= Bonus Dividend, R=Right, N/A=NotApplicable

**DSEX Technical Graph for last one year****MTB CAPITAL LIMITED**

Corporate head office

Level: 3, MTB Tower, 111, Kazi Nazrul Islam Avenue, Dhaka

Phone: 8321714, Fax: 8321543

[www.mtbcap.com](http://www.mtbcap.com)*A Mutual Trust Bank Company**you can invest with us***Disclaimer**

This report has been prepared by the MTB Capital Limited (MTBCL) on the basis of available information in the market and it is provided for the purposes only. It is not to be used as an offer for buying or selling any instruments. If anyone takes any action relying on this information, shall be responsible solely by him/her self for any consequences. The best care has been taken to make the report informative. MTBCL doesn't give any warrant or guarantee that the report or such information is fully accurate. The information that are provided here is the exclusive property of MTBCL and can not be distributed without prior consent of MTBCL.