

Today's Market Overview

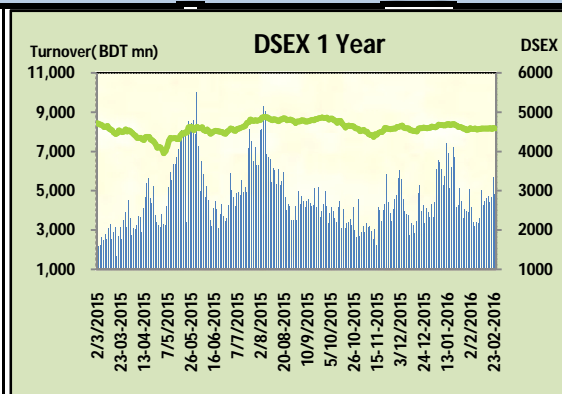
Wednesday, February 24, 2016



DSEX	4,579.53	-0.41%	Issues Traded	Advanced	Declined	Unchanged
Turnover (BDT mn)	4,851.46	-15.07%		110	160	52

Market observed a sharp fall with a heavily declined turnover. the premier bourse Of the nation opened with a positive mood and gained almost 25 points within the first hour with a very remarkable turnover, but soon after the first hour situation started to change and investors repeated their tendency of picking quick gain and thus pushed the market on pressure to close on red zone. Some dividend declaration attracted investors to banking sectors in early morning. During the midsession investors were busy in offloading their holdings while found the participation level was not up to the mark. Most of the concentration occurred in Banking sector by shifting from other sectors specially investors from Cement & NBFI shown distrust with their holdings. Sideliner remained idle while found a poor participation during midsession, moreover there was no recovery stance for once. Turnover Somehow crossed 4.5 billion mark but index again failed to test the 4600 mark. Most of the major sectors performed poor except Bank & Textiles. Cement was the worst loser followed by NBFI & Power. Among the other two indices DS30 performed comparatively poor than DSES the shariah based index. The general gauge DSEX ended at 4579.53 with a decline of -0.41% which cut 18.81 points from the broad DSEX. The Turnover declined heavily by -15.1% which was 861 Million BDT poorer than that of previous day and finally finished the mark at 4851.46 million BDT. A total of 110 issues advanced with 160 declined and 52 remained unchanged. Sectors that improved were: Bank (+1.1%) Paper (+2.8%) Textiles (+0.3%) Travel (+0.7%) & Sectors that declined were: Cement (-2.8%) Food (-2.2%) Engineering (-0.3%) Food (-1.4%) Insurance (-0.3%) NBFI (-1.6%) Pharmaceuticals (-0.5%) Power (-1.1%) Service (-2.9%) Telecom (-0.3%)



BSRMLTD topped in the Volume chart with a turnover of 28.02 BDT crore. DACCADYE ranked top gainer chart with a price hike of +10.0% and SINOBANGLA topped in the loser chart with a decline of -6.5% from its prevailing price. HEIDELBERG led the way in the index mover chart while LAFSURCEML played the shatter part.



Index Scenario				Market Highlights				
INDEX		Change	% Changes	DSEX 52 week H/L		4992/3960	Market P/E (LTM)	14.54
DSEX	4579.53	(18.81)	-0.4%	DSEX Week H/L		4598/4578	M.Cap (mn)	3176010.5
				Group Performances				
DSES	1120.08	(8.97)	-0.8%	Category	Mkt Cap (mn.)	Δ % M.Cap	Turnover BDT (mn)	Δ % Turnover
DS30	1757.76	(19.47)	-1.1%	Group A	2,453,515.40	-0.5%	4,202.52	-15.6%
Turnover Scenario				Group B	12,054.05	-0.3%	108.48	6.7%
Today's Turnover (mn.)	Change In BDT (mn.)		% Change	Group N	35,902.95	-1.0%	411.36	3.6%
4851.46	(861)	-15.1%		Group Z	34,183.33	-0.2%	69.55	-9.7%

Top Ten Volume (in BDT. crore)										
Stock	TT	YT	AT	% Δ in Turnover	TT/AT	CP	YP	% Δ P	Number of shares	Public Holding
BSRMLTD	28.02	37.65	16.79	-25.6%	66.9%	183.4	182.3	0.6%	173,351,038.0	9%
LANKABAFIN	22.29	46.99	5.76	-52.6%	286.9%	34.4	36.7	-6.3%	240,643,434.9	61%
UCB	18.14	3.29	3.12	451.0%	480.8%	21.3	20.3	4.9%	1,003,933,957.2	58%
LAFSURCEML	14.56	19.23	8.14	-24.3%	78.8%	77.9	82.2	-5.2%	1,161,373,500.0	30%
IFADAUTOS	14.28	18.77	9.51	-23.9%	50.2%	96.6	99.3	-2.7%	149,500,000.0	17%
SQURPHARMA	12.96	13.04	12.61	-0.6%	2.8%	268.9	269.8	-0.3%	623,586,546.0	9%
CMCKAMAL	12.40	9.97	3.96	24.3%	213.2%	19.2	18.6	3.2%	96,811,412.6	59%
UPGDCL	12.32	17.90	13.25	-31.2%	-7.0%	164.3	162.5	1.1%	362,944,698.6	5%
SINGERBD	11.87	3.80	3.64	212.4%	226.2%	182.4	174.3	4.6%	76,694,491.3	20%
ONEBANKLTD	11.52	6.25	2.14	84.2%	438.7%	15.4	15.1	2.0%	589,924,914.8	50%

TT= Today's Turnover in crore, YT= Yesterday's Turnover in Crore, AT= Average of Last 20 day's Turnover, CP= Current Price, YP= Yesterday's Price, % Δ P= percentage change in price

<div>  Top Ten Gainer </div>						<div> Top Ten Loser  </div>					
Stock	CP	YP	AP	% Δ P	% Δ in P from AP	Stock	CP	YP	AP	% Δ P	% Δ in P from AP
DACCADYE	13.2	12	13.685	10.0%	-3.5%	SINOBANGLA	37.20	39.80	31.96	-6.5%	16.4%
DACCADYE	13.2	12	13.685	10.0%	-3.5%	LANKABAFIN	34.40	36.70	28.67	-6.3%	20.0%
KDSALTD	70.4	66.8	66.625	5.4%	5.7%	GEMINISEA	511.90	544.60	497.40	-6.0%	2.9%
ICB	106.8	101.5	103.44	5.2%	3.2%	MIRACLEIND	30.60	32.40	31.11	-5.6%	-1.6%
PROGRESLIF	63	60	61.205	5.0%	2.9%	LAFSURCEMI	77.90	82.20	74.39	-5.2%	4.7%
UCB	21.3	20.3	20	4.9%	6.5%	ISLAMICFIN	13.90	14.60	14.65	-4.8%	-5.1%
SINGERBD	182.4	174.3	174.83	4.6%	4.3%	KAY&QUE	19.70	20.60	21.24	-4.4%	-7.3%
HAKKANIPUL	56.2	53.8	54.08	4.5%	3.9%	OAL	35.10	36.70	32.83	-4.4%	6.9%
CITYGENINS	14.1	13.5	14.465	4.4%	-2.5%	INTECH	13.20	13.80	13.23	-4.3%	-0.2%
FAREASTFIN	10.2	9.8	10.12	4.1%	0.8%	DULAMIACO1	6.80	7.10	7.10	-4.2%	-4.2%

AP= Average Price of last 20 day,% Δ in P from AP= percentage change in price from the 20-day average price

Industry /Sectors overview (Amounts in BDT. Crore)										
Sector	Trade Volume		MKT Turnover %		% Δ in Turnover	Market Capitalization		% of Total MC		% Δ in MC
	Today	Yesterday	Today	Yesterday		Today	Yesterday	Today	Yesterday	
Bank	59.39	29.96	0.13	0.05	98.3%	39678.37	39261.30	15.67%	15.43%	1.1%
Cement	23.32	31.44	0.05	0.06	-25.8%	15303.13	15745.81	6.04%	6.19%	-2.8%
Ceramics	10.70	19.72	0.02	0.04	-45.7%	2869.13	2870.96	1.13%	1.13%	-0.1%
Engineering	97.60	131.83	0.21	0.24	-26.0%	16321.65	16366.87	6.45%	6.43%	-0.3%
Food & Allied Product	16.14	22.43	0.03	0.04	-28.0%	24307.70	24653.47	9.60%	9.69%	-1.4%
Insurance	8.35	9.70	0.02	0.02	-13.9%	7327.63	7347.40	2.89%	2.89%	-0.3%
IT	10.18	8.04	0.02	0.01	26.6%	967.95	969.39	0.38%	0.38%	-0.1%
Jute	0.38	0.76	0.00	0.00	-49.9%	80.04	80.13	0.03%	0.03%	-0.1%
Miscellaneous	28.29	27.88	0.06	0.05	1.5%	8361.31	8392.94	3.30%	3.30%	-0.4%
Mutual Fund	3.97	3.86	0.01	0.01	2.9%	3665.88	3660.59	1.45%	1.44%	0.1%
NBFI	41.91	68.09	0.09	0.12	-38.5%	8431.90	8572.23	3.33%	3.37%	-1.6%
Paper & Printing	1.71	1.04	0.00	0.00	64.4%	195.16	189.87	0.08%	0.07%	2.8%
Pharmaceuticals & Chemicals	41.38	48.72	0.09	0.09	-15.1%	41930.40	42136.60	16.56%	16.56%	-0.5%
Power & Energy	43.58	64.87	0.09	0.12	-32.8%	33338.67	33708.79	13.17%	13.25%	-1.1%
Service & Real Estate	5.29	8.42	0.01	0.02	-37.1%	1716.66	1722.06	0.68%	0.68%	-0.3%
Tannery	2.59	2.79	0.01	0.01	-7.1%	2315.99	2315.52	0.91%	0.91%	0.0%
Telecommunication	5.31	8.03	0.01	0.01	-33.9%	36282.39	36388.45	14.33%	14.30%	-0.3%
Textile	63.54	54.52	0.13	0.10	16.6%	8093.58	8070.59	3.20%	3.17%	0.3%
Travel & Leisure	8.23	5.01	0.02	0.01	64.1%	2015.02	2001.28	0.80%	0.79%	0.7%

MC= Market Capitalization, % Δ in Turnover= change in turnover from last day, % Δ in MC= change in Market cap from last day

Index Movers	Index Shakers	Sector wise P/E (Fd.)			
HEIDELBCEM	LAFSURCEML	Bank	8.84	NBFI	39.93
UCB	BATBC	Cement	32.81	Paper & Printing	108.55
UPGDCL	TITASGAS	Ceramics	36.46	Pharmaceuticals & Chemicals	28.20
SINGERBD	GP	Engineering	57.04	Power & Energy	16.37
DUTCHBANGL	OLYMPIC	Food & Allied Product	30.88	Service & Real Estate	29.13
SOUTHEASTB	BXPHARMA	Insurance	13.52	Tannery	53.86
DHAKABANK	SQURPHARMA	IT	93.74	Telecommunication	26.69
SHAHJABANK	LANKABAFIN	Jute	163.52	Textile	17.58
BANKASIA	POWERGRID	Miscellaneous	36.17	Travel & Leisure	22.94
ICB	DESCO				

Important News

Company News:

DUTCHBANGL: Dividend Declaration: The Board of Directors has recommended 40% cash dividend for the year ended on December 31, 2015. Date of AGM: 30.03.2016, Time: 10:00 AM, Venue: Ballroom of Pan Pacific Sonargaon Hotel, Dhaka. Record date: 15.03.2016. The Company has also reported EPS of Tk. 15.10, NAV per share of Tk. 83.77 and NOCFPS of Tk. 214.64 for the year ended on December 31, 2015.

UCB: Dividend Declaration: The Board of Directors has recommended 20% cash dividend and 5% stock dividend for the year ended on December 31, 2015. Date of AGM: 31.03.2016, Time and Venue: To be notified later on. Record date: 15.03.2016. The Company has also reported Consolidated EPS of Tk. 4.00, Consolidated NAV per share of Tk. 25.56 and Consolidated NOCFPS of Tk. (4.30) for the year ended on December 31, 2015 as against Tk. 3.69, Tk. 26.93 and Tk. (1.82) respectively for the year ended on December 31, 2014.

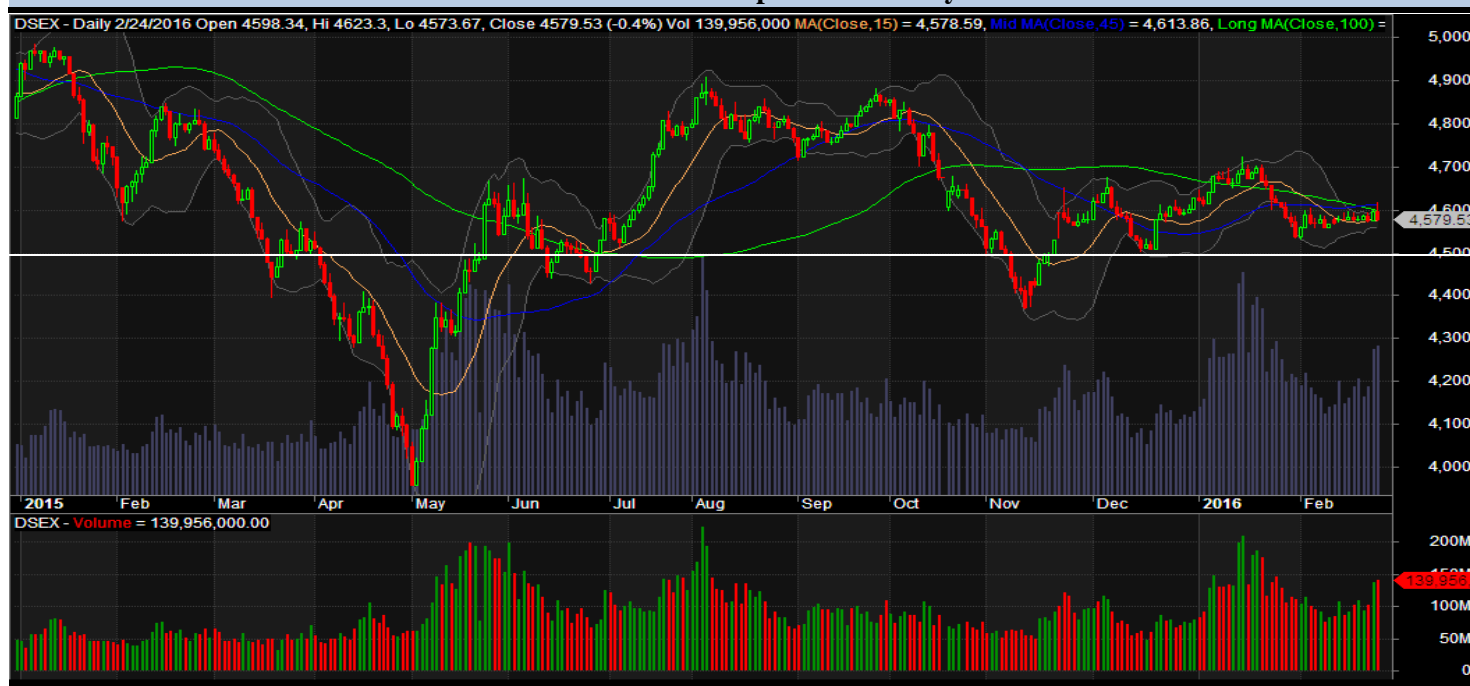
UNITEDAIR: Resumption of Operation of Flights: With reference to their earlier news disseminated by DSE on February 04, 2016, the Company has further informed that Flights of United Airways (BD) Limited to domestic destinations is resumed from February 24, 2016.

Recent Dividend Declaration

Ticker	Dividend	Record Date
Bangladesh Steel Re-Rolling Mills Ltd.	5% C & 10% B	03.03.16
BSRM Steels Ltd.	30% C	03.03.16
Green Delta Insurance Ltd.	25% C	06.03.16
Industrial Promotion & Development Co. of Bangladesh Ltd.	20% B	08.03.16
RAK Ceramics (Bangladesh) Ltd.	25% C	28.02.16

Note: C= cash Dividend, B= Bonus Dividend, R=Right, N/A=NotApplicable

DSEX Technical Graph for last one year



MTB CAPITAL LIMITED

Corporate head office

Level: 3, MTB Tower, 111, Kazi Nazrul Islam Avenue, Dhaka

Phone: 8321714, Fax: 8321543

www.mtbcap.com

A Mutual Trust Bank Company

you can invest with us

Disclaimer

This report has been prepared by the MTB Capital Limited (MTBCL) on the basis of available information in the market and it is provided for the purposes only. It is not to be used as an offer for buying or selling any instruments. If anyone takes any action relying on this information, shall be responsible solely by him/her self for any consequences. The best care has been taken to make the report informative. MTBCL doesn't give any warrant or guarantee that the report or such information is fully accurate. The information that are provided here is the exclusive property of MTBCL and can not be distributed without prior consent of MTBCL.