

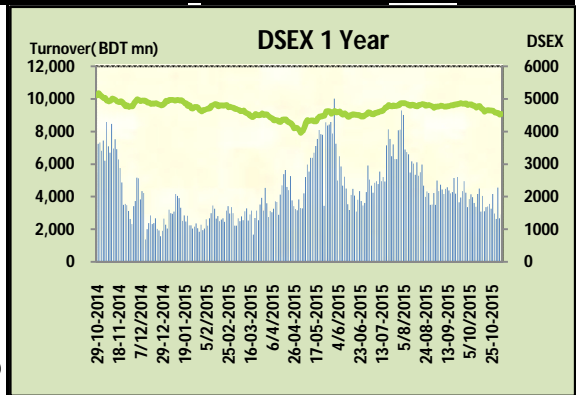
Today's Market Overview

Monday, November 02, 2015



DSEX	4,536.05	0.47%	Issues Traded	Advanced	Declined	Unchanged
Turnover (BDT mn)	2,905.23	8.5%		165	102	51



Market found the green zone after five days consecutive fall with a slightly improved turnover. The premier bourse of the nation opened with positive mood but failed to sustain less than an hour and returned back into the red zone during the last hour it started to climb up thus completed a green day. Most of the major sectors observed gain today while Bank, Travel & IT failed to put gain. Maximum number of investors remained out of the market while some of them were busy in choppy trading. Other two indices DS30 & DSES the shariah based index both performed positive. Among the major sectors Cement was the best gainer followed by Ceramics & Engineering. The general gauge DSEX ended at 4536.05 with an advance of +0.5% which added 21.20 points to the broad DSEX. The Turnover advanced slightly by +8.5% which was 227 Million BDT healthier than that of previous day and finally finished the mark at 2905.23 million BDT. A total of 165 issues advanced with 102 declined and 51 remained unchanged. Sectors that improved were: Cement (+2.2%) Ceramics (+2.1%) Engineering (+2.1%) Miscellaneous (+1.9%) Pharmaceuticals (+0.8%) Power (+0.2%) Telecom (+1.0%) Service (+1.3%) & sectors that declined were: Bank (-0.6%) NBFI (-0.1%) Travel (-0.5%) IT (-1.9%) IFADAUTOS topped in the Volume chart with a turnover of 25.78 BDT crore. HAKKANIPULP ranked top gainer chart with a price hike of +9.9% and SHYAMPSUG topped in the loser chart with a decline of -8.6% from its prevailing price. GP led the way in the index mover chart while POWERGRID played the shatter part.



Index Scenario				Market Highlights			
INDEX	Change	% Changes		DSEX 52 week H/L	5334/3960	Market P/E (LTM)	14.54
DSEX	4536.05	21.20	0.5%	DSEX Week H/L	4589/4514	M.Cap (mn)	3157293.5
DSES	1092.26	10.98	1.0%	Group Performances			
DS30	1722.49	13.46	0.8%	Category	Mkt Cap (mn.)	Δ % M.Cap	Turnover BDT (mn)
Turnover Scenario				Group A	2,435,728.77	0.6%	2,346.10
Today's Turnover (mn.)	Change In BDT (mn.)	% Change		Group B	13,322.74	1.0%	121.29
2905.23	227	8.5%		Group N	29,571.01	2.0%	392.22
				Group Z	22,823.35	0.2%	41.95

Top Ten Volume (in BDT. crore)										
Stock	TT	YT	AT	% Δ in Turnover	TT/AT	CP	YP	% Δ P	Number of shares	Public Holding
IFADAUTOS	25.78	9.63	6.24	167.8%	313.1%	116.5	111.7	4.3%	115,000,000.0	17%
SQURPHARMA	18.23	5.70	8.30	219.5%	119.6%	247.1	244.1	1.2%	623,586,546.0	9%
GP	10.30	3.57	8.27	188.1%	24.6%	251.4	248.9	1.0%	1,350,300,022.0	4%
LAFSURCEML	9.70	10.33	17.32	-6.1%	-44.0%	85.5	83.1	2.9%	1,161,373,500.0	30%
BXPHARMA	7.54	5.90	15.51	27.7%	-51.4%	72.2	71.2	1.4%	386,244,234.6	50%
KDSALTD	6.79	7.70	12.80	-11.8%	-47.0%	62.8	65	-3.4%	52,000,000.0	21%
MHSML	5.99	1.74	6.66	244.3%	-10.1%	38.9	38.8	0.3%	78,093,750.0	40%
QSMDDRYCELL	5.71	3.76	2.51	51.8%	127.6%	77.4	74.5	3.9%	36,799,488.0	54%
SAMORITA	5.51	8.18	1.44	-32.6%	282.6%	88.7	94.6	-6.2%	14,856,543.9	18%
KPCL	5.47	11.47	4.83	-52.3%	13.2%	73.7	73.7	0.0%	361,284,710.0	13%

TT= Today's Turnover in crore, YT= Yesterday's Turnover in Crore, AT= Average of Last 20 day's Turnover, CP= Current Price, YP= Yesterday's Price, % Δ P= percentage change in price

<div>  Top Ten Gainer </div>						<div> Top Ten Loser  </div>					
Stock	CP	YP	AP	% Δ P	% Δ in P from AP	Stock	CP	YP	AP	% Δ P	% Δ in P from AP
HAKKANIPUL	44.6	40.6	46.41	9.9%	-3.9%	SHYAMPSUG	6.40	7.00	6.78	-8.6%	-5.6%
ANWARGALV	67.4	61.4	69.295	9.8%	-2.7%	DAFODILCOM	17.30	18.90	18.11	-8.5%	-4.5%
MONNOCERA	36.2	33.3	39.795	8.7%	-9.0%	BDAUTOCA	33.20	36.00	36.11	-7.8%	-8.0%
STANDARINS	16.5	15.2	16.27	8.6%	1.4%	RAHIMAFOOI	41.20	44.20	47.88	-6.8%	-14.0%
IMAMBUTTON	8.9	8.3	12.04	7.2%	-26.1%	SAMORITA	88.70	94.60	80.48	-6.2%	10.2%
FARCHEM	28.3	26.4	36.27	7.2%	-22.0%	MIRACLEIND	25.70	27.40	19.54	-6.2%	31.6%
ALLTEX	20.7	19.4	19.15	6.7%	8.1%	AGRANINS	13.60	14.40	14.49	-5.6%	-6.1%
GOLDENSON	26.5	24.9	26.545	6.4%	-0.2%	TALLUSPIN	22.20	23.50	22.84	-5.5%	-2.8%
GOLDENSON	26.5	24.9	26.545	6.4%	-0.2%	NITOLINS	21.40	22.50	22.04	-4.9%	-2.9%
STANCERAM	51.8	48.7	48.63	6.4%	6.5%	MALEKSPIN	16.30	17.10	17.64	-4.7%	-7.6%

AP= Average Price of last 20 day,% Δ in P from AP= percentage change in price from the 20-day average price

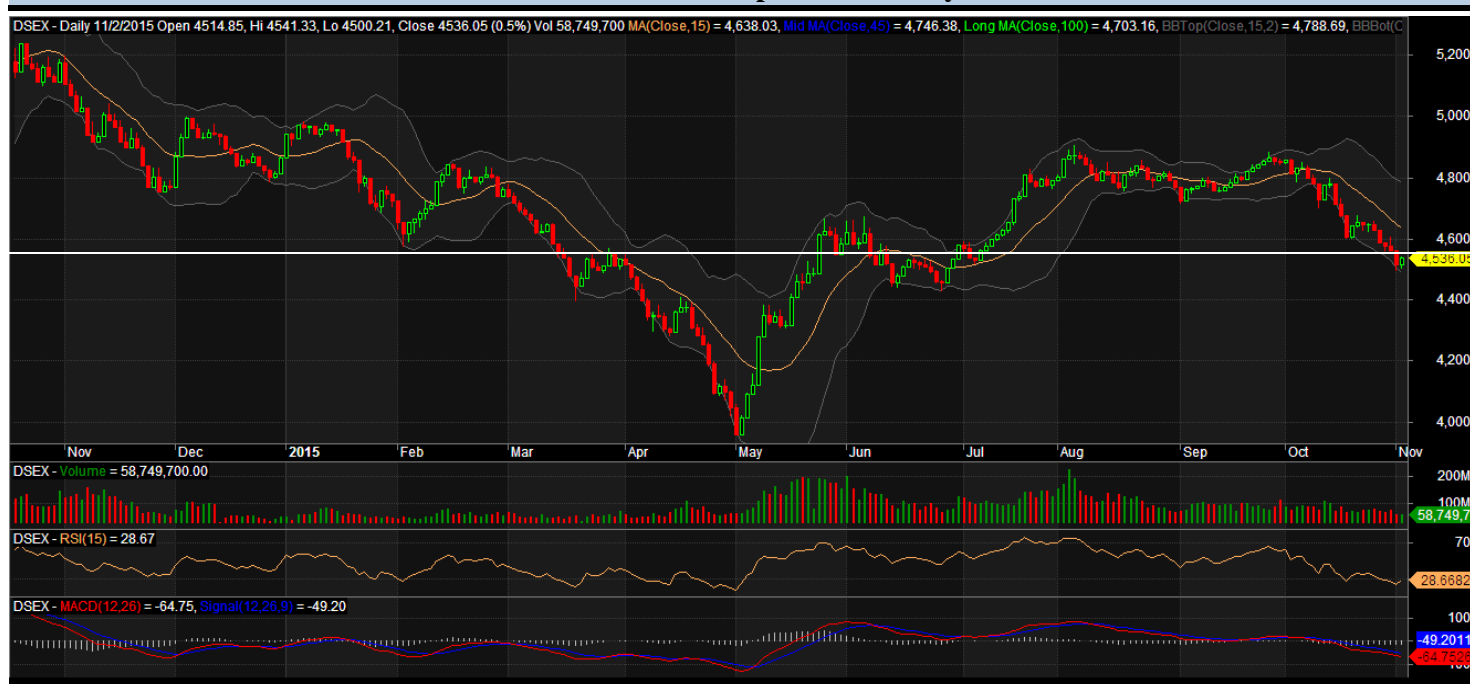
Industry /Sectors overview (Amounts in BDT. Crore)										
Sector	Trade Volume		MKT Turnover %		% Δ in Turnover	Market Capitalization		% of Total MC		% Δ in MC
	Today	Yesterday	Today	Yesterday		Today	Yesterday	Today	Yesterday	
Bank	18.53	17.81	0.06	0.07	4.1%	39800.60	40044.18	15.93%	16.13%	-0.6%
Cement	13.90	13.47	0.05	0.05	3.2%	16035.26	15697.40	6.42%	6.32%	2.2%
Ceramics	3.54	2.39	0.01	0.01	48.3%	2651.04	2595.30	1.06%	1.05%	2.1%
Engineering	66.09	44.55	0.23	0.17	48.4%	14458.29	14154.80	5.79%	5.70%	2.1%
Food & Allied Product	8.73	9.92	0.03	0.04	-12.0%	23871.84	23730.33	9.56%	9.56%	0.6%
Insurance	2.97	3.45	0.01	0.01	-13.8%	6780.23	6779.21	2.71%	2.73%	0.0%
IT	1.65	2.68	0.01	0.01	-38.4%	486.46	495.86	0.19%	0.20%	-1.9%
Jute	0.61	1.16	0.00	0.00	-47.1%	90.02	90.98	0.04%	0.04%	-1.1%
Miscellaneous	17.71	20.75	0.06	0.08	-14.6%	8077.94	7928.01	3.23%	3.19%	1.9%
Mutual Fund	4.63	5.37	0.02	0.02	-13.8%	3488.71	3464.78	1.40%	1.40%	0.7%
NBFI	8.34	8.53	0.03	0.03	-2.3%	7757.46	7767.06	3.11%	3.13%	-0.1%
Paper & Printing	1.46	1.43	0.01	0.01	1.9%	197.22	191.08	0.08%	0.08%	3.2%
harmaceuticals & Chemica	48.01	29.66	0.17	0.11	61.8%	40093.55	39774.99	16.05%	16.02%	0.8%
Power & Energy	33.65	45.52	0.12	0.17	-26.1%	36150.15	36076.57	14.47%	14.53%	0.2%
Service & Real Estate	11.62	13.20	0.04	0.05	-12.0%	1833.37	1810.51	0.73%	0.73%	1.3%
Tannery	1.87	3.12	0.01	0.01	-40.1%	2463.17	2434.00	0.99%	0.98%	1.2%
Telecommunication	11.33	4.65	0.04	0.02	143.9%	35538.63	35177.07	14.23%	14.17%	1.0%
Textile	28.42	31.35	0.10	0.12	-9.4%	7940.15	7922.13	3.18%	3.19%	0.2%
Travel & Leisure	5.23	5.83	0.02	0.02	-10.3%	2072.19	2081.59	0.83%	0.84%	-0.5%

MC= Market Capitalization, % Δ in Turnover= change in turnover from last day, % Δ in MC= change in Market cap from last day

Index Movers		Index Shakers	Sector wise P/E			
GP	POWERGRID		Bank	9.41	NBFI	35.70
LAFSURCEML	ISLAMIBANK		Cement	35.47	Paper & Printing	59.05
SQURPHARMA	CITYBANK		Ceramics	47.58	Pharmaceuticals & Chemicals	28.61
BERGERPBL	UCBL		Engineering	28.34	Power & Energy	15.03
BSRMLTD	SOUTHEASTB		Food & Allied Product	32.14	Service & Real Estate	44.77
SPCL	BANKASIA		Insurance	14.77	Tannery	52.98
OLYMPIC	GLAXOSMITH		IT	17.34	Telecommunication	24.01
HEIDELBCEM	PUBALIBANK		Jute	113.26	Textile	17.97
BATBC	MALEKSPIN		Miscellaneous	35.69	Travel & Leisure	13.76
IFADAUTOS	MICEMENT					

Important News	Recent Dividend Declaration		
	Ticker	Dividend	Record Date
Company News: UNITEDAIR: Credit Rating Result: Credit Rating Agency of Bangladesh Limited (CRAB) has announced the Entity, Long Term and Short Term rating (surveillance rating) of the Company as Suspended due to insufficiency of financial and operational information during 2015 as the last published information was for 31st December, 2014.	Paramount Textile Limited	16% C	15.11.2015
	IFAD Autos Limited	7% C & 30% B	15.11.2015
	Aamra technologies limited	10% C	16.11.2015
	Anlimayam Deying Ltd.	10% C	15.11.15
	Rahim Textile Mills Ltd.	40% B	17.11.15
	CVO Petrochemical Refinery Limited	15% C & 25% B	15.11.15
	Fu-Wang Foods Limited	15% B	19.11.15
	Others PP Woven Bag Industries	15% B	23.11.15
Note: C= cash Dividend, B= Bonus Dividend, R=Right, N/A=NotApplicable			

DSEX Technical Graph for last one year



MTB CAPITAL LIMITED

Corporate head office

Level: 3, MTB Tower, 111, Kazi Nazrul Islam Avenue, Dhaka

Phone: 8321714, Fax: 8321543

www.mtbcap.com

A mutual Trust Bank Company

you can invest with US

Disclaimer

This report has been prepared by the MTB Capital Limited (MTBCL) on the basis of available information in the market and it is provided for the purposes only. It is not to be used as an offer for buying or selling any instruments. If anyone takes any action relying on this information, shall be responsible solely by him/her self for any consequences. The best care has been taken to make the report informative. MTBCL doesn't give any warrant or guarantee that the report or such information is fully accurate. The information that are provided here is the exclusive property of MTBCL and can not be distributed without prior consent of MTBCL.