

Today's Market Overview

Sunday, March 06, 2016

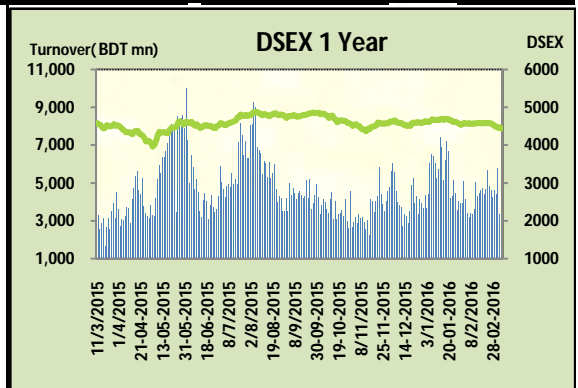


DSEX	4,435.47	-0.84%	Issues Traded	Advanced	Declined	Unchanged
Turnover (BDT mn)	3,002.02	-10.91%		84	190	37

Market returned to the red zone with a very sluggish turnover. Turnover was lowest in last 54 trading days and managed only 3 billion as market suffered in ill confidence and panic sale. DSEX hit the lowest mark in last 78 trading days from the mid November of last year. The premier bourse of the nation opened with a negative mood and continued the same mood till the closure. Market plunged dip in late hour as it failed to opt any buoyancy. Some major sectors like Engineering, Pharmaceuticals & NBFI faced severity from the investors. Investors' sentiment in trading actually disallowed the bourse to improve as recent trading tendency and investment tenure from general investors became narrower, probably for couple of days. This trading mentality led them to pick quick gain or less as they were not in a situation to trust the market. Moreover big paid up stocks stumbled in absence of sensible participation from big investors and institutions. All the major sectors failed to sustain except Telecom. After dividend performance of some stocks also perplexed the investors and most of them were in outside of the market. Engineering was the worst loser followed by Travel & Service. Other two indices DS30 & DSES the shariah based index both performed poor.

The general gauge DSEX ended at 4435.47 with a decline of -0.84% which cut 37.37 points from the broad DSEX. The Turnover declined heavily by -10.9% which was 368 Million BDT poorer than that of previous day and finally finished the mark at 3002.02 million BDT. A total of 84 issues advanced with 190 declined and 37 remained unchanged. Sectors that improved were: Cement (+0.4%) IT (+2.0%) Jute (+1.8%) Telecom (+1.4%) & Sectors that declined were: Bank (-0.7%) Ceramics (-0.2%) Engineering (-6.3%) Food (-1.0%) Insurance (-0.9%) NBFI (-1.2%) Pharmaceuticals (-1.1%) Power (-0.9%) Service (-1.8%) Textiles (-0.2%) Travel (-2.2%) Miscellaneous (-0.8%)

BSRMLTD topped in the Volume chart with a turnover of 32.05 BDT crore. LIBRAINFU ranked top gainer chart with a price hike of +8.7% and BSRMLTD topped in the loser chart with a decline of -17.9% from its prevailing price. GP led the way in the index mover chart while BSRMLTD played the shatter part.



Index Scenario				Market Highlights				
INDEX		Change	% Changes	DSEX 52 week H/L		4992/3960	Market P/E (LTM)	14.06
DSEX	4435.47	(37.37)	-0.8%	DSEX Week H/L		4512/4435	M.Cap (mn)	3085487.5
				Group Performances				
DSES	1078.86	(7.51)	-0.7%	Category	Mkt Cap (mn.)	Δ % M.Cap	Turnover BDT (mn)	Δ % Turnover
DS30	1703.77	(14.92)	-0.9%	Group A	2,370,469.86	-0.8%	2,645.27	-7.9%
Turnover Scenario				Group B	11,904.87	-1.1%	55.06	-41.4%
Today's Turnover (mn.)	Change In BDT (mn.)		% Change	Group N	34,608.38	-1.0%	258.07	28.0%
3002.02	(368)		-10.9%	Group Z	33,162.95	-1.1%	34.72	-12.6%

Top Ten Volume (in BDT. crore)										
Stock	TT	YT	AT	% Δ in Turnover	TT/AT	CP	YP	% Δ P	Number of shares	Public Holding
BSRMLTD	32.05	NT	22.38	NM	43.2%	167.4	204	-17.9%	173,351,038.0	9%
LAFSURCEML	14.24	8.28	10.13	72.0%	40.5%	73.5	72.9	0.8%	1,161,373,500.0	30%
LANKABAFIN	12.96	23.84	15.72	-45.7%	-17.6%	39	39.2	-0.5%	240,643,434.9	61%
IFADAUTOS	9.64	6.25	11.61	54.1%	-17.0%	92.1	94.1	-2.1%	149,500,000.0	17%
QSMRDYCELL	9.35	11.56	8.43	-19.2%	10.8%	92.8	98.5	-5.8%	40,479,436.8	54%
CMCKAMAL	9.16	8.70	6.69	5.3%	36.9%	21.3	19.7	8.1%	96,811,412.6	59%
ORIONPHARM	8.90	17.83	6.28	-50.1%	41.6%	39	41.3	-5.6%	234,000,000.0	44%
ONEBANKLTD	8.11	2.25	3.87	260.1%	109.3%	15.8	15.6	1.3%	589,924,914.8	50%
AMANFEED	7.54	5.38	7.36	40.2%	2.3%	54.9	56.2	-2.3%	80,000,000.0	23%
UPGDCL	7.40	17.48	15.03	-57.6%	-50.7%	162	164.2	-1.3%	362,944,698.6	5%

TT= Today's Turnover in crore, YT= Yesterday's Turnover in Crore, AT= Average of Last 20 day's Turnover, CP= Current Price, YP= Yesterday's Price, % Δ P= percentage change in price

Top Ten Gainer						Top Ten Looser					
Stock	CP	YP	AP	% Δ P	% Δ in P from AP	Stock	CP	YP	AP	% Δ P	% Δ in P from AP
LIBRAINFU	417.4	383.9	459.57	8.7%	-9.2%	BSRMLTD	167.40	204.00	166.94	-17.9%	0.3%
SHYAMPSUG	6.6	6.1	6.41	8.2%	3.0%	AZIZPIPES	30.50	33.20	34.72	-8.1%	-12.2%
CMCKAMAL	21.3	19.7	18.16	8.1%	17.3%	PROGRESLIF	58.60	63.50	61.50	-7.7%	-4.7%
GEMINISEA	567.8	528.2	557.345	7.5%	1.9%	WATACHEM	154.70	167.60	165.18	-7.7%	-6.3%
EASTRNLUB	586.9	546	596.45	7.5%	-1.6%	ASIAPACINS	14.30	15.30	15.14	-6.5%	-5.5%
ITC	50.2	47.8	52.975	5.0%	-5.2%	SINOBANGLA	34.00	36.30	34.17	-6.3%	-0.5%
ZAHEENSPIN	26.2	25.1	22.985	4.4%	14.0%	BDAUTOCA	26.10	27.80	30.44	-6.1%	-14.3%
SAMATALETH	25.2	24.2	25.88	4.1%	-2.6%	BSRMSTEEL	85.70	91.20	90.15	-6.0%	-4.9%
ANWARGALV	69.3	66.8	74.415	3.7%	-6.9%	QSMDDRYCELI	92.80	98.50	116.92	-5.8%	-20.6%
7THICB	111.1	107.1	110.865	3.7%	0.2%	ORIONPHARM	39.00	41.30	36.99	-5.6%	5.4%

AP= Average Price of last 20 day,% Δ in P from AP= percentage change in price from the 20-day average price

Industry /Sectors overview (Amounts in BDT. Crore)

Sector	Trade Volume		MKT Turnover %		% Δ in	Market Capitalization		% of Total MC		% Δ in
	Today	Yesterday	Today	Yesterday	Turnover	Today	Yesterday	Today	Yesterday	MC
Bank	26.96	25.65	0.09	0.08	5.1%	38195.01	38467.30	15.62%	15.60%	-0.7%
Cement	17.85	13.79	0.06	0.04	29.5%	14476.57	14416.03	5.92%	5.85%	0.4%
Ceramics	3.30	5.51	0.01	0.02	-40.0%	2636.09	2642.02	1.08%	1.07%	-0.2%
Engineering	74.18	43.52	0.25	0.14	70.5%	15140.91	16153.73	6.19%	6.55%	-6.3%
Food & Allied Product	9.03	11.49	0.03	0.04	-21.5%	23189.54	23413.13	9.48%	9.49%	-1.0%
Insurance	7.42	7.62	0.03	0.02	-2.6%	7340.61	7404.59	3.00%	3.00%	-0.9%
IT	7.64	6.24	0.03	0.02	22.3%	926.63	908.87	0.38%	0.37%	2.0%
Jute	0.42	0.47	0.00	0.00	-10.2%	80.87	79.47	0.03%	0.03%	1.8%
Miscellaneous	14.44	13.60	0.05	0.04	6.2%	8234.25	8298.66	3.37%	3.36%	-0.8%
Mutual Fund	1.63	2.17	0.01	0.01	-24.7%	3636.47	3638.96	1.49%	1.48%	-0.1%
NBFI	23.93	41.38	0.08	0.13	-42.2%	8350.58	8451.44	3.41%	3.43%	-1.2%
Paper & Printing	0.54	0.60	0.00	0.00	-10.4%	187.97	190.57	0.08%	0.08%	-1.4%
harmaceuticals & Chemicals	34.05	52.81	0.12	0.17	-35.5%	40905.21	41343.53	16.72%	16.76%	-1.1%
Power & Energy	30.88	50.84	0.11	0.16	-39.3%	32489.49	32783.96	13.28%	13.29%	-0.9%
Service & Real Estate	3.44	2.87	0.01	0.01	19.9%	1659.30	1690.50	0.68%	0.69%	-1.8%
Tannery	0.80	0.79	0.00	0.00	1.5%	2203.68	2220.23	0.90%	0.90%	-0.7%
Telecommunication	5.58	4.23	0.02	0.01	31.9%	35121.13	34652.44	14.36%	14.05%	1.4%
Textile	25.31	29.77	0.09	0.09	-15.0%	7863.17	7881.59	3.21%	3.20%	-0.2%
Travel & Leisure	4.43	2.67	0.02	0.01	65.8%	1942.13	1985.73	0.79%	0.81%	-2.2%

MC= Market Capitalization, % Δ in Turnover= change in turnover from last day, % Δ in MC= change in Market cap from last day

Index Movers	Index Shakers	Sector wise P/E (Fd.)			
GP	BSRMLTD	Bank	8.53	NBFI	41.39
LAFSURCEML	BSRMSTEEL	Cement	31.08	Paper & Printing	100.79
PRIMEBANK	BATBC	Ceramics	35.84	Pharmaceuticals & Chemicals	27.13
DHAKABANK	MARICO	Engineering	54.42	Power & Energy	15.39
BSCCL	BRACBANK	Food & Allied Product	29.49	Service & Real Estate	28.74
ITC	SQURPHARMA	Insurance	13.44	Tannery	52.50
CMCKAMAL	UPGDCL	IT	89.40	Telecommunication	26.43
SHAHJABANK	RENATA	Jute	149.89	Textile	17.07
ONEBANKLTD	EBL	Miscellaneous	35.52	Travel & Leisure	21.15
UCB	SUMITPOWER				

Important News

Company News:

LAFSURCEML: Dividend Declaration: The Board of Directors has recommended 5% final cash dividend (i.e. total 10% cash dividend for the year 2015 inclusive of 5% interim cash dividend which has already been paid) for the year ended on December 31, 2015. Date of AGM: 16.06.2016, Time: 11:00 AM, Venue: RAOVA Convention Hall No. 1 (HELMET), VIP Road, Mohakhali, Dhaka-1206. Record Date: 13.04.2016. The Company has also reported Consolidated Profit of Tk. 2,289.53 million, Consolidated EPS of Tk. 1.97, Consolidated NAV per share of Tk. 12.37 and Consolidated NOCFPS of Tk. 2.92 for the year ended on December 31, 2015 as against Tk. 2,819.80 million, Tk. 2.43, Tk. 11.41 and Tk. 3.07 respectively for the year ended on December 31, 2014

WATACHEM: Dividend Declaration: The Board of Directors has recommended 10% cash & 10% stock dividend for the year ended on 31.12.2015. Date of AGM: 16.04.2016, Time: 11:00 AM, Venue: Will be notified later. Record Date: 29.03.2016. The Company has also reported Net Profit after Tax of Tk. 31.64 million, EPS of Tk. 4.01, NAV per share of Tk. 81.86 and NOCFPS of Tk. 5.46 for the year ended on 31.12.15 as against Tk. 36.57 million, Tk. 4.63 (restated), Tk. 77.85 (restated) and Tk. 2.78 (restated) respectively for the year ended on 31.12.14.

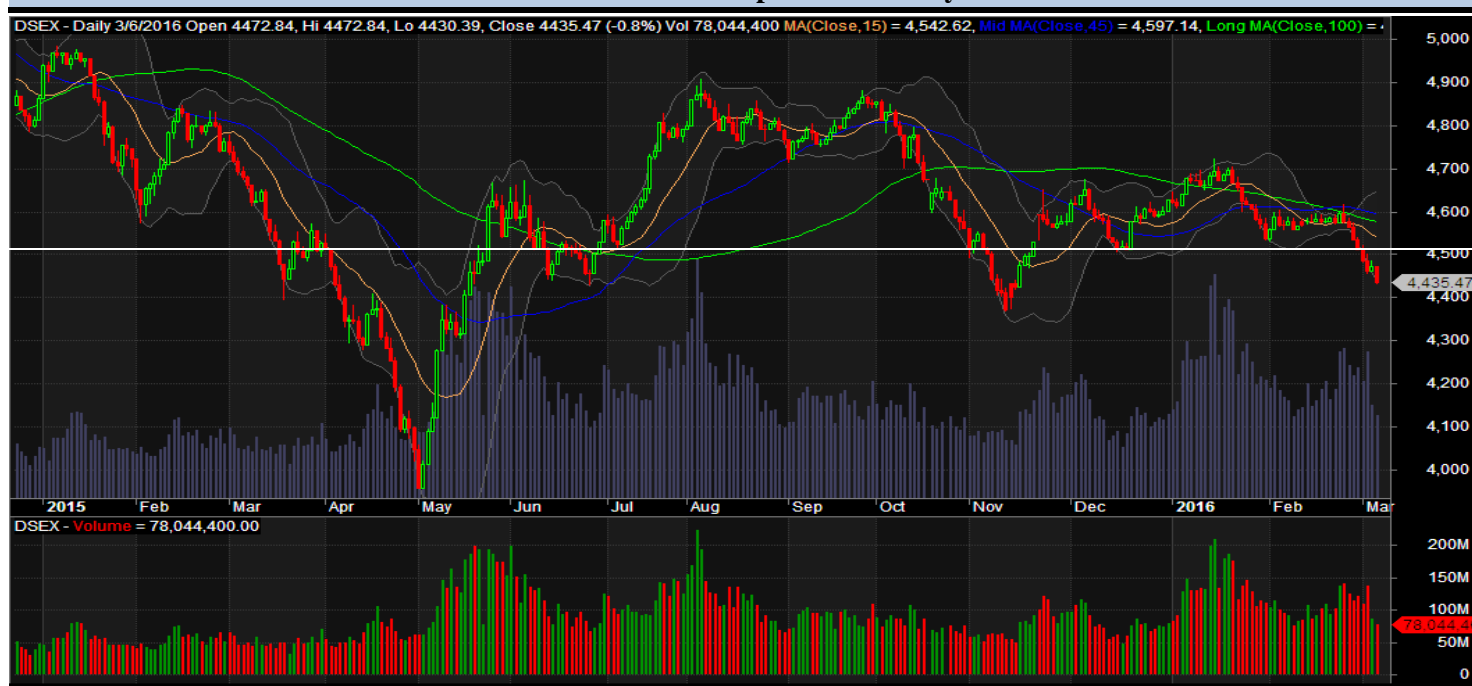
UNITEDAIR: Non-operation of Flights: With reference to their earlier news disseminated by DSE on February 24, 2016, the Company has further informed that Flights of United Airways (BD) Limited become inoperative from March 05, 2016 due to unavoidable circumstances.

Recent Dividend Declaration

Ticker	Dividend	Record Date
Green Delta Insurance Ltd.	25% C	06.03.16
Industrial Promotion & Development Co. of Bangladesh Ltd.	20% B	08.03.16

Note: C= cash Dividend, B= Bonus Dividend, R=Right, N/A=NotApplicable

DSEX Technical Graph for last one year



MTB CAPITAL LIMITED

Corporate head office

Level: 3, MTB Tower, 111, Kazi Nazrul Islam Avenue, Dhaka

Phone: 8321714, Fax: 8321543

www.mtbcap.com

A Mutual Trust Bank Company

you can invest with us

Disclaimer

This report has been prepared by the MTB Capital Limited (MTBCL) on the basis of available information in the market and it is provided for the purposes only. It is not to be used as an offer for buying or selling any instruments. If anyone takes any action relying on this information, shall be responsible solely by him/her self for any consequences. The best care has been taken to make the report informative. MTBCL doesn't give any warrant or guarantee that the report or such information is fully accurate. The information that are provided here is the exclusive property of MTBCL and can not be distributed without prior consent of MTBCL.