

# Today's Market Overview

Tuesday, September 27, 2016

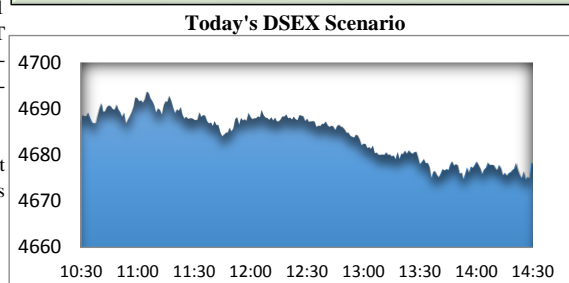
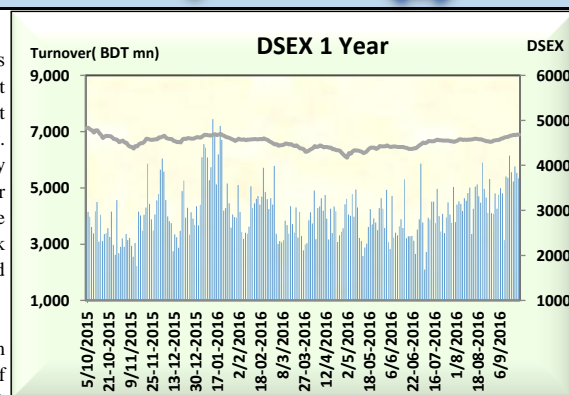


<b>DSEX</b>	<b>4,677.69</b>	<b>-0.13%</b>	<b>Issues Traded</b>	<b>Advanced</b>	<b>Declined</b>	<b>Unchanged</b>
<b>Turnover (BDT mn)</b>	<b>5,342.12</b>	<b>-3.39%</b>		<b>105</b>	<b>181</b>	<b>38</b>

Selling frenzy behavior from sellers compelled the market to bounce back in red zone after previous day's upturn with a slightly declined turnover. The premier bourse of the nation opened with positive mood but soon after the first hour sellers failed to keep their temptation to book quick gain. Almost all of the sectors got slight price correction, some major sectors like Bank, NBFI, Telecom & Engineering observed slight severity, though small cap stocks investors shown more discomfort with their holdings. Among the major sectors only Engineering & Food observed improved concentration while others faced offloading tendency. Late hour shaky confidence pushed the market in red zone and investors were in hesitant to put gained fund in the market, thus led to a declined turnover. Among the other two indices DS30 succeed to obtain green mark while DSES the shariah based index failed to perform. IT was the best gainer followed by Travel & Food while NBFI was the worst loser followed by paper & Jute.

The general gauge DSEX ended at 4677.69 with a decline of -0.13% which deducted only 6.31 points from the broad DSEX. The Turnover declined slightly by -3.39% which was 187 million BDT poorer than that of previous day and finally finished the mark at 5342.12 million BDT. A total of 105 issues advanced with 181 declined & 38 remained unchanged. Sectors that improved were: Cement (+0.08%) Food (+0.67%) IT (+2.95%) Miscellaneous (+0.73%) Power (+0.01%) Travel (+1.26%) & Sectors that declined were: Bank (-0.57%) Ceramics (-0.64%) Engineering (-0.54%) Insurance 9-0.44%) Jute (-1.16%) NBFI (-1.25%) Paper (-1.15%) Pharmaceuticals (-0.03%) Service (-0.10%) Tannery (-1.09%) Telecom (-0.67%) Textiles (-0.53%).

YPL topped in the Volume chart with a turnover of 28.60 BDT crore. PRIMETEX ranked top in gainer chart with a price hike of +7.0% and SAVAREFR topped in the loser chart with a decline of -8.4 % from its prevailing price. OLYMPIC led the way in the index mover chart while GP played the shatter part.



Index Scenario						Market Highlights				
INDEX			Change	% Changes		DSEX 52 week H/L		4874/3960	Market P/E (LTM)	13.87
DSEX	4677.69		(6.31)	-0.13%		DSEX Week H/L		4680/4623	M.Cap	3273947.4
	Group Performances									
DSES	1122.40		(0.23)	-0.02%		Category	Mkt Cap (mn.)	Δ % M.Cap	Turnover BDT (mn)	Δ % Turnover
DS30	1775.06		3.56	0.20%		Group A	2,508,732.11	-0.2%	4,235.01	-5.9%
Turnover Scenario						Group B	11,462.49	-0.7%	132.89	-31.4%
Today's Turnover (mn.)		Change In BDT (mn.)		% Change		Group N	66,713.68	-6.2%	373.39	-40.0%
5342.12		(187)		-3.39%		Group Z	38,654.85	0.0%	132.19	74.7%
Top Ten Volume (in BDT. crore)										
Stock	TT	YT	AT	% Δ in Turnover	TT/AT	CP	YP	% Δ P	Number of shares	Public Holding
YPL	28.60	9.11	16.43	<div>213.9%</div>	74.1%	40.6	44.8	<div>-9.4%</div>	274,244,180.0	9%
BSCCL	23.28	15.06	8.31	<div>54.6%</div>	180.2%	126.1	125.3	<div>0.6%</div>	362,944,698.6	5%
BEXIMCO	14.21	2.07	2.45	<div>586.0%</div>	480.9%	23.8	23	<div>3.5%</div>	15,218,280.0	19%
OAL	13.10	6.61	3.83	<div>98.1%</div>	242.3%	24	23.7	<div>1.3%</div>	341,775,000.0	13%
SINGERBD	12.07	8.50	8.61	<div>42.0%</div>	40.2%	189.1	192.4	<div>-1.7%</div>	190,686,141.8	9%
LANKABAFIN	12.05	18.63	7.18	<div>-35.3%</div>	67.9%	32.3	32.8	<div>-1.5%</div>	276,739,950.1	61%
BSC	11.71	13.78	6.08	<div>-15.0%</div>	92.6%	500.8	494.5	<div>1.3%</div>	137,132,037.0	19%
AMANFEED	10.94	6.32	4.86	<div>73.0%</div>	125.1%	80.3	79.2	<div>1.4%</div>	190,417,988.2	27%
OLYMPIC	9.95	2.90	8.03	<div>243.2%</div>	23.9%	304.8	296.8	<div>2.7%</div>	294,400,000.0	24%
MJLBD	8.82	10.44	14.57	<div>-15.5%</div>	-39.4%	114.1	114.4	<div>-0.3%</div>	54,285,000.0	38%
TT= Today's Turnover in crore, YT= Yesterday's Turnover in Crore, AT= Average of Last 20 day's Turnover, CP= Current Price, YP= Yesterday's Price, % Δ P= percentage change in price										

TT= Today's Turnover in crore, YT= Yesterday's Turnover in Crore, AT= Average of Last 20 day's Turnover, CP= Current Price, YP= Yesterday's Price, % Δ P= percentage change in price

Top Ten Gainer						Top Ten Loser					
Stock	CP	YP	AP	% Δ P	% Δ in P from AP	Stock	CP	YP	AP	% Δ P	% Δ in P from AP
PRIMETEX	23	21.5	20.82	7.0%	10.5%	SAVAREFR	40.50	44.20	47.45	-8.4%	-14.6%
APEXSPINN	127.8	120.4	108.09	6.1%	18.2%	MODERNDYE	228.10	248.70	258.26	-8.3%	-11.7%
PENINSULA	16.8	15.9	15.3	5.7%	9.8%	NHFIL	42.20	44.70	36.34	-5.6%	16.1%
DAFODILCOM	25.9	24.6	22.905	5.3%	13.1%	GSPFINANCE	18.40	19.20	14.92	-4.2%	23.3%
FUWANGFOOD	14.4	13.7	13.415	5.1%	7.3%	GREENDELT	50.80	52.80	48.05	-3.8%	5.7%
MEGHNAPET	25.1	5.6	5.945	3.6%	-2.4%	DSSL	10.40	10.80	NM	-3.7%	NM
ITC	50.5	48.8	48.945	3.5%	3.2%	TOSRIFA	21.50	22.30	20.30	-3.6%	5.9%
BEXIMCO	23.8	23	22.875	3.5%	4.0%	JUTESPINN	54.00	56.00	58.14	-3.6%	-7.1%
BDAUTOCA	46.5	45	45.465	3.3%	2.3%	ZAHEENSPIN	16.70	17.30	16.45	-3.5%	1.5%
SEMLLECMF	10.3	10	NM	3.0%	NM	TALLUSPIN	14.80	15.30	14.32	-3.3%	3.4%

AP= Average Price of last 20 day,% Δ in P from AP= percentage change in price from the 20-day average price

**Industry /Sectors overview (Amounts in BDT. Crore)**

Sector	Trade Volume		MKT Turnover %		% Δ in Turnover	Market Capitalization		% of Total MC		% Δ in MC		
	Today	Yesterday	Today	Yesterday		Today	Yesterday	Today	Yesterday			
Bank	38.97	48.53	0.08	0.09	<div><div></div></div>	-19.70%	43983.85	44234.42	16.76%	16.82%	<div><div></div></div>	-0.57%
Cement	9.70	11.47	0.02	0.02	<div><div></div></div>	-15.49%	15057.11	15044.66	5.74%	5.72%	<div><div></div></div>	0.08%
Ceramics	4.89	3.43	0.01	0.01	<div><div></div></div>	42.61%	2413.28	2428.93	0.92%	0.92%	<div><div></div></div>	-0.64%
Engineering	106.88	80.70	0.21	0.15	<div><div></div></div>	32.44%	16586.70	16676.70	6.32%	6.34%	<div><div></div></div>	-0.54%
Food & Allied Product	24.07	14.68	0.05	0.03	<div><div></div></div>	63.91%	22575.38	22425.08	8.60%	8.53%	<div><div></div></div>	0.67%
Insurance	8.55	15.96	0.02	0.03	<div><div></div></div>	-46.40%	6719.35	6748.98	2.56%	2.57%	<div><div></div></div>	-0.44%
IT	22.92	8.47	0.04	0.02	<div><div></div></div>	170.75%	973.83	945.96	0.37%	0.36%	<div><div></div></div>	2.95%
Jute	1.29	1.46	0.00	0.00	<div><div></div></div>	-11.43%	103.22	104.43	0.04%	0.04%	<div><div></div></div>	-1.16%
Miscellaneous	54.79	50.66	0.11	0.10	<div><div></div></div>	8.14%	9359.22	9291.49	3.57%	3.53%	<div><div></div></div>	0.73%
Mutual Fund	7.49	17.30	0.01	0.03	<div><div></div></div>	-56.67%	4046.85	4063.63	1.54%	1.54%	<div><div></div></div>	-0.41%
NBFI	39.64	55.54	0.08	0.11	<div><div></div></div>	-28.63%	8670.02	8779.61	3.30%	3.34%	<div><div></div></div>	-1.25%
Paper & Printing	0.51	0.51	0.00	0.00	<div><div></div></div>	-1.28%	163.09	164.99	0.06%	0.06%	<div><div></div></div>	-1.15%
harmaceuticals & Chemicals	50.38	61.05	0.10	0.12	<div><div></div></div>	-17.49%	43787.02	43798.15	16.68%	16.65%	<div><div></div></div>	-0.03%
Power & Energy	45.60	62.01	0.09	0.12	<div><div></div></div>	-26.46%	36223.09	36220.38	13.80%	13.77%	<div><div></div></div>	0.01%
Service & Real Estate	5.91	5.30	0.01	0.01	<div><div></div></div>	11.46%	1640.84	1642.48	0.63%	0.62%	<div><div></div></div>	-0.10%
Tannery	3.64	5.56	0.01	0.01	<div><div></div></div>	-34.54%	2266.97	2291.93	0.86%	0.87%	<div><div></div></div>	-1.09%
Telecommunication	25.50	17.81	0.05	0.03	<div><div></div></div>	43.19%	38254.00	38510.86	14.57%	14.64%	<div><div></div></div>	-0.67%
Textile	50.46	62.04	0.10	0.12	<div><div></div></div>	-18.67%	7766.78	7808.18	2.96%	2.97%	<div><div></div></div>	-0.53%
Travel & Leisure	11.71	4.24	0.02	0.01	<div><div></div></div>	176.10%	1876.63	1853.19	0.71%	0.70%	<div><div></div></div>	1.26%

MC= Market Capitalization, %  $\Delta$  in Turnover= change in turnover from last day, %  $\Delta$  in MC= change in Market cap from last day

Index Movers	Index Shakers	Sector wise P/E (Fd.)			
OLYMPIC	GP	Bank	9.83	NBFI	15.06
BEXIMCO	BRACBANK	Cement	35.47	Paper & Printing	123.49
LAFSURCEML	BANKASIA	Ceramics	40.03	Pharmaceuticals & Chemicals	24.56
SPCL	SQURPHARMA	Engineering	34.12	Power & Energy	17.96
TITASGAS	UPGDCL	Food & Allied Product	24.83	Service & Real Estate	25.19
BXPHARMA	ISLAMIBANK	Insurance	12.07	Tannery	26.44
MPETROLEUM	RENATA	IT	44.69	Telecommunication	22.85
ACMELAB	NHFIL	Jute	524.92	Textile	16.92
ITC	SINGERBD	Miscellaneous	18.60	Travel & Leisure	18.60
NATLIFEINS	YPL				

## Important News

### Company News:

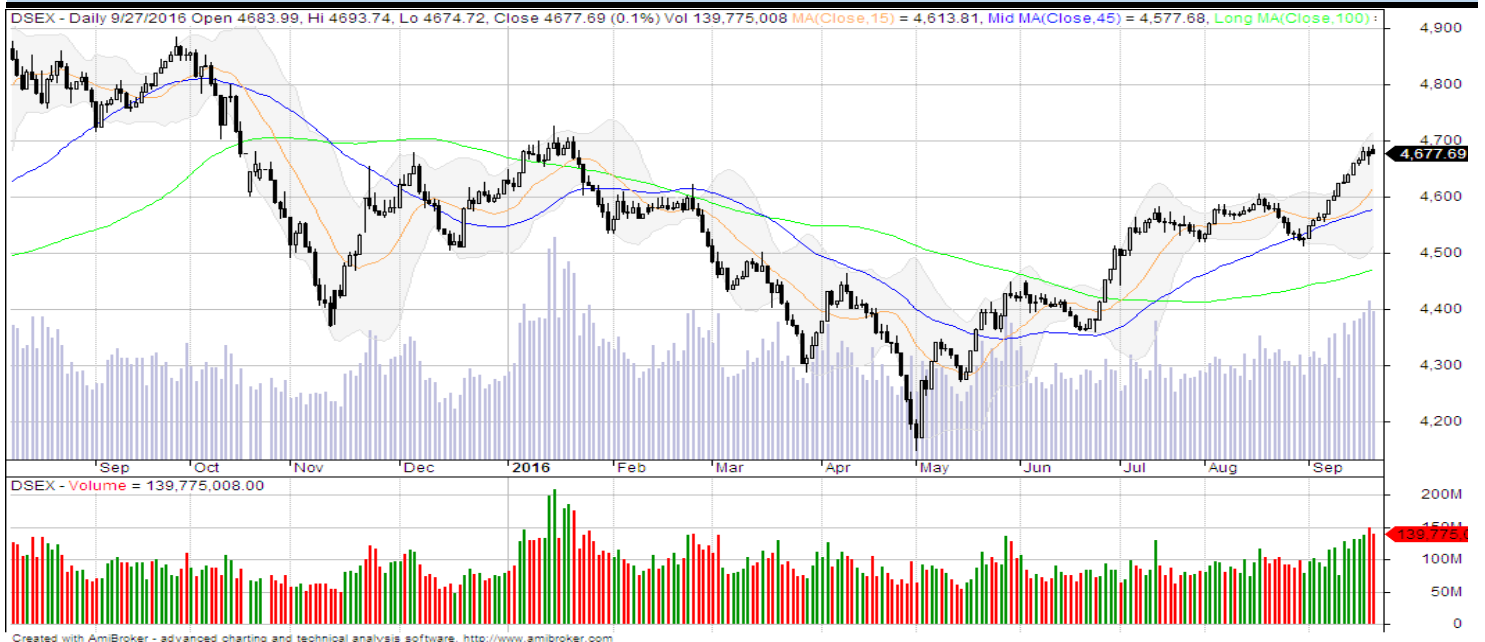
**KDSALTD:Starting of commercial production of new packaging line(additional info):** With reference to their earlier news disseminated by DSE on September 25, 2016, regarding Starting of commercial production of new packaging line, the Company has further informed that after commercial production of new packaging line, if the full capacity can be produced and sold then it may generate additional sales revenue of USD 13.00 million (approximately) per year.

## Recent Dividend Declaration

Ticker	Dividend	Record Date
United Power Generation and Distribution Company Limited	45%Cash Final	10.10.2016
Navana CNG Limited	15%C	10.10.2016
Eastern Housing Limited	15% C & 5%B	05.10.2016
Delta Brac Housing Finance Corporation Ltd.	30% C & 5%B	29.09.2016

Note: C= cash Dividend, B= Bonus Dividend, R=Right, N/A=NotApplicable

## DSEX Technical Graph for last one year



## MTB CAPITAL LIMITED

Corporate head office

Level: 3, MTB Tower, 111, Kazi Nazrul Islam Avenue, Dhaka

Phone: 8321714, Fax: 8321543

[www.mtbcap.com](http://www.mtbcap.com)

*A Mutual Trust Bank Company*

*you can invest with us*

## Disclaimer

This report has been prepared by the MTB Capital Limited (MTBCL) on the basis of available information in the market and it is provided for the purposes only. It is not to be used as an offer for buying or selling any instruments. If anyone takes any action relying on this information, shall be responsible solely by him/her self for any consequences. The best care has been taken to make the report informative. MTBCL doesn't give any warrant or guarantee that the report or such information is fully accurate. The information that are provided here is the exclusive property of MTBCL and can not be distributed without prior consent of MTBCL.