

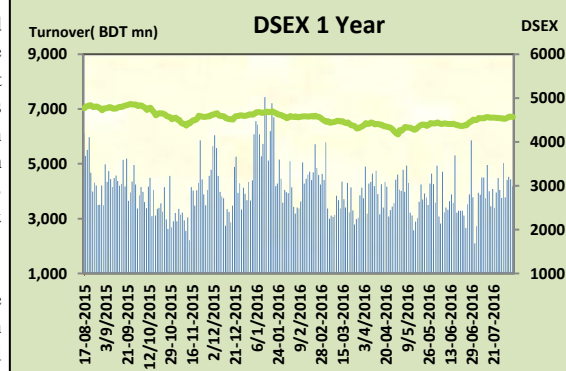
# Today's Market Overview

Sunday, August 07, 2016

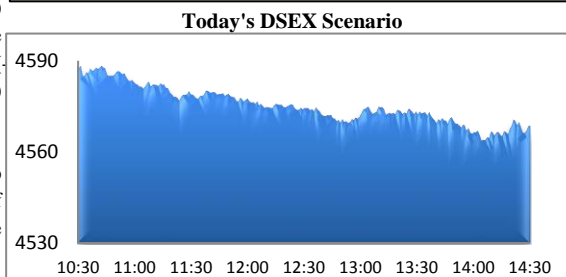


<b>DSEX</b>	<b>4,568.43</b>	<b>-0.20%</b>	<b>Issues Traded</b>	<b>Advanced</b>	<b>Declined</b>	<b>Unchanged</b>
<b>Turnover (BDT mn)</b>	<b>4,182.75</b>	<b>-5.55%</b>		<b>105</b>	<b>163</b>	<b>57</b>

After four days of upturn market observed slight downfall with a slightly declined turnover. The premier bourse of the nation opened with normal mood and continued plunging till the end. Market haven't found any strong recovery stance during the whole session. Investors were busy in picking quick gain from the major sectors. Some major sectors like Bank, Power & Pharmaceuticals observed marginal correction but Cement, Engineering & Telecom somehow keep the positive momentum. Almost all of the sectors observed offloading tendency as investors found slight downfall in big cap stocks. Major concentration occurred in Pharmaceuticals & Service but some small cap stocks observed positive movement. 4 billion above turnover somehow motivated investors to remain in the market. Other two indices DS30 & DSES the shariah based index performed marginally poor. Jute was the best gainer followed by Paper & Cement while IT was the worst loser followed by NBFI Insurance.



The general gauge DSEX ended at 4568.43 with a decline of -0.20% which declined 9.15 points from the broad DSEX. The Turnover declined slightly by -5.55% which was only 246 Million BDT poorer than that of previous day and finally finished the mark at 4182.75 million BDT. A total of 105 issues advanced with 163 declined & 57 remained unchanged. Sectors that improved were: Cement (+0.75%) Engineering (+0.61%) Food (+0.40%) Jute (+8.97%) Miscellaneous (+0.65%) Paper (+2.64%) Service (+0.74%) Tannery (+0.19%) Telecom (+0.22%) & Sectors that declined were: Bank (-0.40%) Ceramics (-0.83%) Insurance (-1.04%) IT (-1.59%) NBFI (-1.04%) Pharmaceuticals (-0.26%) Power (-0.25%) Textiles (-0.11%) Travel (-1.14%)



TITASGAS topped in the Volume chart with a turnover of 20.07 BDT crore. SHYAMPSUG ranked top in gainer chart with a price hike of +10.0% and BDAUTOCAR topped in the loser chart with a decline of -5.3 % from its prevailing price. LAFSURCEML led the way in the index mover chart while ISLAMIBANK played the shatter part.

Index Scenario				Market Highlights				
INDEX		Change	% Changes	DSEX 52 week H/L		4874/3960	Market P/E (LTM)	14.84
DSEX	4568.43	(9.15)	-0.20%	DSEX Week H/L		4576/4525	M.Cap	3228681.3
				Group Performances				
DSES	1122.23	(0.81)	-0.07%	Category	Mkt Cap (mn.)	Δ % M.Cap	Turnover BDT (mn)	Δ % Turnover
DS30	1789.29	(5.91)	-0.33%	Group A	2,474,568.47	0.0%	3,647.96	-6.9%
Turnover Scenario				Group B	10,666.47	0.9%	78.96	4.5%
Today's Turnover (mn.)		Change In BDT (mn.)	% Change	Group N	64,343.19	-3.6%	260.80	14.4%
4182.75		(246)	-5.55%	Group Z	38,397.58	-1.0%	45.07	-29.8%

Top Ten Volume (in BDT. crore)											
Stock	TT	YT	AT	% Δ in Turnover	TT/AT	CP	YP	% Δ P	Number of shares	Public Holding	
TITASGAS	20.07	29.81	8.60	<div><div></div></div> -32.7%	133.4%	50.9	52.3	<div><div></div></div> -2.7%	274,244,180.0	9%	
LAFSURCEML	14.81	12.89	7.43	<div><div></div></div> 14.9%	99.4%	77.4	76.3	<div><div></div></div> 1.4%	362,944,698.6	5%	
MJLBD	12.88	11.23	11.96	<div><div></div></div> 14.6%	7.7%	108.1	107.4	<div><div></div></div> 0.7%	15,218,280.0	19%	
BSC	12.20	10.96	4.14	<div><div></div></div> 11.3%	194.3%	447.3	421.5	<div><div></div></div> 6.1%	341,775,000.0	13%	
BSCCL	11.33	17.04	3.91	<div><div></div></div> -33.5%	189.4%	115.1	115.7	<div><div></div></div> -0.5%	190,686,141.8	9%	
ACMELAB	10.86	8.59	15.62	<div><div></div></div> 26.5%	-30.4%	111.5	112.9	<div><div></div></div> -1.2%	276,739,950.1	61%	
BXPHERMA	10.14	4.42	8.30	<div><div></div></div> 129.2%	22.1%	86.1	86.5	<div><div></div></div> -0.5%	137,132,037.0	19%	
NLTUBES	10.05	5.51	4.02	<div><div></div></div> 82.4%	150.2%	117.2	112.3	<div><div></div></div> 4.4%	190,417,988.2	27%	
GP	9.54	5.29	8.71	<div><div></div></div> 80.5%	9.5%	275	274.3	<div><div></div></div> 0.3%	294,400,000.0	24%	
UTTARABANK	9.26	6.52	2.16	<div><div></div></div> 42.1%	328.8%	23.9	24.1	<div><div></div></div> -0.8%	54,285,000.0	38%	

TT= Today's Turnover in crore, YT= Yesterday's Turnover in Crore, AT= Average of Last 20 day's Turnover, CP= Current Price, YP= Yesterday's Price, % Δ P= percentage change in price

Top Ten Gainer						Top Ten Loser					
Stock	CP	YP	AP	% Δ P	% Δ in P from AP	Stock	CP	YP	AP	% Δ P	% Δ in P from AP
SHYAMPSUG	12.1	11	8.285	10.0%	46.0%	BDAUTOCA	37.40	39.50	36.50	-5.3%	2.5%
SONALIANSH	165.7	150.7	134.5	10.0%	23.2%	ICBSONALI1	6.00	6.30	6.33	-4.8%	-5.2%
USMANIAGL	113	102.8	88.58	9.9%	27.6%	RELIANCE1	8.20	8.60	8.21	-4.7%	-0.1%
MEGHNAPET	6.7	6.1	5.215	9.8%	28.5%	KDSALTD	58.00	60.70	59.28	-4.4%	-2.2%
ECABLES	194.9	177.7	162.05	9.7%	20.3%	PLFSL	6.50	6.80	8.33	-4.4%	-22.0%
NORTHERN	25.1	321.6	263.745	-92.2%	-90.5%	MODERNDYE	155.70	162.10	155.02	-3.9%	0.4%
CVOPRL	258.3	237.6	257.39	8.7%	0.4%	ZAHEENSPIN	17.20	17.90	16.31	-3.9%	5.5%
SAMORITA	81.9	75.8	73.595	8.0%	11.3%	1JANATAMF	5.10	5.30	5.25	-3.8%	-2.8%
RENWICKJA	801.7	745.8	463.58	7.5%	72.9%	DBH1STMF	6.10	6.30	5.98	-3.2%	2.0%
LIBRAINFU	744.4	692.5	640.95	7.5%	16.1%	ISLAMIBANK	31.40	32.40	32.39	-3.1%	-3.1%

AP= Average Price of last 20 day, %  $\Delta$  in P from AP= percentage change in price from the 20-day average price

**Industry /Sectors overview (Amounts in BDT. Crore)**

Sector	Trade Volume		MKT Turnover %		% Δ in Turnover	Market Capitalization		% of Total MC		% Δ in MC	
	Today	Yesterday	Today	Yesterday		Today	Yesterday	Today	Yesterday		
Bank	36.78	36.17	0.09	0.08		1.70%	41487.41	41655.85	16.05%	16.11%	-0.40%
Cement	24.70	33.85	0.06	0.08	🔴	-27.02%	15017.68	14905.84	5.81%	5.76%	0.75%
Ceramics	2.82	2.27	0.01	0.01	🟢	24.42%	2331.40	2350.82	0.90%	0.91%	🔴 -0.83%
Engineering	69.35	69.57	0.17	0.16		-0.32%	15657.05	15562.55	6.06%	6.02%	0.61%
Food & Allied Product	14.96	17.28	0.04	0.04	🔴	-13.41%	23941.02	23846.71	9.26%	9.22%	0.40%
Insurance	4.01	4.37	0.01	0.01	🔴	-8.28%	6543.07	6611.98	2.53%	2.56%	🔴 -1.04%
IT	4.53	7.51	0.01	0.02	🔴	-39.66%	888.37	902.74	0.34%	0.35%	🔴 -1.59%
Jute	3.11	3.66	0.01	0.01	🔴	-15.02%	119.41	109.58	0.05%	0.04%	🟢 8.97%
Miscellaneous	36.23	34.44	0.09	0.08		5.21%	8565.17	8509.68	3.31%	3.29%	0.65%
Mutual Fund	4.64	5.74	0.01	0.01	🔴	-19.25%	3966.75	4000.26	1.53%	1.55%	🔴 -0.84%
NBFI	19.29	25.22	0.05	0.06	🔴	-23.53%	7837.29	7919.40	3.03%	3.06%	🔴 -1.04%
Paper & Printing	1.19	1.06	0.00	0.00	🟢	12.03%	162.34	158.16	0.06%	0.06%	🟢 2.64%
harmaceuticals & Chemicals	53.58	49.15	0.13	0.11	🟢	9.00%	44440.64	44556.05	17.19%	17.23%	-0.26%
Power & Energy	68.98	75.61	0.17	0.18	🔴	-8.77%	35427.19	35517.04	13.71%	13.73%	-0.25%
Service & Real Estate	9.38	4.05	0.02	0.01		131.35%	1537.06	1525.77	0.59%	0.59%	🟢 0.74%
Tannery	3.61	3.29	0.01	0.01	🟢	9.70%	2306.30	2302.02	0.89%	0.89%	0.19%
Telecommunication	20.86	22.33	0.05	0.05	🔴	-6.54%	39031.31	38946.69	15.10%	15.06%	0.22%
Textile	28.69	30.19	0.07	0.07	🔴	-4.98%	7382.74	7390.94	2.86%	2.86%	-0.11%
Travel & Leisure	1.85	2.37	0.00	0.01	🔴	-21.85%	1829.37	1850.40	0.71%	0.72%	🔴 -1.14%

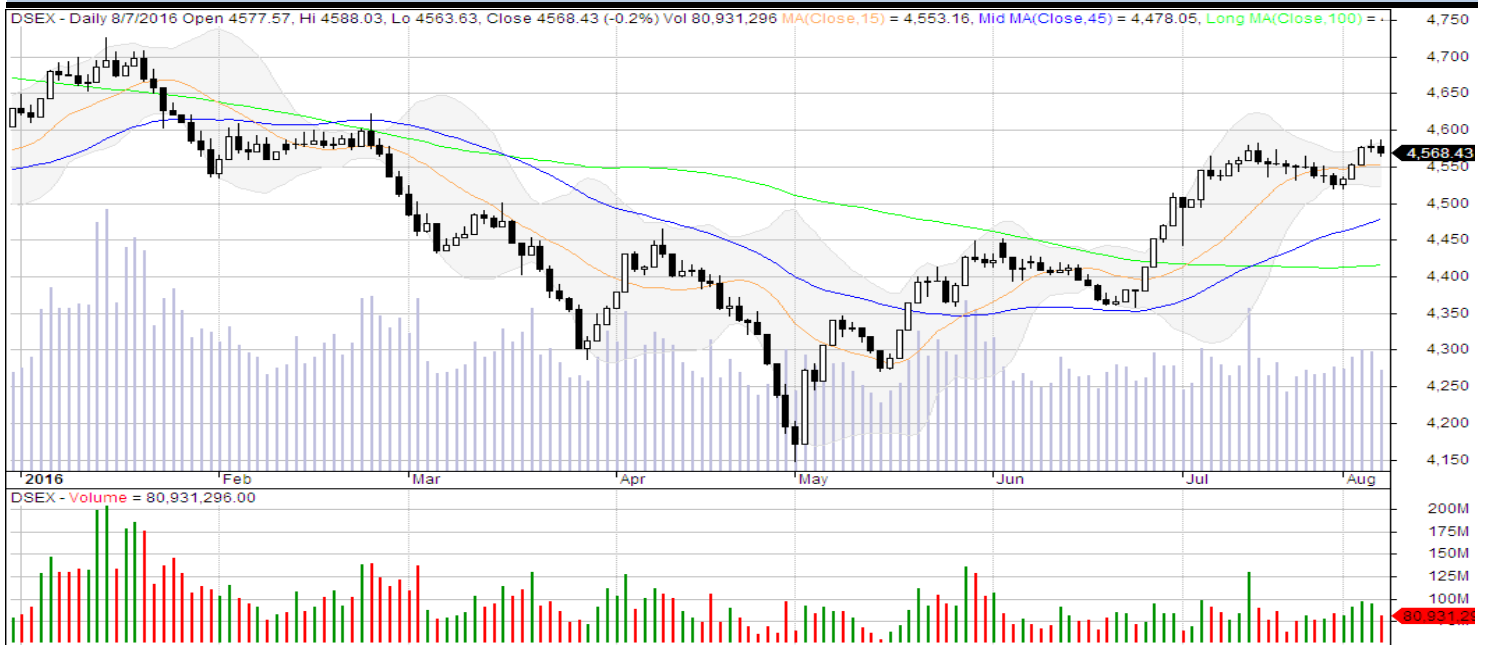
MC= Market Capitalization, %  $\Delta$  in Turnover= change in turnover from last day, %  $\Delta$  in MC= change in Market cap from last day

Index Movers	Index Shakers	Sector wise P/E (Fd.)			
LAFSURCEML	ISLAMIBANK	Bank	9.22	NBFI	13.97
GP	TITASGAS	Cement	34.91	Paper & Printing	133.43
BATBC	BRACBANK	Ceramics	38.96	Pharmaceuticals & Chemicals	26.16
DUTCHBANGL	RENATA	Engineering	38.42	Power & Energy	17.17
CVOPRL	DESCO	Food & Allied Product	26.75	Service & Real Estate	24.68
ECABLES	SQURPHARMA	Insurance	10.91	Tannery	38.62
BSC	NATLIFEINS	IT	40.03	Telecommunication	25.27
SPCL	RAKCERAMIC	Jute	666.11	Textile	16.31
PRIMEBANK	AB BANK	Miscellaneous	17.93	Travel & Leisure	19.81
POWERGRID	UPGDCL				

**Important News****Company News:****Recent Dividend Declaration**

Ticker	Dividend	Record Date
Prime Islami Life Insurance Ltd	20% C & 5% B	8/8/2016
Grameenphone Limited	85% (interim cash)	08.08.2016
Sandhani Life Insurance Co. Limited	25% B	14.08.2016
Fareast Islami Life Insurance Co. Limited	39% C	07.08.2016

Note: C= cash Dividend, B= Bonus Dividend, R=Right, N/A=NotApplicable

**DSEX Technical Graph for last one year****MTB CAPITAL LIMITED****Corporate head office****Level: 3, MTB Tower, 111, Kazi Nazrul Islam Avenue, Dhaka****Phone: 8321714, Fax: 8321543**[www.mtbcap.com](http://www.mtbcap.com)*A Mutual Trust Bank Company**you can invest with us***Disclaimer**

This report has been prepared by the MTB Capital Limited (MTBCL) on the basis of available information in the market and it is provided for the purposes only. It is not to be used as an offer for buying or selling any instruments. If anyone takes any action relying on this information, shall be responsible solely by him/her self for any consequences. The best care has been taken to make the report informative. MTBCL doesn't give any warrant or guarantee that the report or such information is fully accurate. The information that are provided here is the exclusive property of MTBCL and can not be distributed without prior consent of MTBCL.